



Dell Latitude E4310 Display Replacement

This guide walks through how to remove and...

Written By: Aylin



INTRODUCTION

This guide walks through how to remove and replace a display on the Dell Latitude E4310 laptop in the event of a broken or bad display.

TOOLS:

Phillips #1 Screwdriver (1)

Metal Spudger (1)

Tweezers - Pro/ESD/Angled (1)

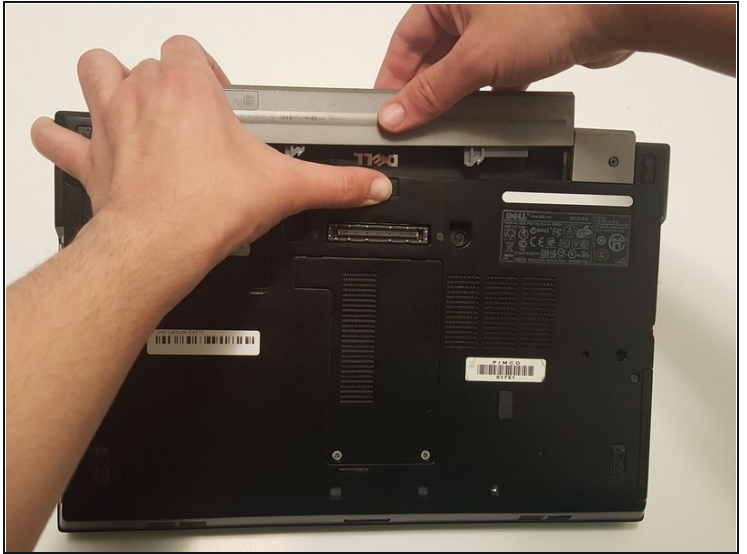
Phillips #0 Screwdriver (1)

Step 1 — Battery



- Power down the laptop and remove all power cords.

Step 2



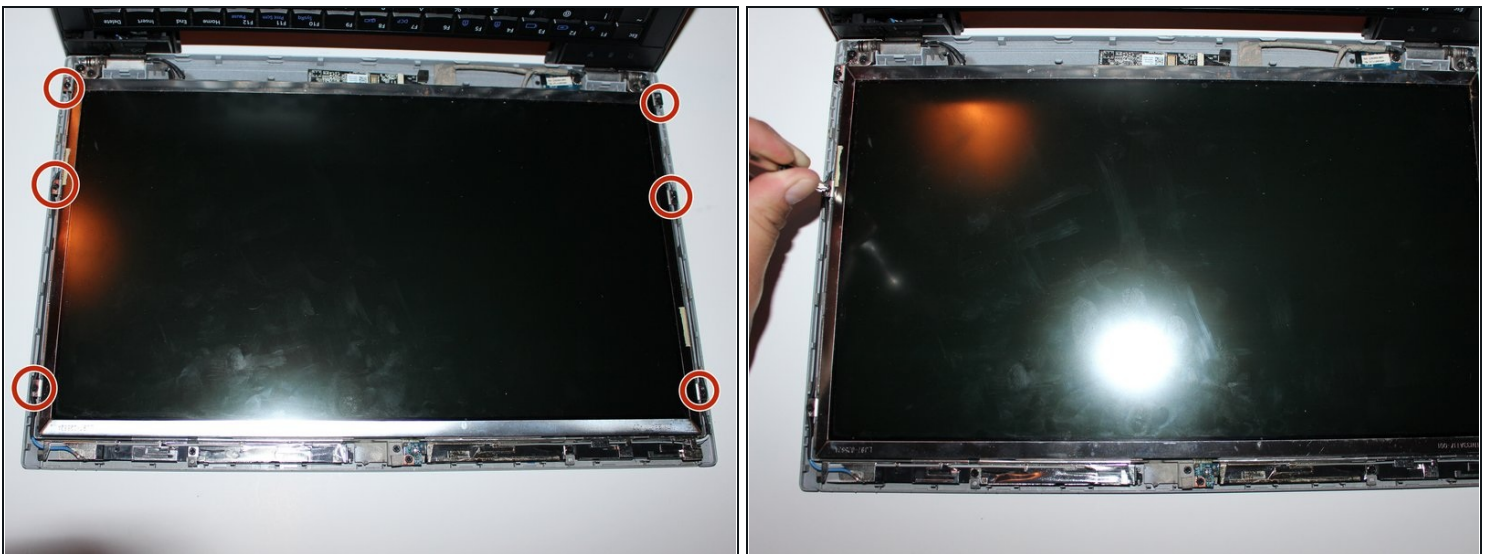
- Push in the battery release button with your thumb.
- Pull up on the battery to remove.

Step 3 — Display



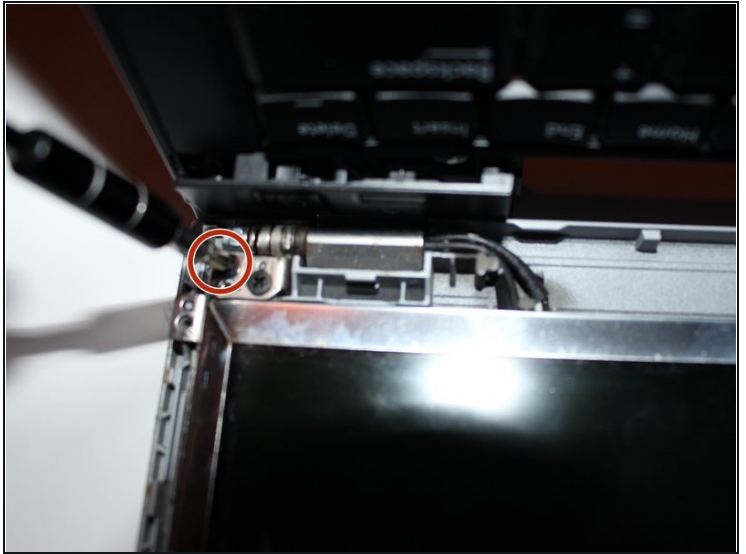
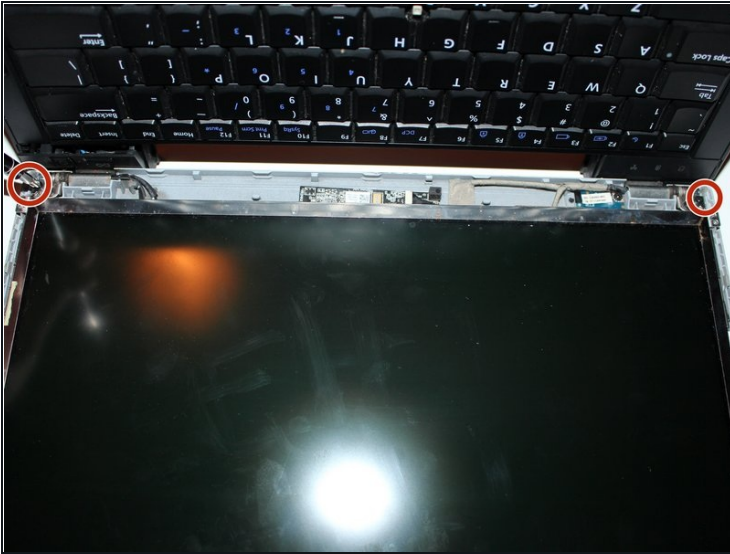
- Open up the laptop and flatten it down on a workable surface.
- Turn it around so that the screen is closest to you.
- Insert the flat end of a spudger, or plastic opening tool, into the groove between the screen bezel and top case.
- Twist the spudger, or plastic opening tool, until you hear a clicking sound and continue doing this around the entirety of the display.
- Remove the bezel.

Step 4



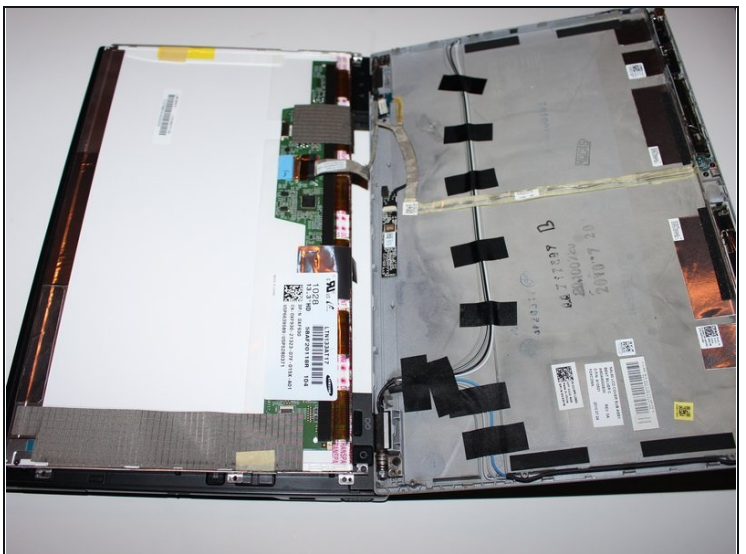
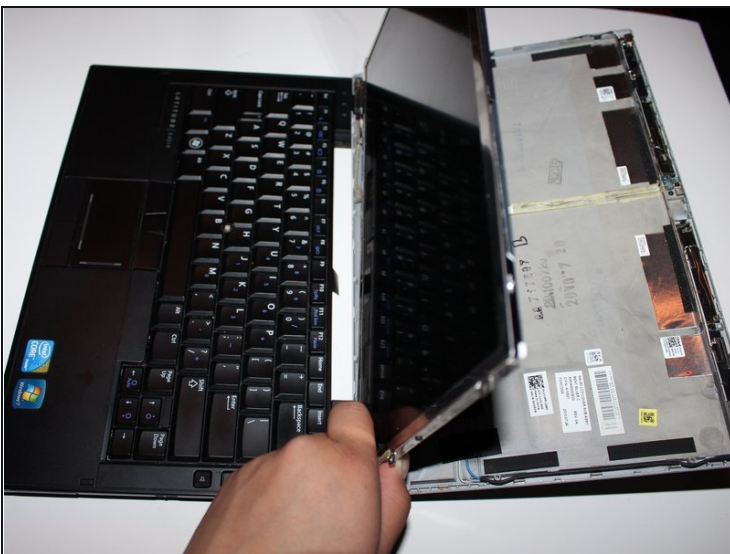
- Remove the six 0.3mm Phillips #1 screws.

Step 5



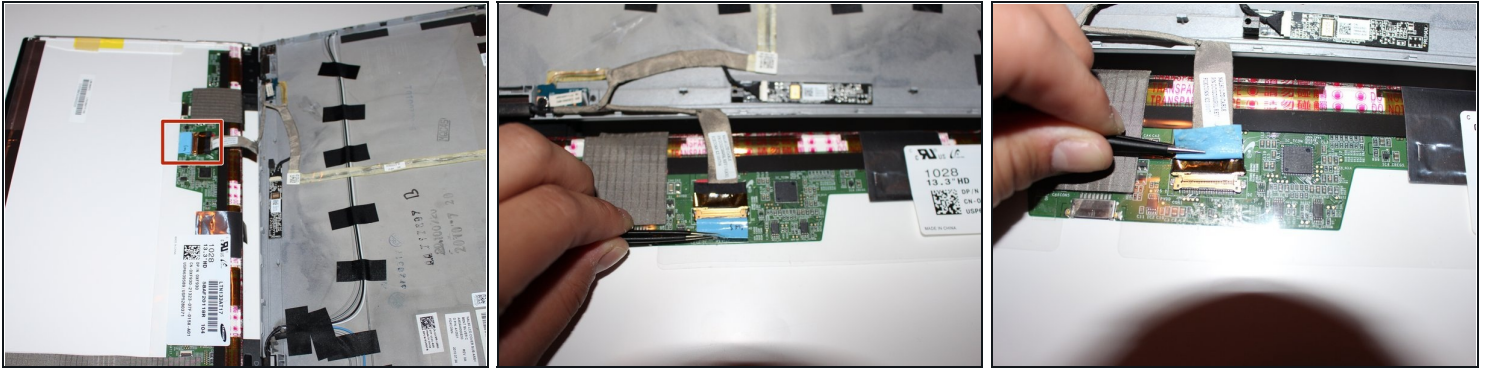
- Remove the two 0.5mm Phillips #1 screws.
- ① There are two screws located at each corner. **Only remove the ones closest to the outer edge.**

Step 6



- Carefully lift the screen up and flip it over onto the keyboard side as if you were turning the page of a book.

Step 7



- Use a pair of [tweezers](#) to flip the blue tape 180 degrees.
- ① By flipping the tape you disconnect the display connector.

Step 8



- Remove the screen from the laptop.

To reassemble your device, follow these instructions in reverse order.