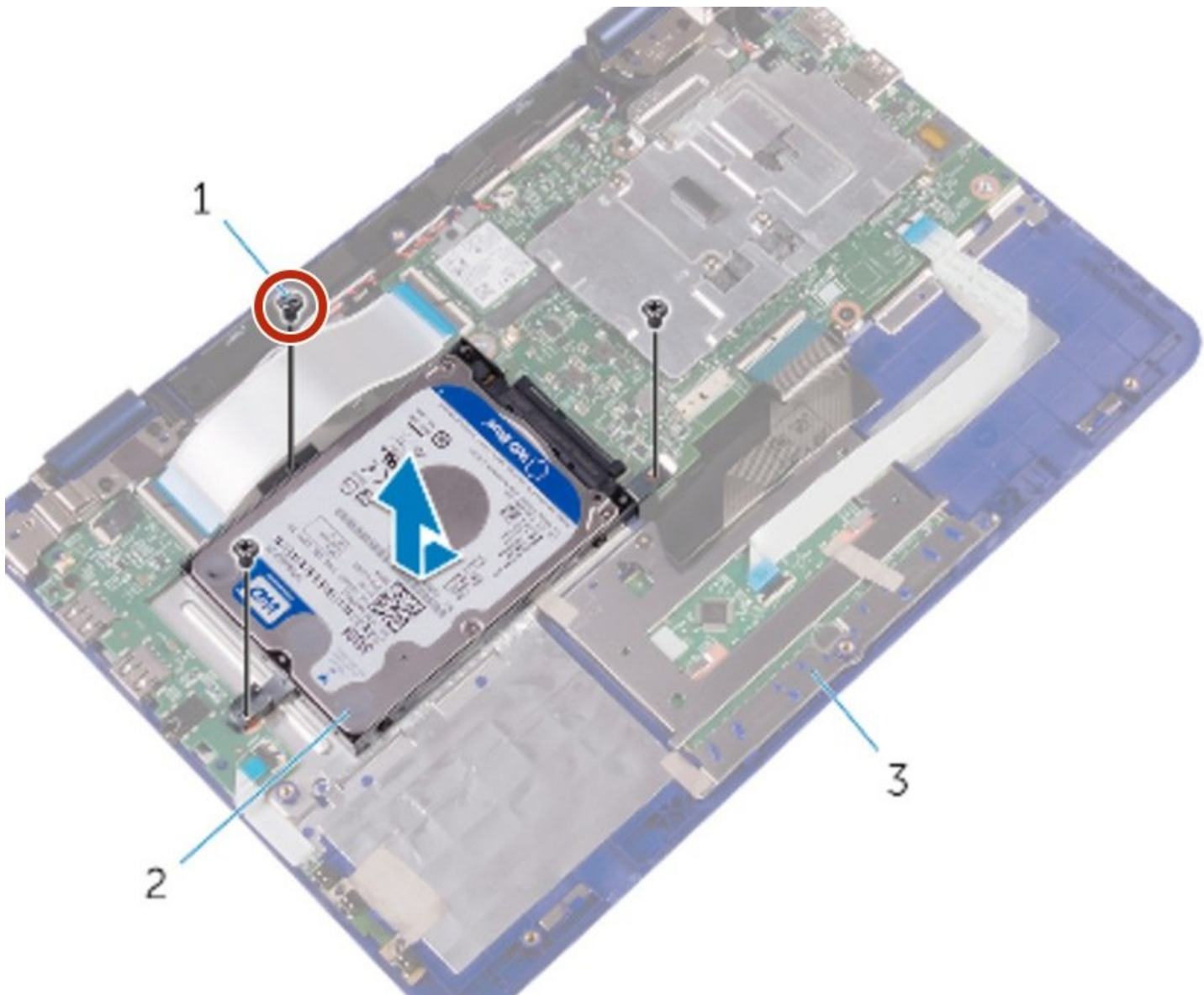




Dell Inspiron 11 3179 Hard Drive Replacement

Written By: Terrence15



INTRODUCTION

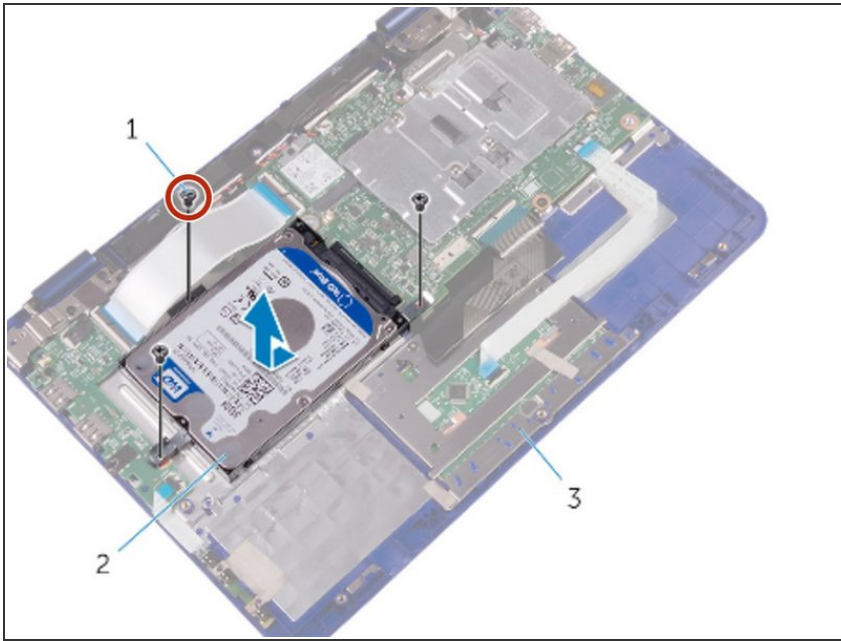
In this guide, we will show you how to remove and replace the Hard Drive.



TOOLS:

- [Phillips #0 Screwdriver](#) (1)
-

Step 1 — Remove the Screw



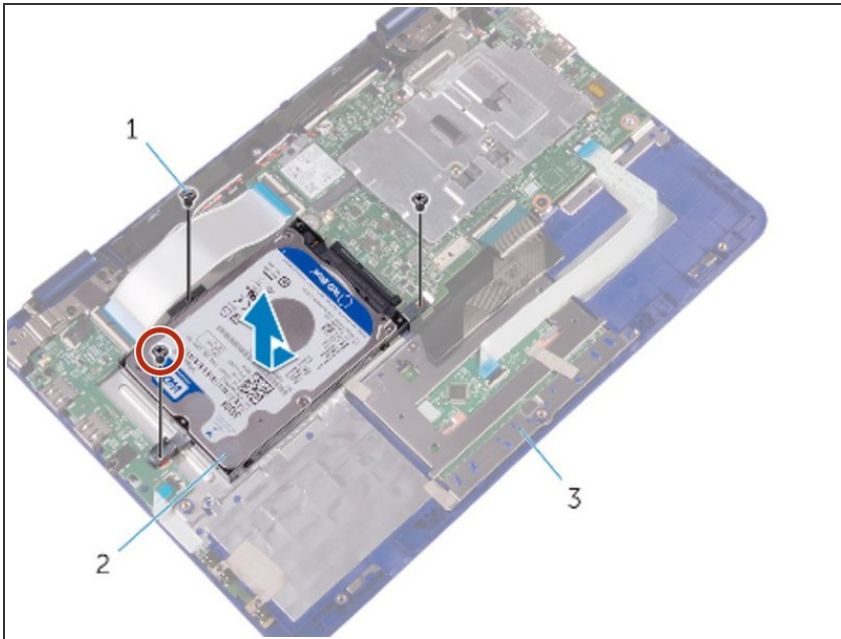
⚠ WARNING: Before working inside your computer, read the safety information that shipped with your computer and follow the steps in [Before working inside your computer](#). After working inside your computer, follow the instructions in [After working inside your computer](#).

⚠ CAUTION: Hard drives are fragile. Exercise care when handling the hard drive.

⚠ CAUTION: To avoid data loss, do not remove the hard drive while the computer is in sleep or on state.

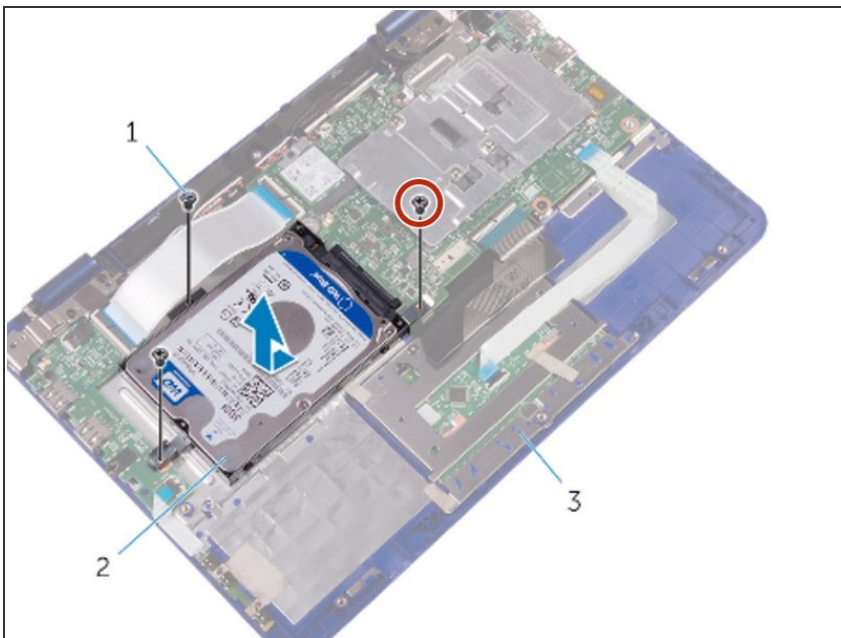
- Remove the screw that secures the hard-drive assembly to the palm-rest and keyboard assembly.

Step 2 — Remove the Screw



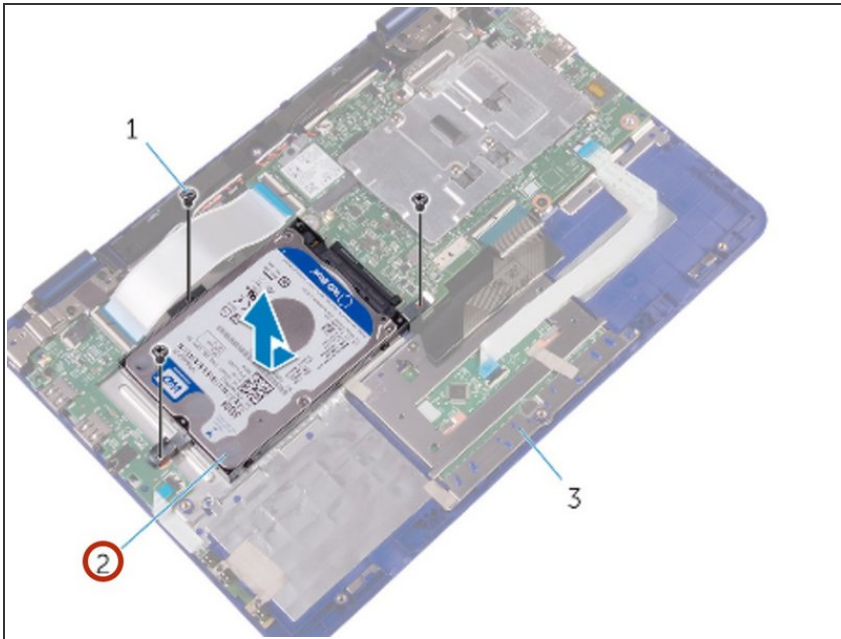
- Remove the screw that secures the hard-drive assembly to the system board.

Step 3 — Remove the Screw



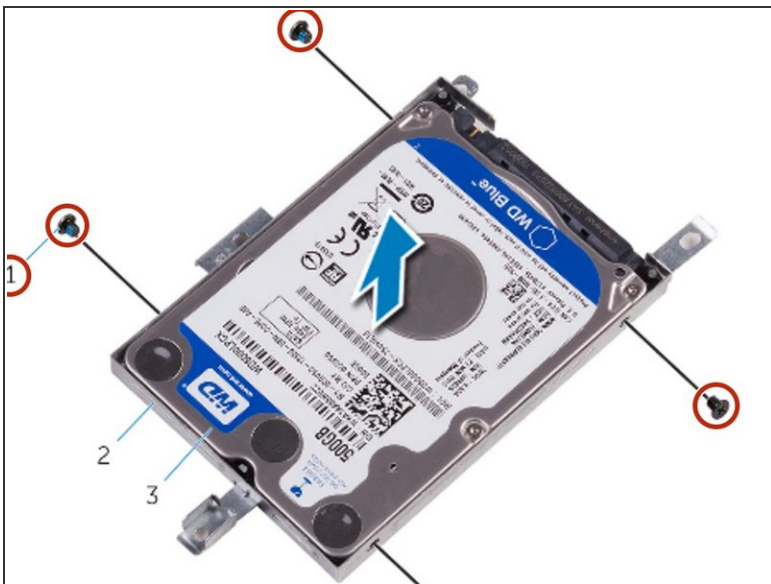
- Remove the screw that secures the hard-drive assembly to the I/O board.

Step 4 — Lifting the Hard-Drive Assembly



- Lift the hard-drive assembly off the palm-rest and keyboard assembly.

Step 5 — Remove the Screws



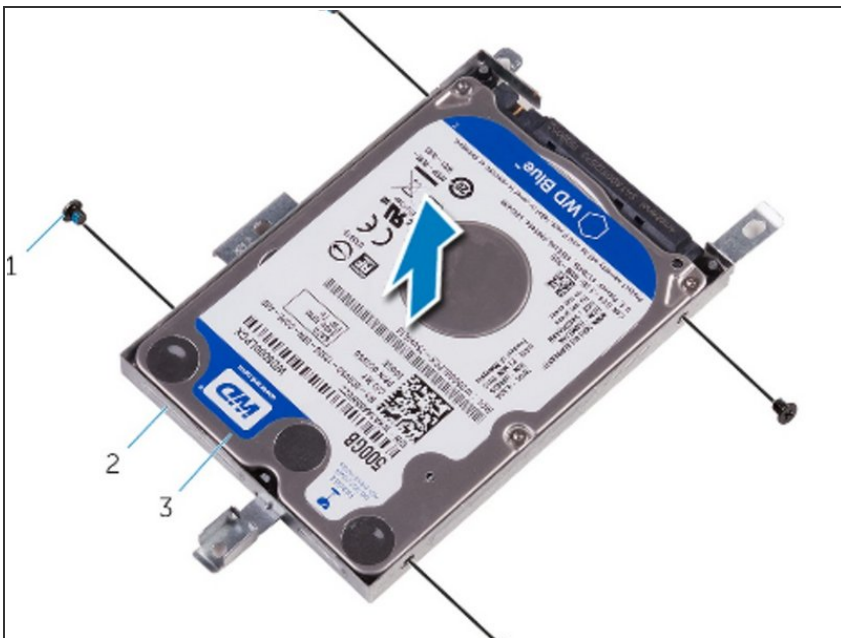
- Remove the screws that secure the hard-drive bracket to the hard drive.

Step 6 — Lifting the Hard Drive



- Lift the hard drive from the hard-drive bracket.

Step 7 — Aligning the Screw Holes



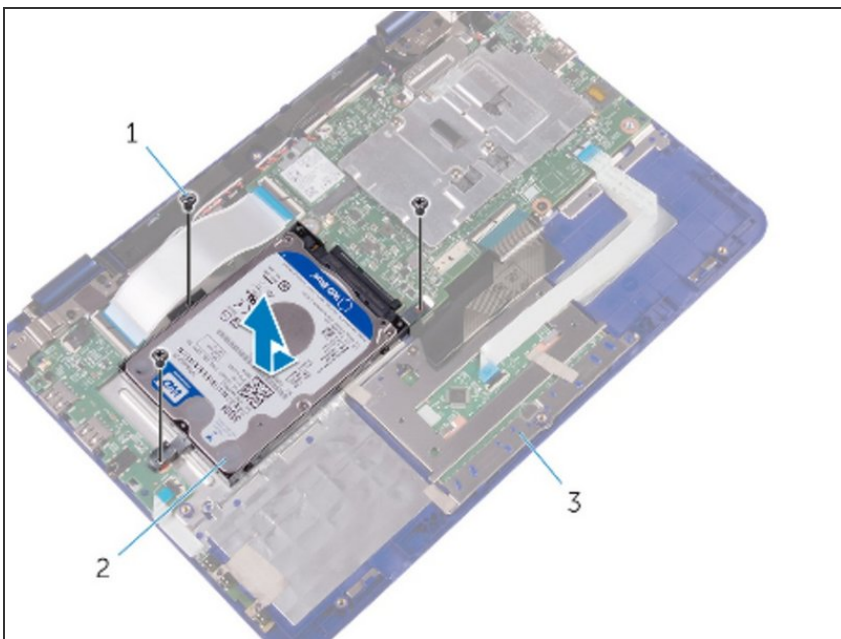
- Align the screw holes on the **NEW** hard drive with the screw holes on the hard-drive bracket.

Step 8 — Replace the Screws



- Replace the screws that secure the hard-drive bracket to the hard drive.

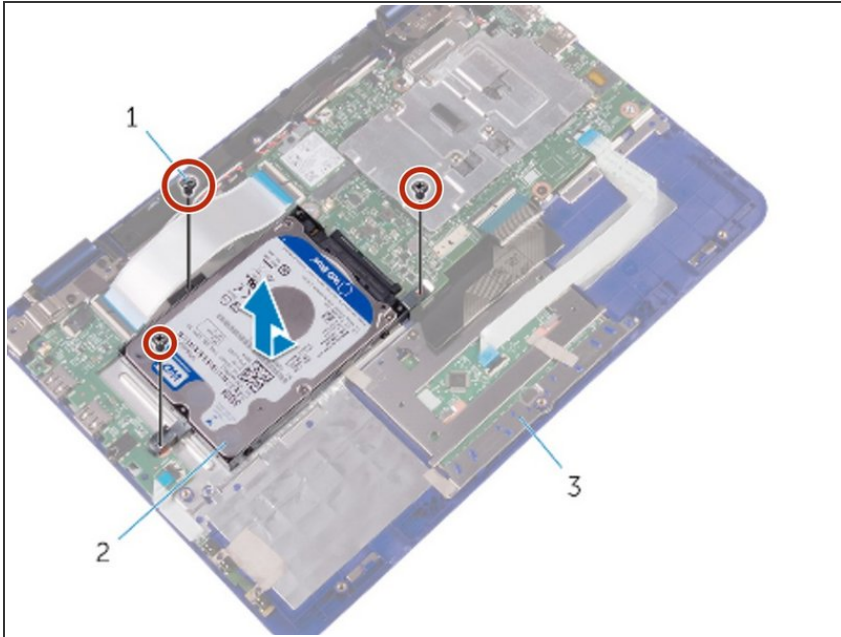
Step 9 — Align the Screw Holes



- Align the screw holes on the hard-drive assembly with the screw holes on the palm-rest and keyboard

assembly, system board and I/O board.

Step 10 — Replace the Screws



- Replace the screws that secure the hard-drive assembly to the palm-rest and keyboard assembly, system board and I/O board.

To reassemble your device, follow these instructions in reverse order.