



Zoom H6 Handy Recorder Power Switch Replacement

The power switch is located on the bottom, left...

Written By: Rachel Calder



INTRODUCTION

The power switch is located on the bottom, left side of the device. Connected to the switch is its circuit. When the switch doesn't work, it means that the circuit will have to be replaced. This will require the button board, as well as the motherboard, to be removed in order to reach the circuit.

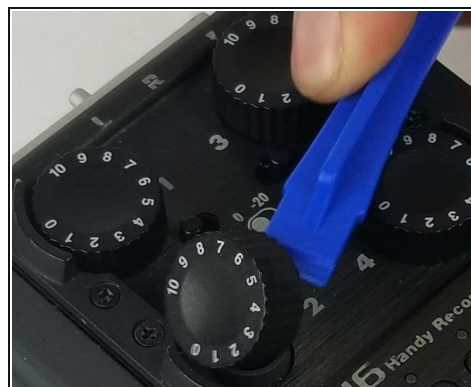
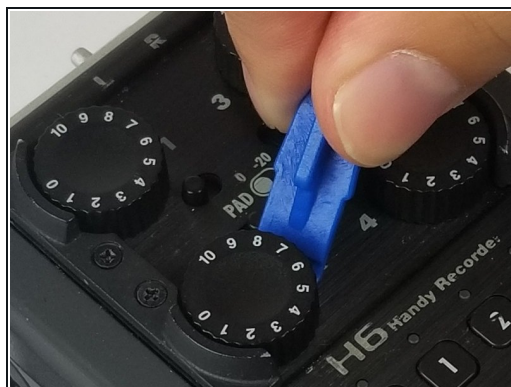
TOOLS:

[Outil pour ouvrir iFixit](#) (1)


[Tournevis cruciforme #1](#) (1)

[Pincettes de précision](#) (1)

Step 1 — Case



- Place device face up and pry off the four knobs using the flat end of the plastic opening tool.

 You may need to stabilize the device with the other hand.

Step 2



- With device facedown, lift the four rubber feet from the device using tweezers or fingernails.

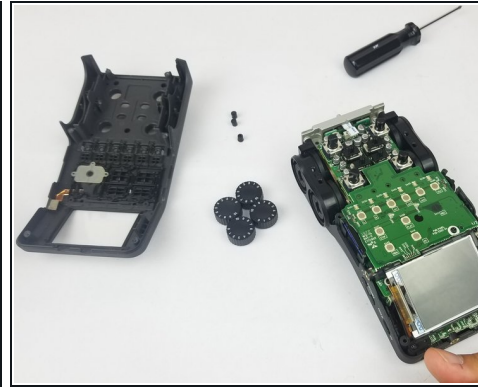
Step 3



- With device still facedown, unscrew six (PH #1), 9mm screws; two located in center of back side of device right above the battery cover, and four under the rubber feet.

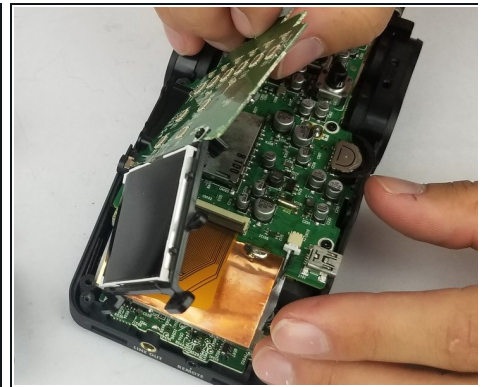
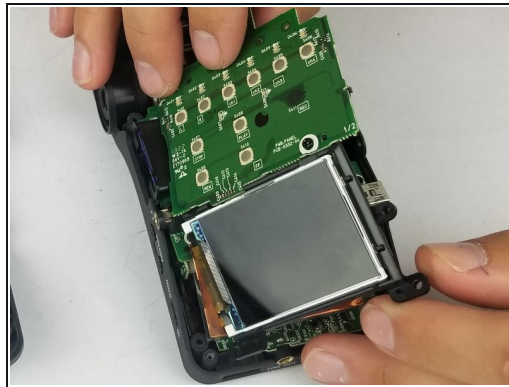
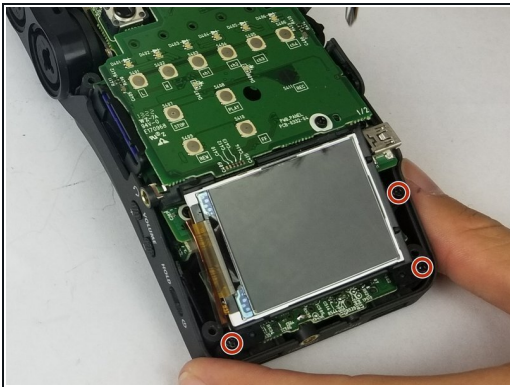
i An electronics screwdriver small enough to fit in hole (4mm diameter), but long enough to reach the screws (at least 2cm) will be required to unscrew the screws.

Step 4



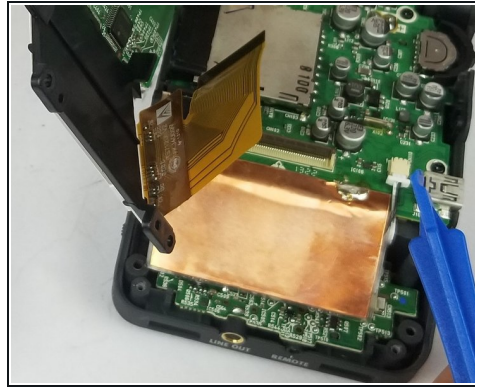
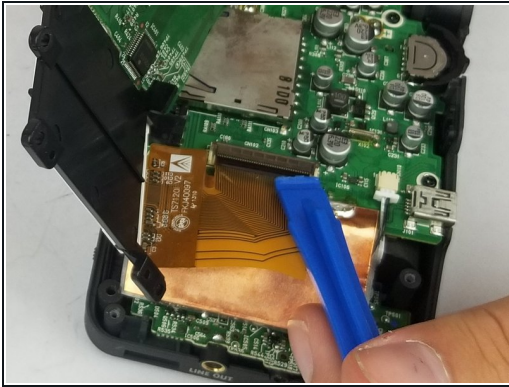
- With the bottom of the device on a table, lift the top of the device and gently place it aside.

Step 5 — Motherboard



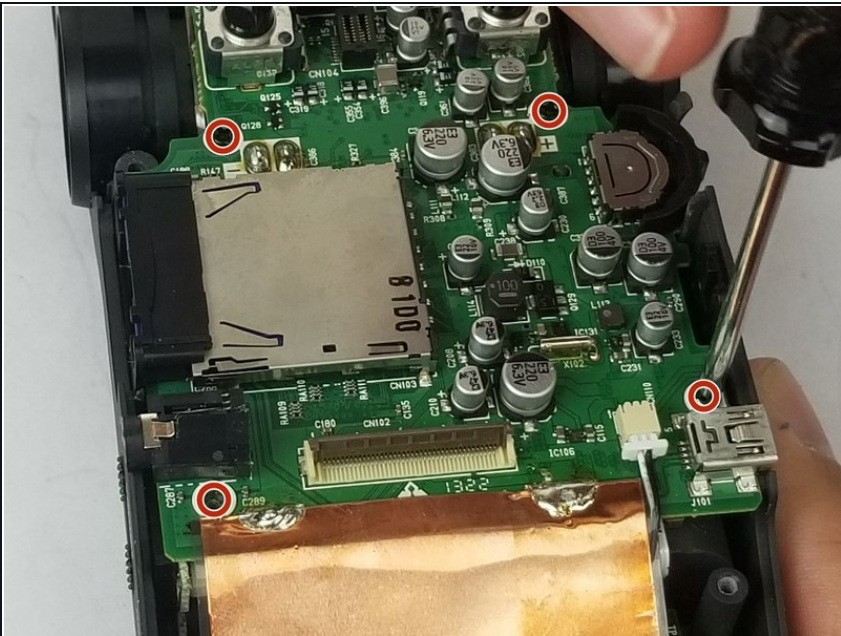
- Unscrew three (PH #1), 7mm screws from the display backing and gently flip over.

Step 6



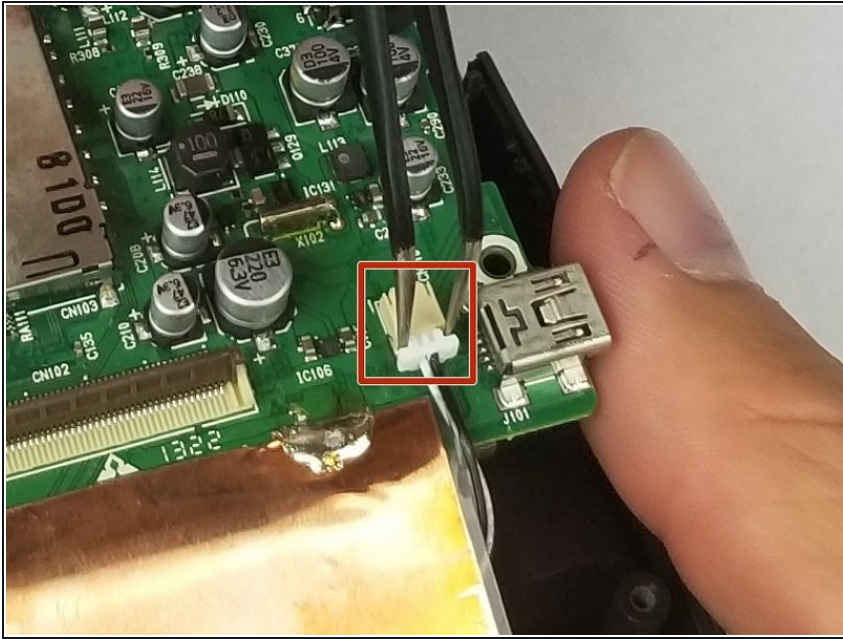
- Using a plastic opening tool, unlatch the clip and carefully unplug the ribbon connector from the device.
- Set the button board aside.

Step 7



- Unscrew four (PH #1), 8mm screws from the motherboard.

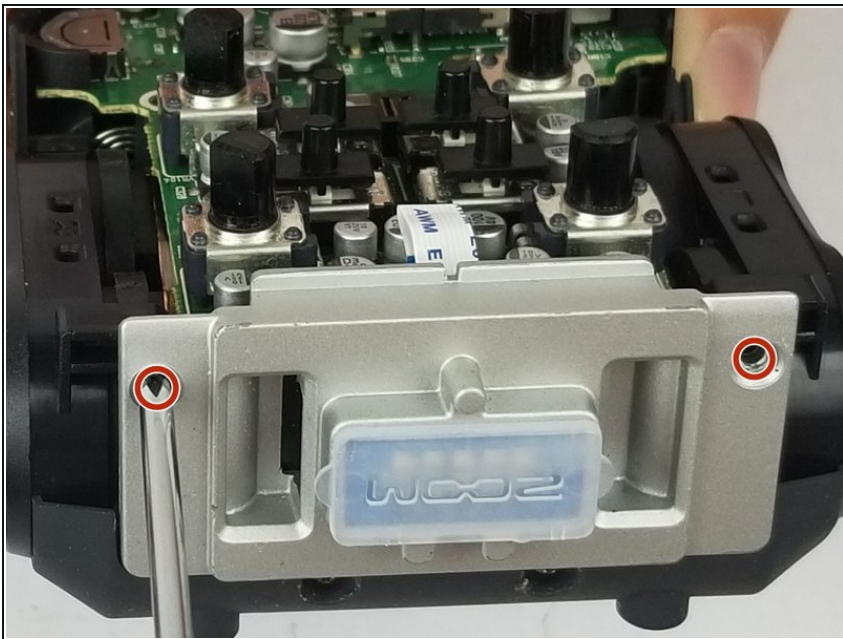
Step 8



- Disconnect wire from motherboard using tweezers.

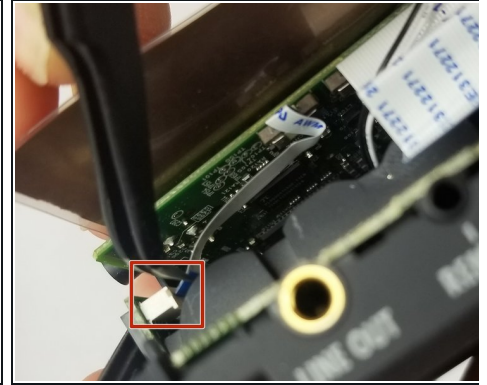
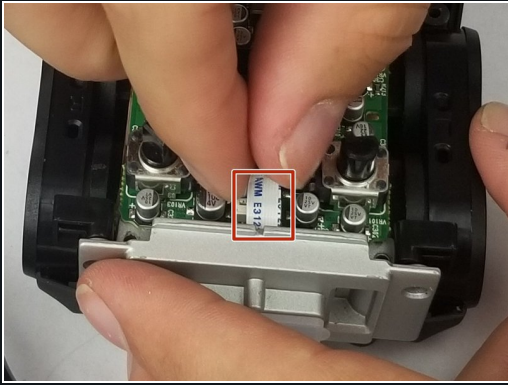
⚠ Do not touch the motherboard with metal tweezers. Only touch the plastic part of the plugged-in wire.

Step 9



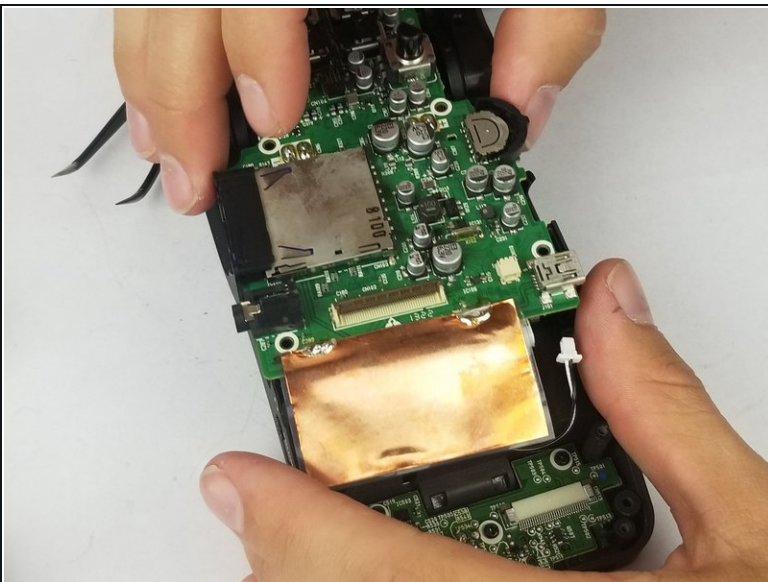
- Turn device 180 degrees to unscrew two (PH #1), 8mm screws from the mic connector.

Step 10



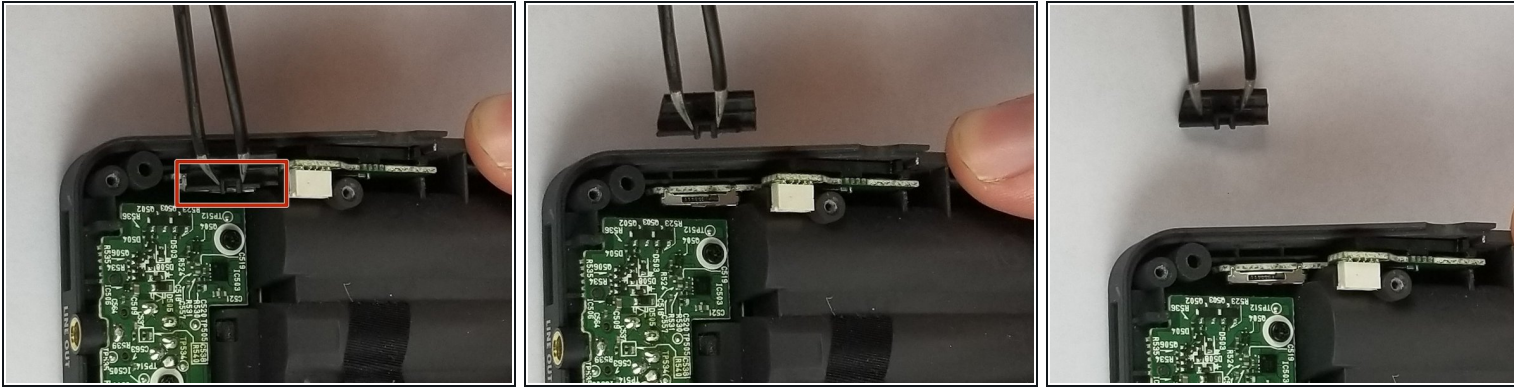
- Gently remove three ribbon connectors from the device.
 - The first is connected to the mic connector.
 - The second is connected to the base of the device, and the third is connected to the power switch on the side of the device; turn the device 180 degrees, and the connectors are near the top of the device next to the "LINE OUT" plug-in (directly behind the device display).
- i** It's best to use tweezers to remove the two ribbon connectors behind the display.
- !** Avoid touching anything but the ribbon connectors with the metal tweezers.

Step 11



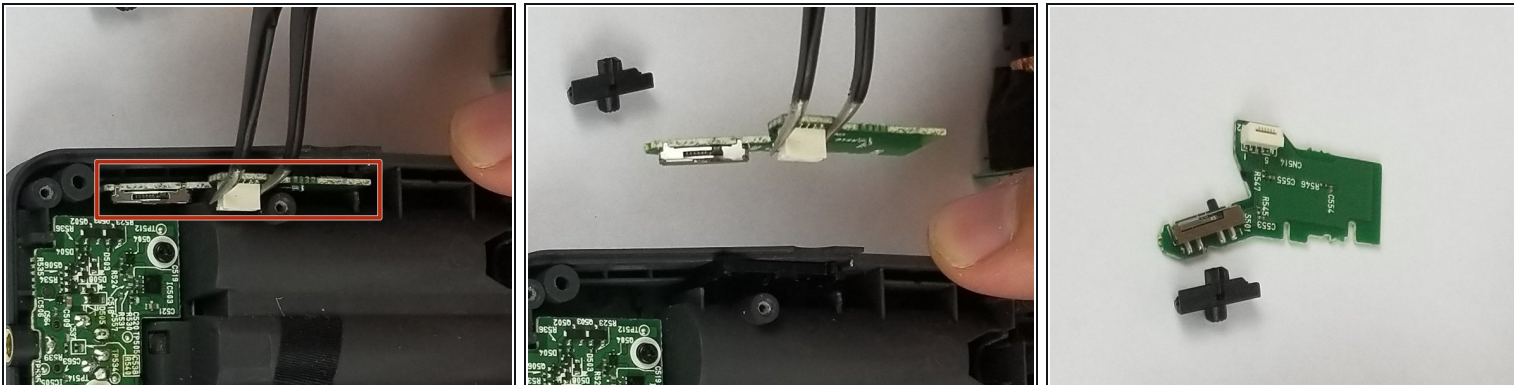
- Gently lift the motherboard from the base of the device and set aside.

Step 12 — Power Switch



- Use tweezers to lift the power switch out and set aside.

Step 13



- Use tweezers to lift power switch circuit out of device by the plastic ribbon connection.

- Replace the power switch circuit.

⚠ Don't touch the metal part of the circuit with the tweezers

To reassemble your device, follow these instructions in reverse order.