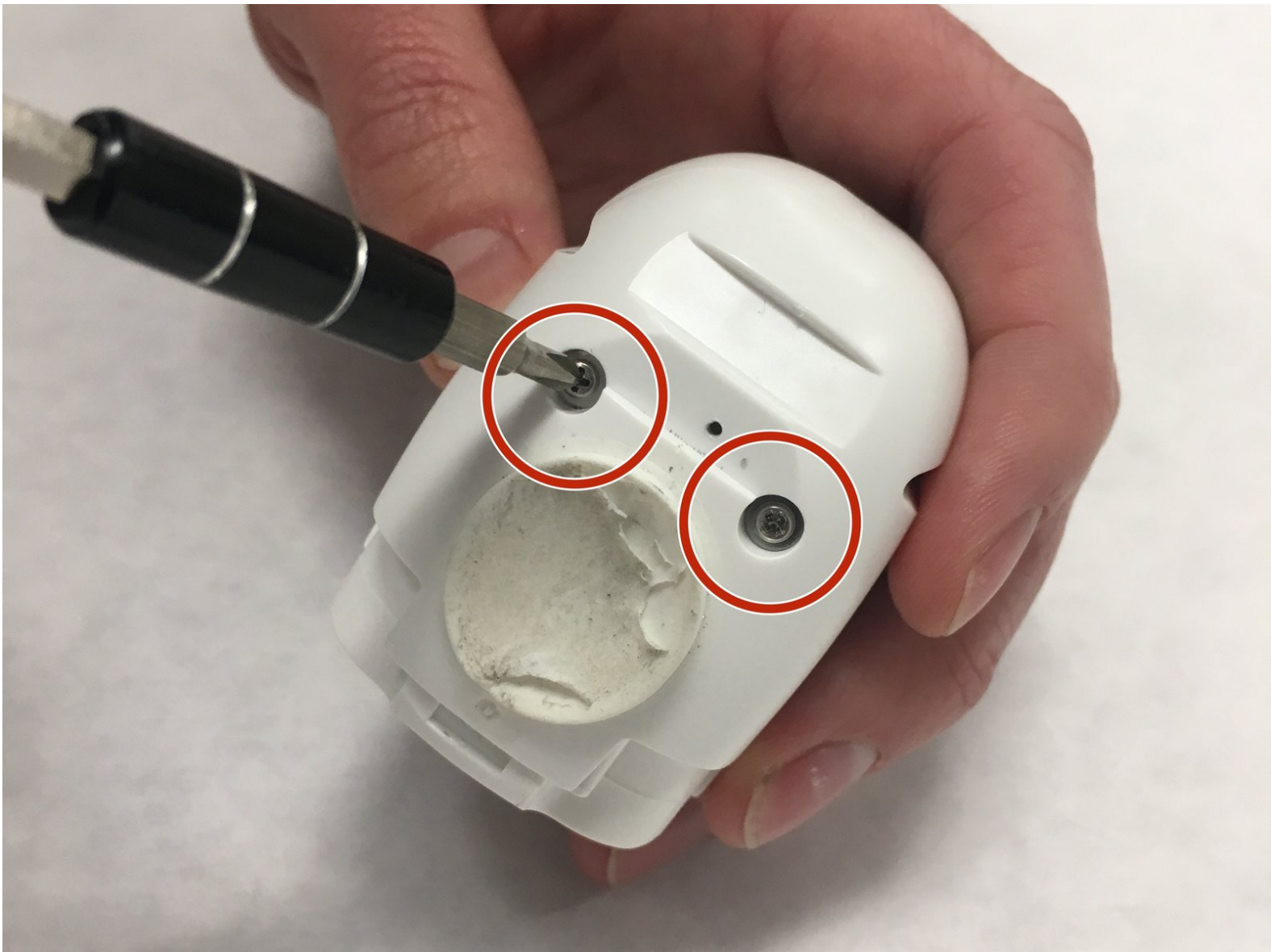




Netgear Arlo Charging Port Replacement

Replacement guide for the charging port under the battery cover in a Netgear Arlo.

Written By: Brian Johnson



INTRODUCTION

This is a step-by-step guide on how to remove the charging port in a Netgear Arlo



TOOLS:

- [Fingers](#) (1)
- [JIS #0 Screwdriver](#) (1)
- [iFixit Opening Tools](#) (1)
- [JIS #00 Screwdriver](#) (1)



PARTS:

- [3.7V Rechargeable Li-ion Arlo Battery](#) (4)

Step 1 — Plastic Housing



- Remove the 2 (3.5mm) housing screws with a J0 screwdriver.

Step 2



- Slide the unlocked battery cover forward to remove 2 (3.5mm) screws, that are behind the cover.

Step 3



- Open the battery cover and remove the 2 (3.5mm") screws from under the cover.

Step 4



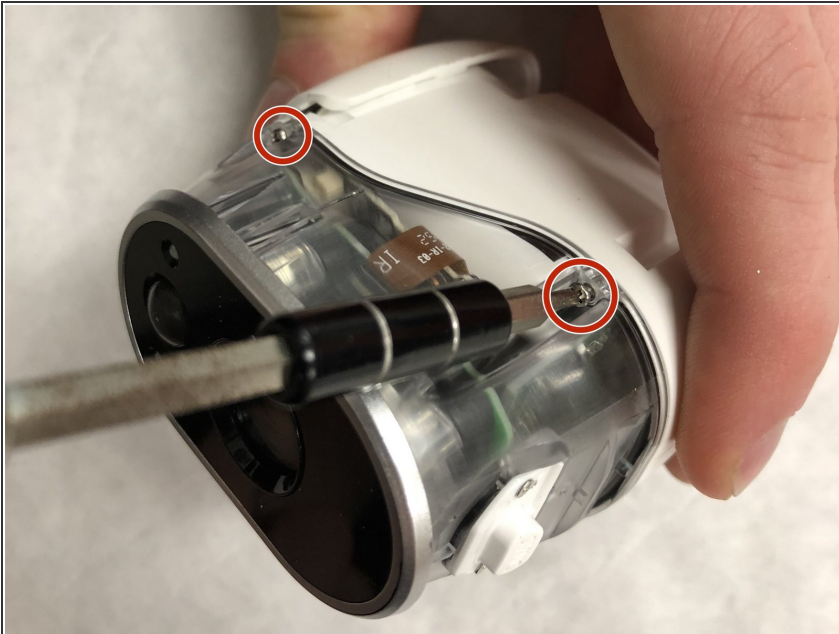
- Use a plastic opening tool to start separating the plastic housing from the front side of the battery cover.
- Next, start separating the plastic cover from the rear of the plastic housing, and work your way down the seam line.
- ❗ Make sure the plastics snaps on the front of the plastic get unhooked from the grey plastic ring around the front of the camera.

Step 5



- Remove the screw (3.5mm) near the sync button holding the opposite side of the camera on.
- Remove the second screw (3.5mm) on the back of the camera to remove the second housing.
- Once the screws are removed use an opening tool to pry back the second plastic mount.

Step 6 — Lens Assembly



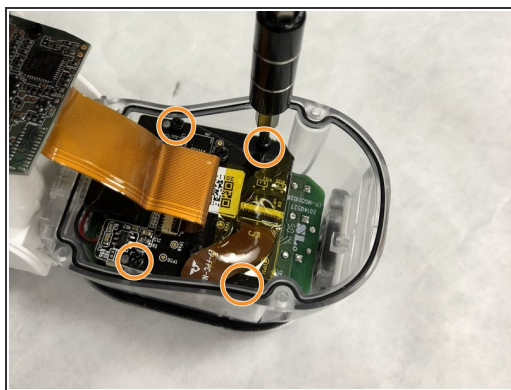
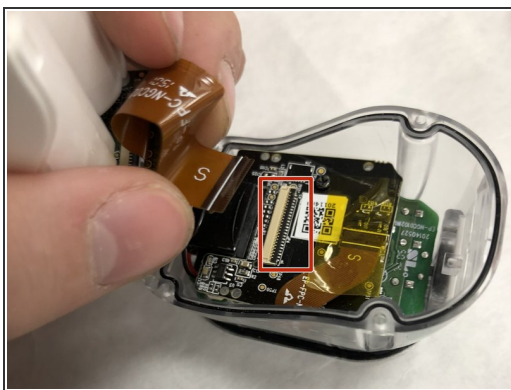
- Remove 4 (6mm) large screws with a J00 screwdriver.
- ⓘ There are 2 on each side. This will allow you to remove the clear housing from the white housing.

Step 7



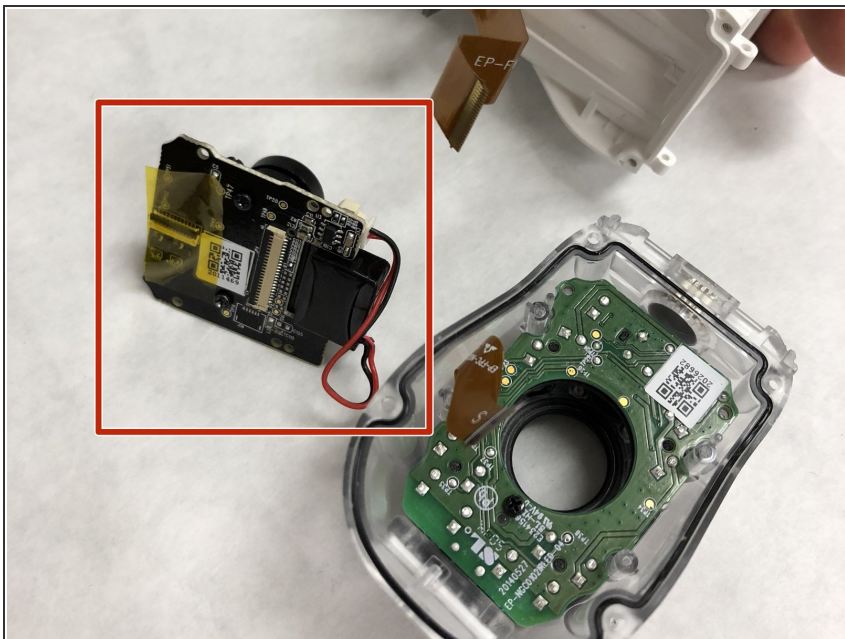
- Once screws are removed, pull apart the clear housing.
- Remove rod from camera cover.

Step 8



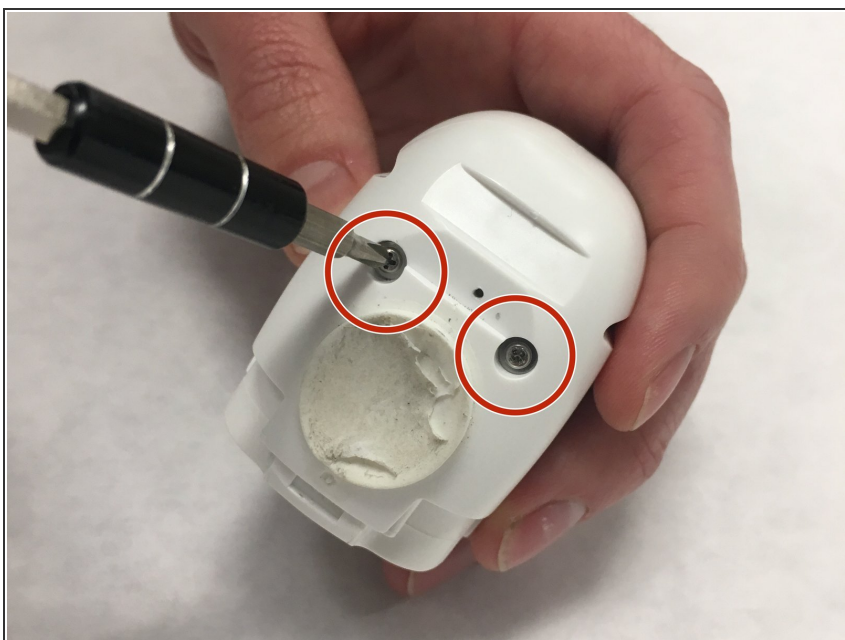
- Remove Large ribbon cable first to disconnect front of camera from main body.
- Remove 4 (3.5mm) small black screws from motherboard of the camera unit.
- Remove smaller ribbon cable from underneath yellow tape.

Step 9



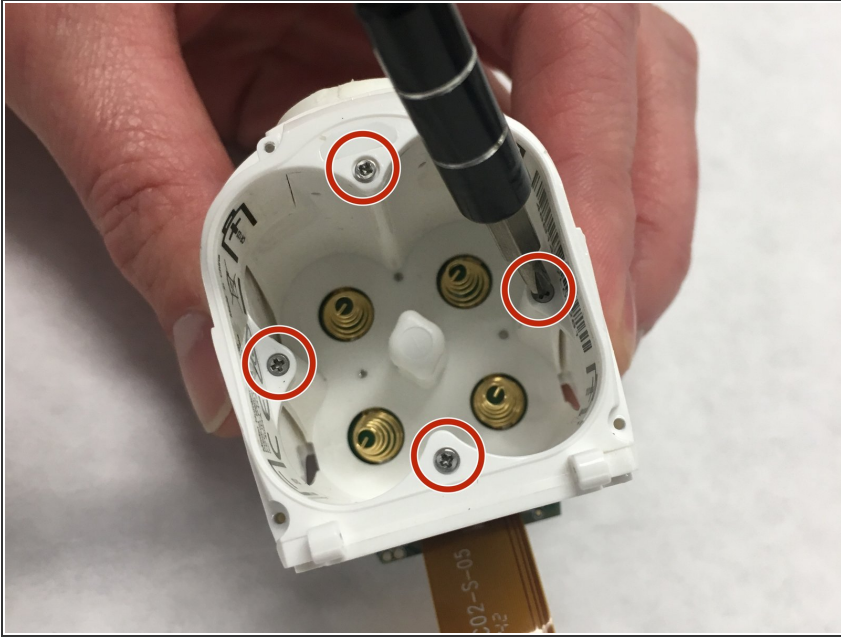
- Once all ribbon cables are removed, remove the motherboard and camera assembly by pulling up on the black camera motherboard.

Step 10 — Charging Port



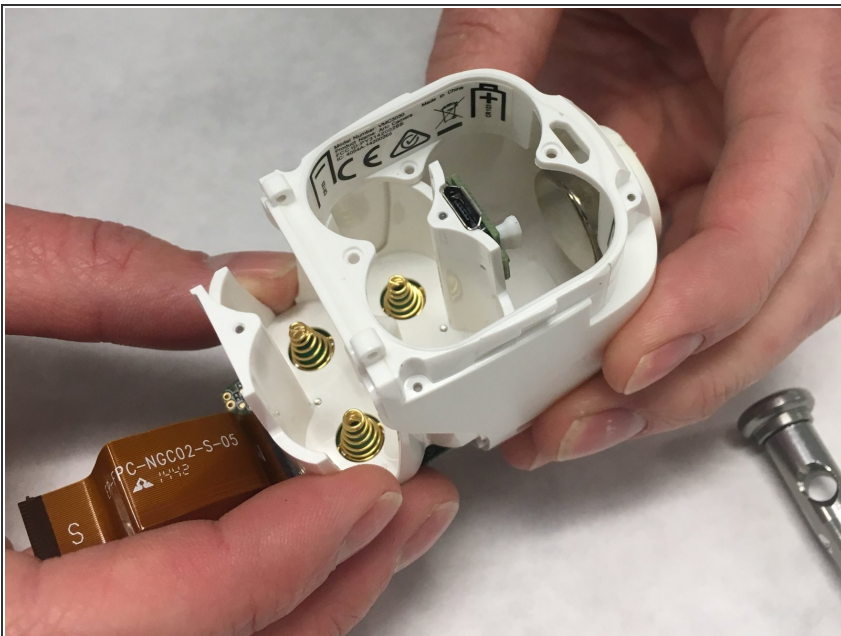
- Remove the 2 (.135") housing screws with a JIS00 screwdriver

Step 11



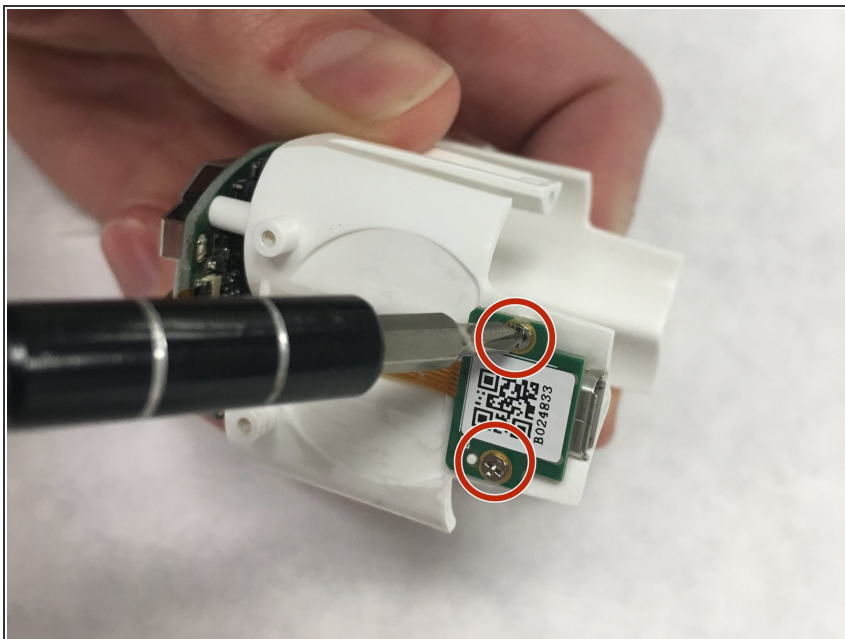
- Remove 4 (.135") screws on the inside of the battery compartment using the JIS 00 screwdriver.

Step 12



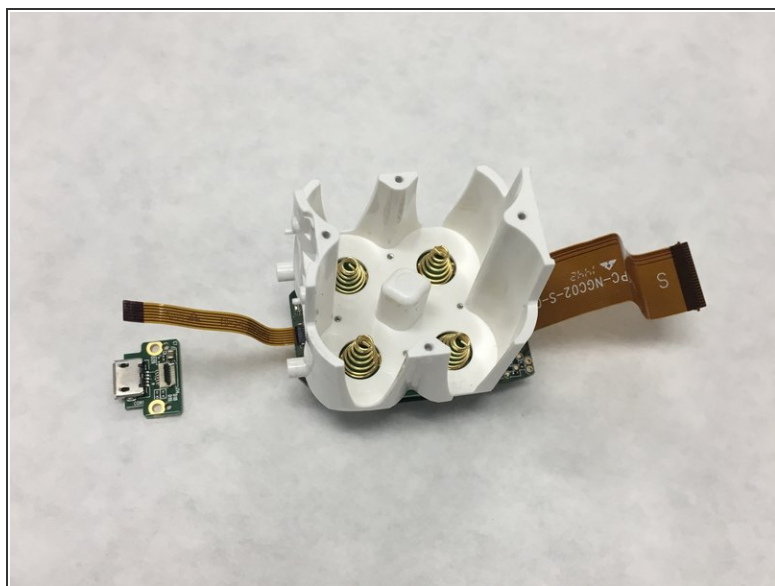
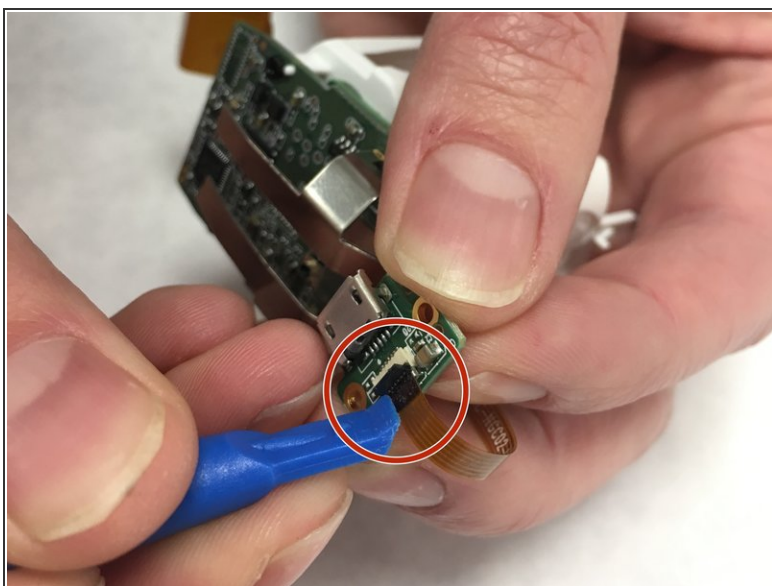
- Slide the two halves apart

Step 13



- Remove the 2 (.135") screws holding the charging port on using the JIS 00 screwdriver.

Step 14



- Remove the ribbon by prying the black ribbon holder up using the opening tool.
- Pull the ribbon away from the charging port.

To reassemble your device, follow these instructions in reverse order.