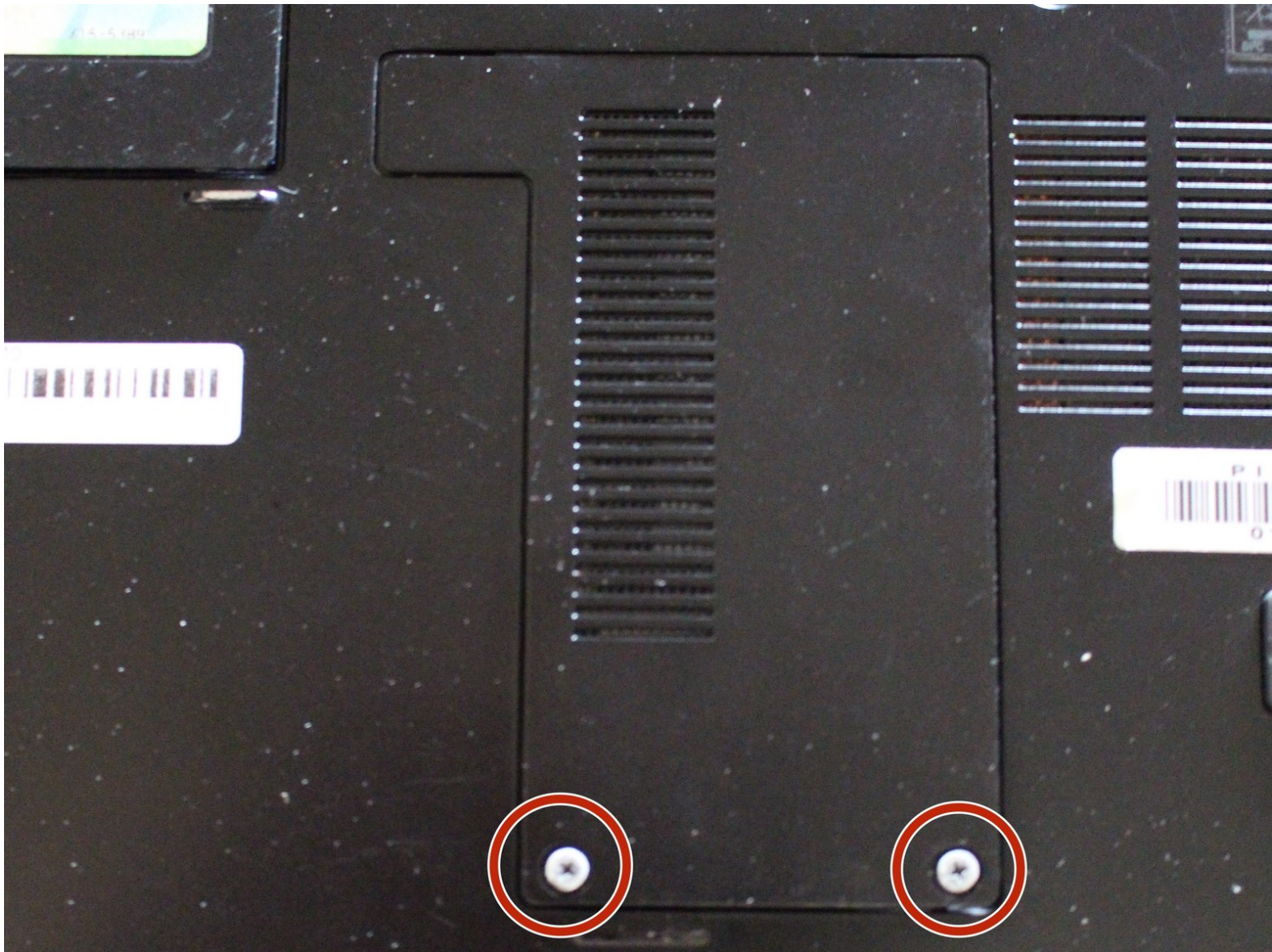




Dell Latitude E4310 Memory Door Replacement

Memory door removal for Dell Latitude E4310.

Written By: Laura Lujan



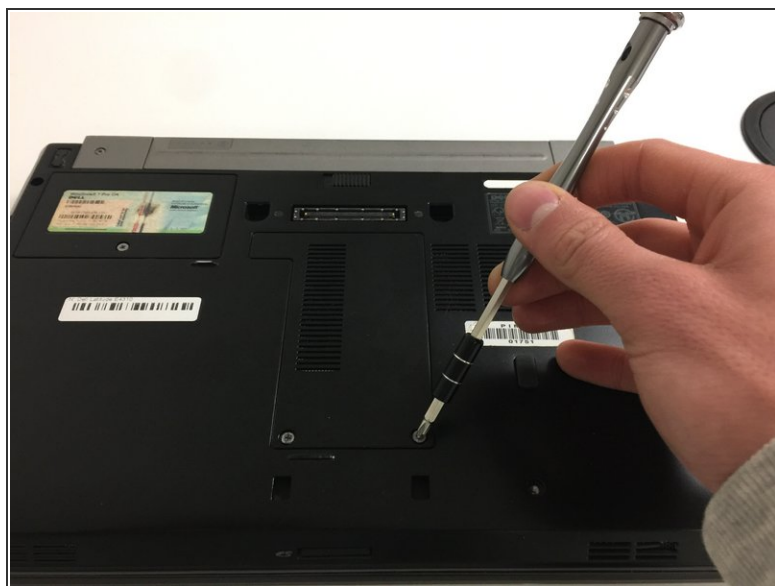
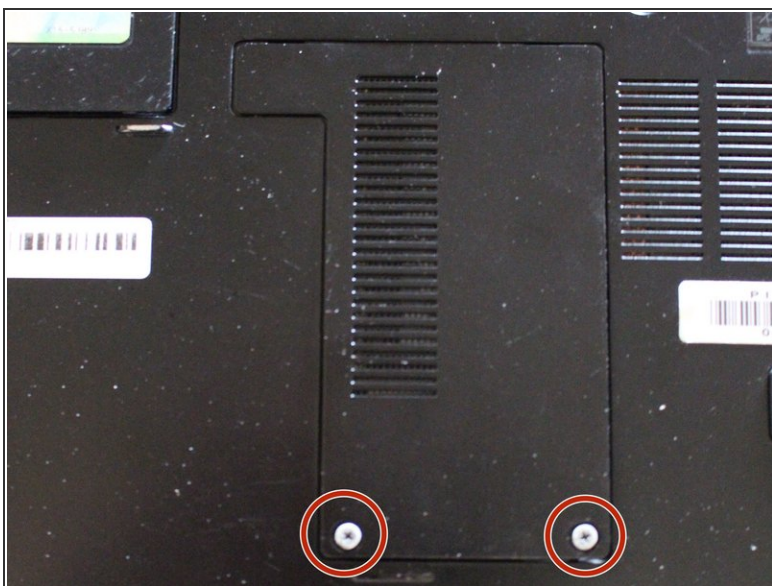
INTRODUCTION

Use this guide to remove the memory door on the Dell Latitude E4310 Laptop to access the RAM for upgrade or replacement.

TOOLS:

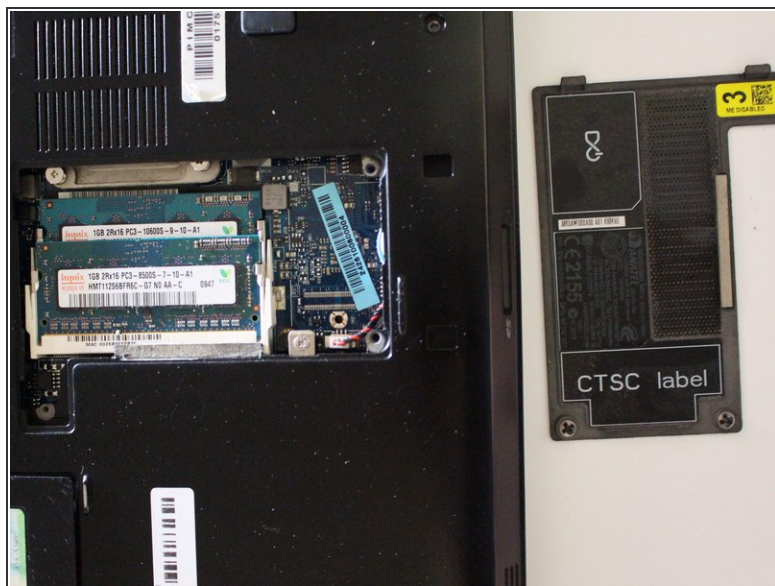
- [Phillips #1 Screwdriver](#) (1)
-

Step 1 — Memory Door



- Unscrew the two 4mm Phillips #1 screws.

Step 2



- Lift up the panel with your finger.
- ⓘ The screws are clipped to the panel and will remain attached.

To reassemble your device, follow these instructions in reverse order.