



HP ENVY 5530 Gear for Scanner Arm Replacement

How to replace the gear found on the inside of the scanner arm.

Written By: Elizabeth Surface



INTRODUCTION

Gear allows the scanner arm to follow the grain track and scan the document. Before replacing the gear make sure the printer is unplugged.



TOOLS:

- [TR10 Torx Security Screwdriver](#) (1)
-

Step 1 — Gear for Scanner Arm Actuator



- Unscrew and remove the center 13mm T10 Torx Security screw using the iFixit screwdriver
- Unscrew and remove the top right 13mm T10 Torx Security screw using the iFixit screwdriver
- Unscrew and remove the bottom left 13mm T10 Torx Security screw using the iFixit screwdriver

Step 2



- Unscrew and remove the bottom 13mm TR10 Torx Security screws using the iFixit screwdriver

Step 3



- Unscrew and remove the top right 13mm TR10 Torx Security screws using the iFixit screwdriver

Step 4



- Unscrew and remove the upper 13mm TR10 Torx Security screw using the iFixit screwdriver

Step 5



- Remove the scanner lid and plate (top cover).
- Locate the Scanner Arm Actuator.

Step 6



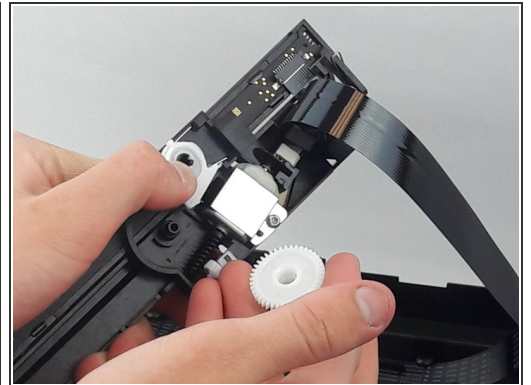
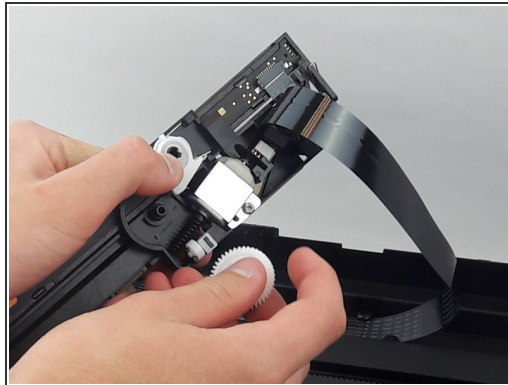
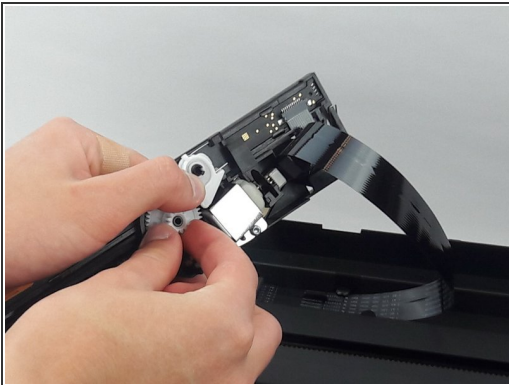
- Locate the Scanner Arm Accuator and remove.

Step 7



- Unscrew and remove the 13mm TR10 Torx Security screw in the center of the gear using the iFixit screwdriver

Step 8



- Locate the white gear and remove.

To reassemble your device, follow these instructions in reverse order.