



Swann Doorphone Video Intercom Doorbell Replacement

This guide can be used to help replace a doorbell on the Swann Doorbell Video Intercom.

Written By: Joseph Kelemen



INTRODUCTION

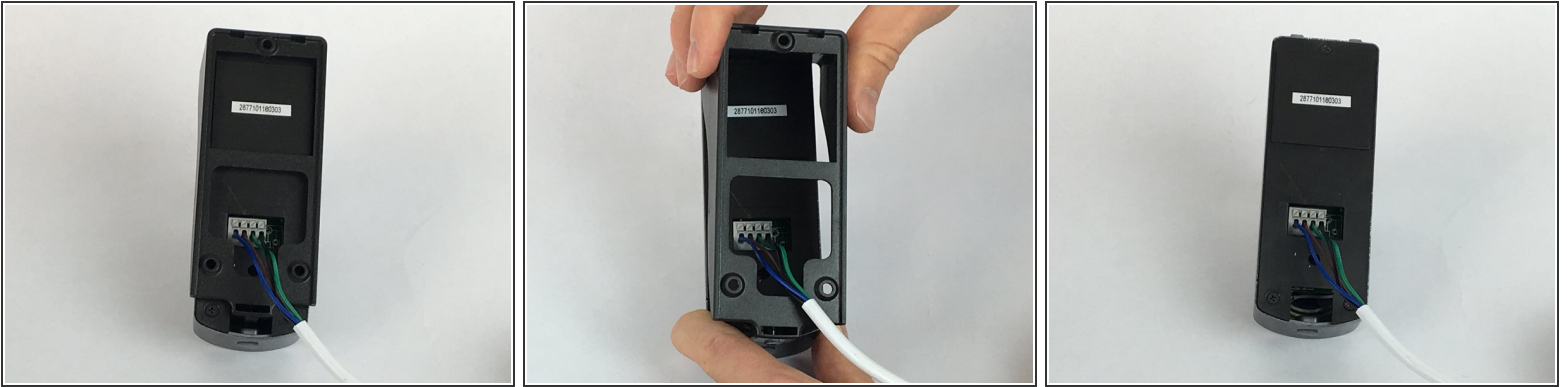
This guide can be used to help replace a broken or stuck Doorbell located on the outside camera on your Swann Doorphone Video Intercom.



TOOLS:

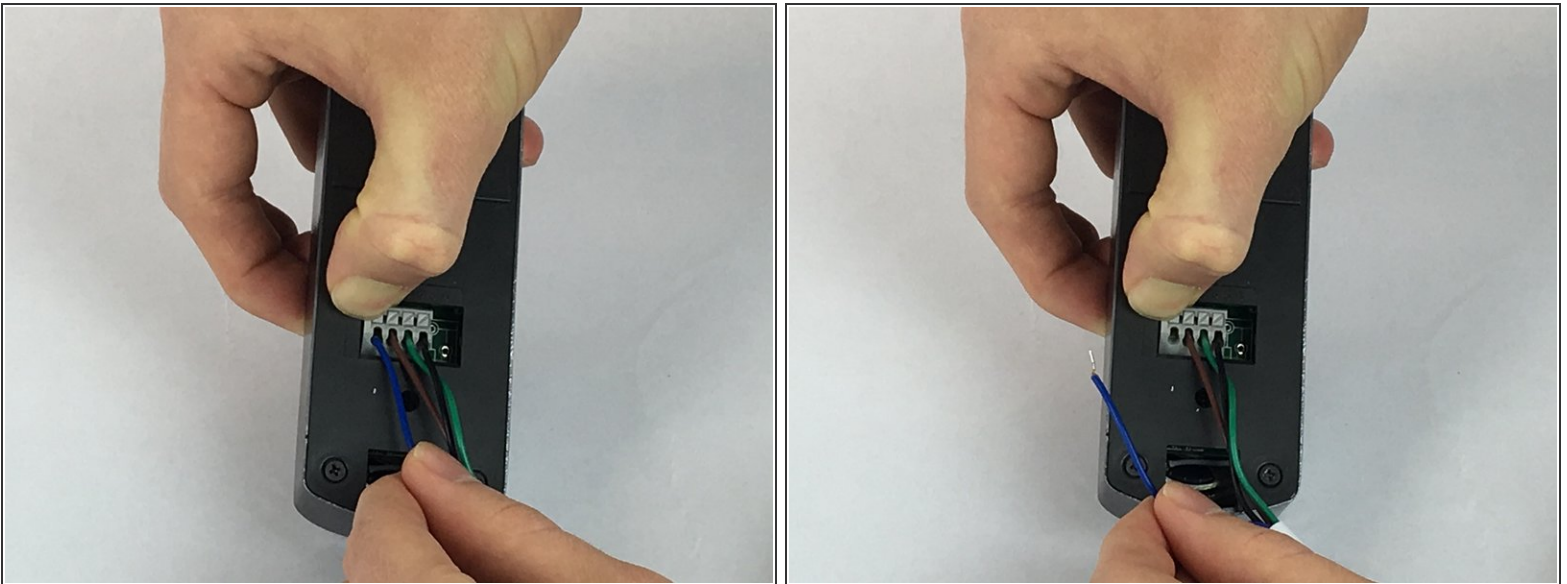
- [JIS #0 Screwdriver](#) (1)
-

Step 1 — Camera



- Flip the outdoor camera over so that the underside is facing up.
- Remove the back cover by grabbing the sides of the camera and pulling towards your body.

Step 2



- With the back cover of the outdoor camera off, press the first gray button, with blue wire underneath, down as shown in the picture.
 - While pressing the gray square button, remove the blue wire from the first opening under the button.
- ✦ Be sure to remove the same color wire for the outdoor camera as was used for the indoor video intercom.

Step 3



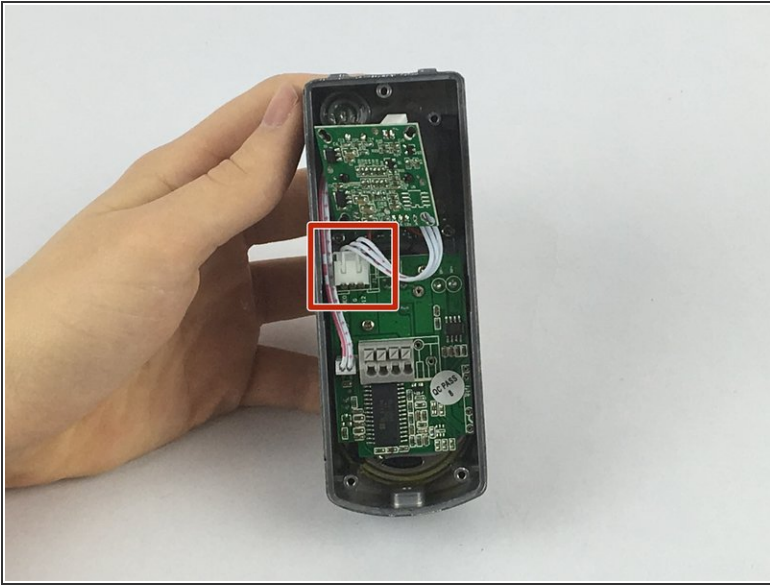
- Remove the other wires using the same steps as the blue wire.
- Using the JIS #0 screwdriver, remove the 2mm screws from the back plate.
- Remove the back plate by pulling the plate away from the device.

Step 4



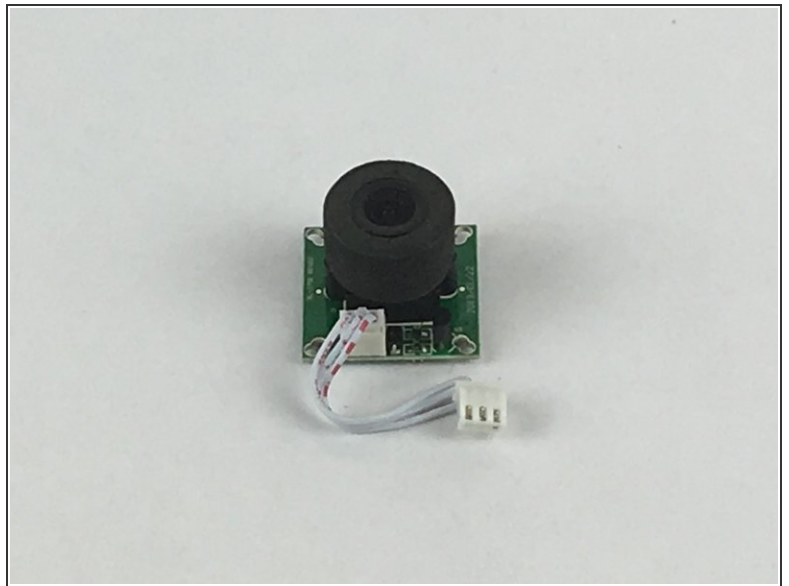
- Using the JIS #0 screwdriver, remove the 1mm screws from behind the camera.

Step 5



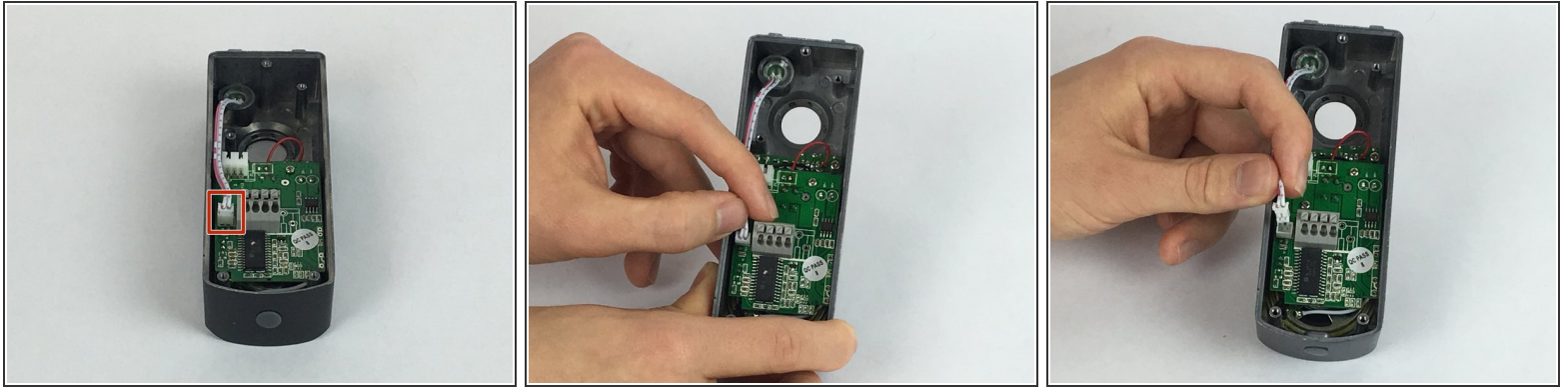
- Using one of the tweezers from the Precision Tweezers Set, gently place them around the wire connector attached to the camera.
- Pull slowly in the direction of the cables until the connector is no longer attached.

Step 6



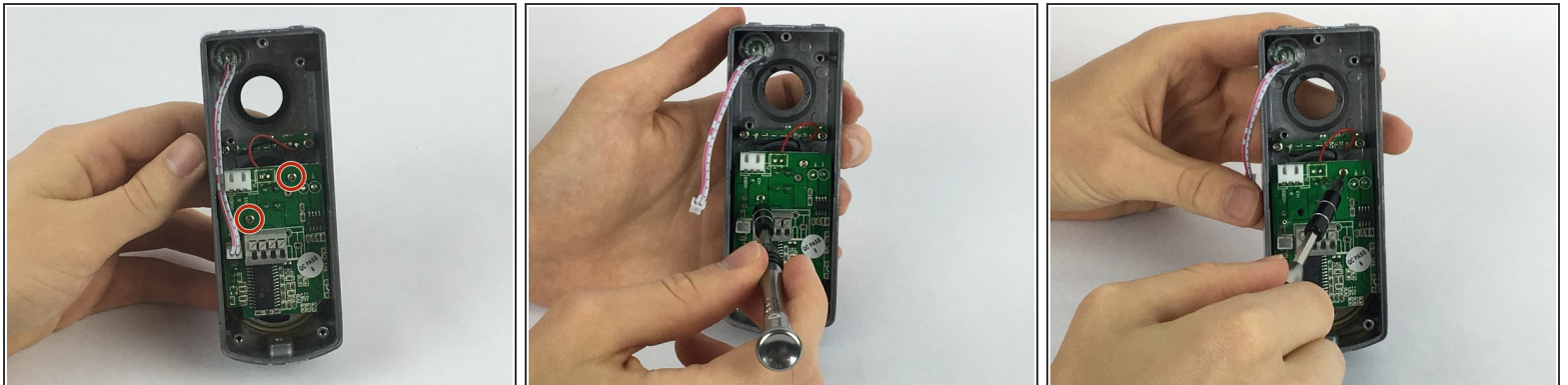
- Remove the camera from the device.

Step 7 — Doorbell



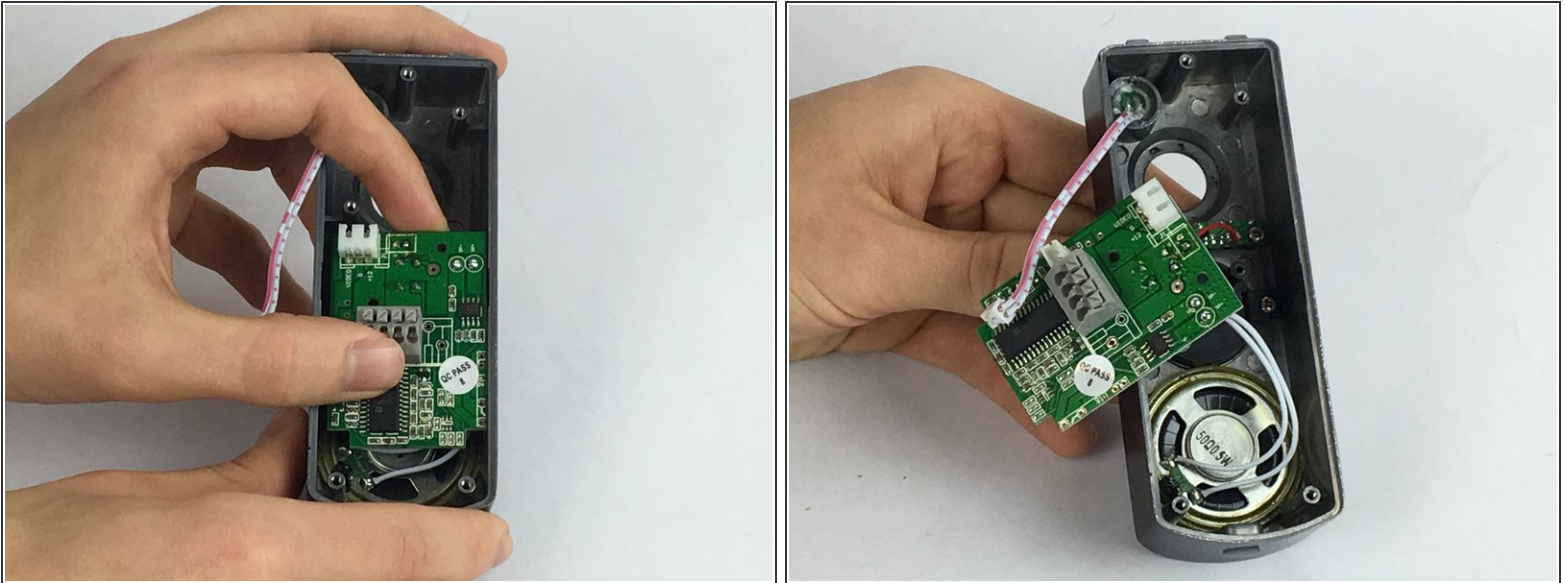
- Using your fingers, take hold of the wire connector attached to the main board
- Pull slowly towards your body until the connector is no longer attached.

Step 8



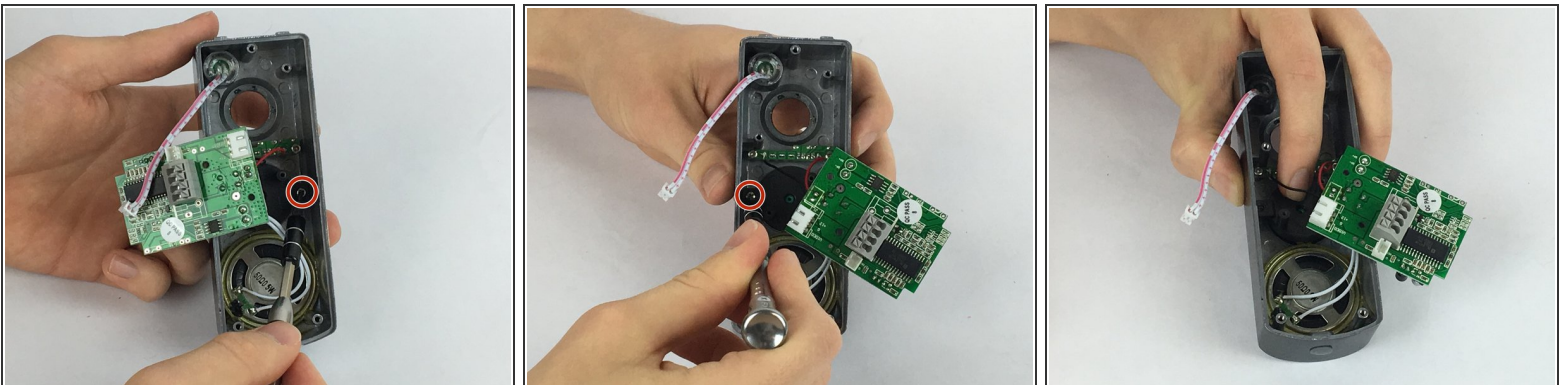
- Using the JIS #0 screwdriver, remove the 2 mm screws diagonal from each other from the main board.

Step 9



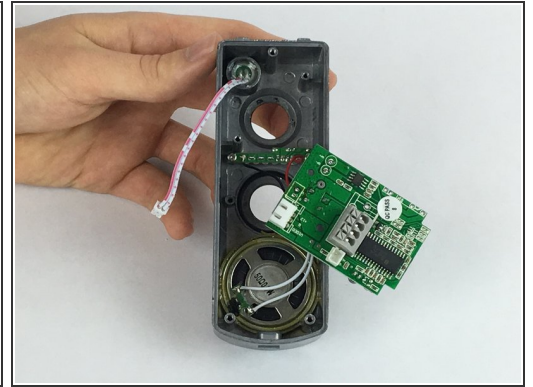
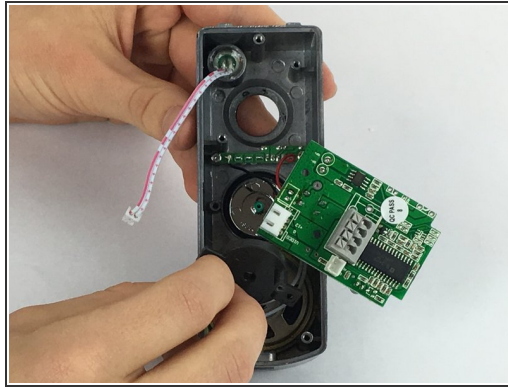
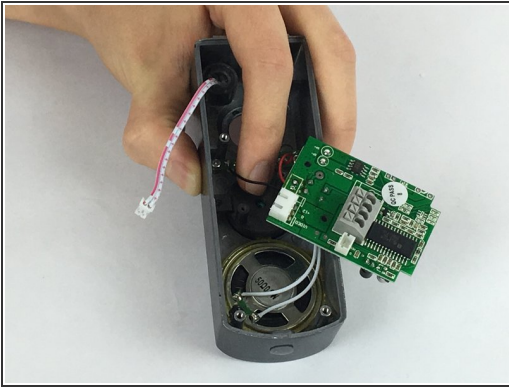
- Gently pull the main board away from the inside of the device and leave to the side.
- ⓘ The main board will still be attached to the device by a remaining set of wires, but do not need to be removed.

Step 10



- Using the JIS #0 screwdriver, remove the 1mm screws from each side of the doorbell spring-loaded cover-plate
- ⚠ While removing the second screw, hold down the cover-plate with your index finger to prevent the plate from springing out.

Step 11



- Remove the black circular doorbell cover-plate.
- Remove the metal circular doorbell button.

To reassemble your device, follow these instructions in reverse order.