



# Altec Lansing Mini Lifejacket 2 Battery Replacement

If the battery in your Altec Lansing Mini...

Written By: Stephen Albrecht



# INTRODUCTION

If the battery in your Altec Lansing Mini Lifejacket 2 isn't holding a charge or is showing signs of failure, use this guide to replace it.

## TOOLS:

Metal Spudger (1)

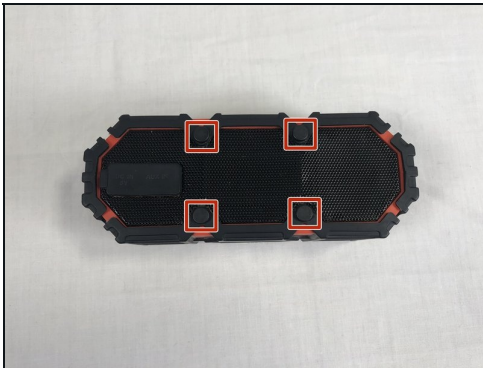
Phillips #2 Screwdriver (1)

Phillips #1 Screwdriver (1)

Tweezers (1)

Spudger (1)

## Step 1 — Back Panel



- Use the spudger to remove the eight black pins from the front and back of the wire screens.

## Step 2



- Detach the eight secondary pins from the front and back of the wire mesh plates with a spudger.
- ① Removing the secondary pins from the rubber casing is optional.

## Step 3



- Remove both black and orange layers from the speaker body.

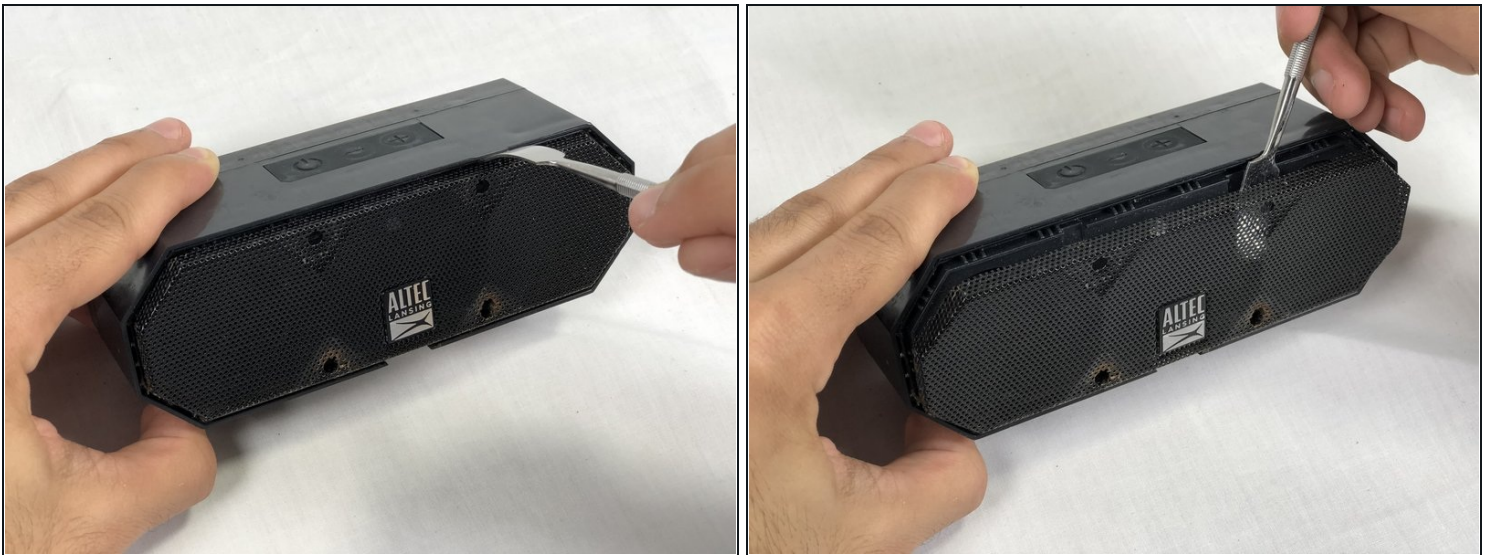


## Step 4



- Remove the single 7.8mm Phillips #2 screw from the mounting plate located under the device.
- Slide the mounting plate out to remove it.

## Step 5



- Pry off the wire mesh on both sides using a metal spudger.

⚠ Be gentle to avoid bending the mesh.

## Step 6



- Using [tweezers](#), remove the four rubber stoppers in each corner of the rear panel.

## Step 7



- Remove the four 13.7mm Phillips #1 screws located underneath the rubber stoppers.

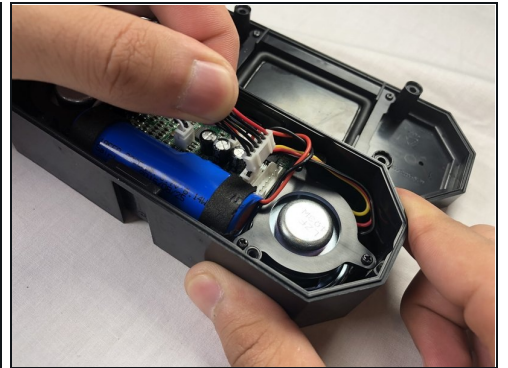
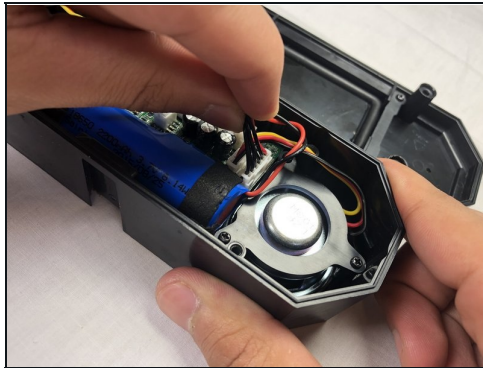


## Step 8



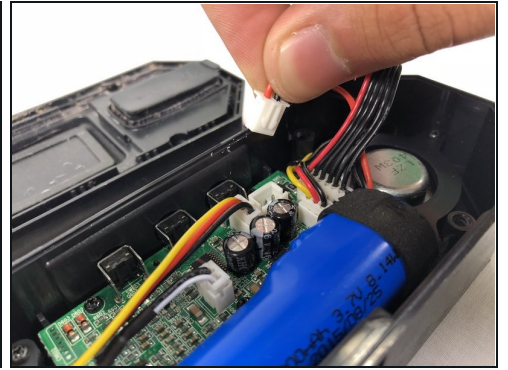
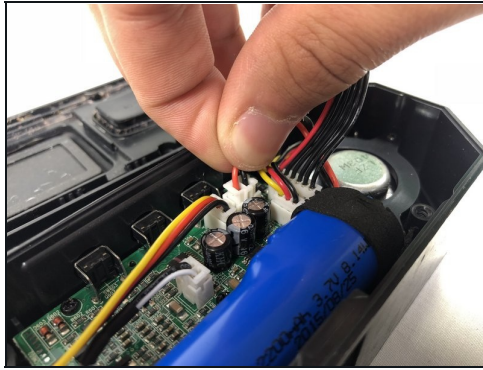
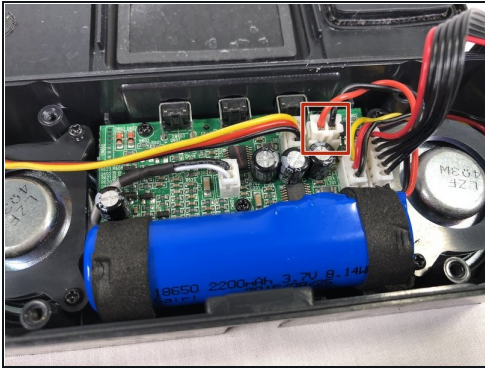
- Pull the case apart to access the interior components.

## Step 9



- To remove the back panel, gently pull out its wire harness.

## Step 10 — Battery



- Disconnect the battery from the motherboard.
- ① The battery is not secured within the case and can be removed after detaching its wiring from the circuit board.

To reassemble your device, follow these instructions in reverse order.