



HP Spectre 13 4003dx x360 Display Assembly Replacement

This guide will show you how to effectively and safely remove and replace your old and non-functional display assembly with a new one.

Written By: Ethan Plumer



INTRODUCTION

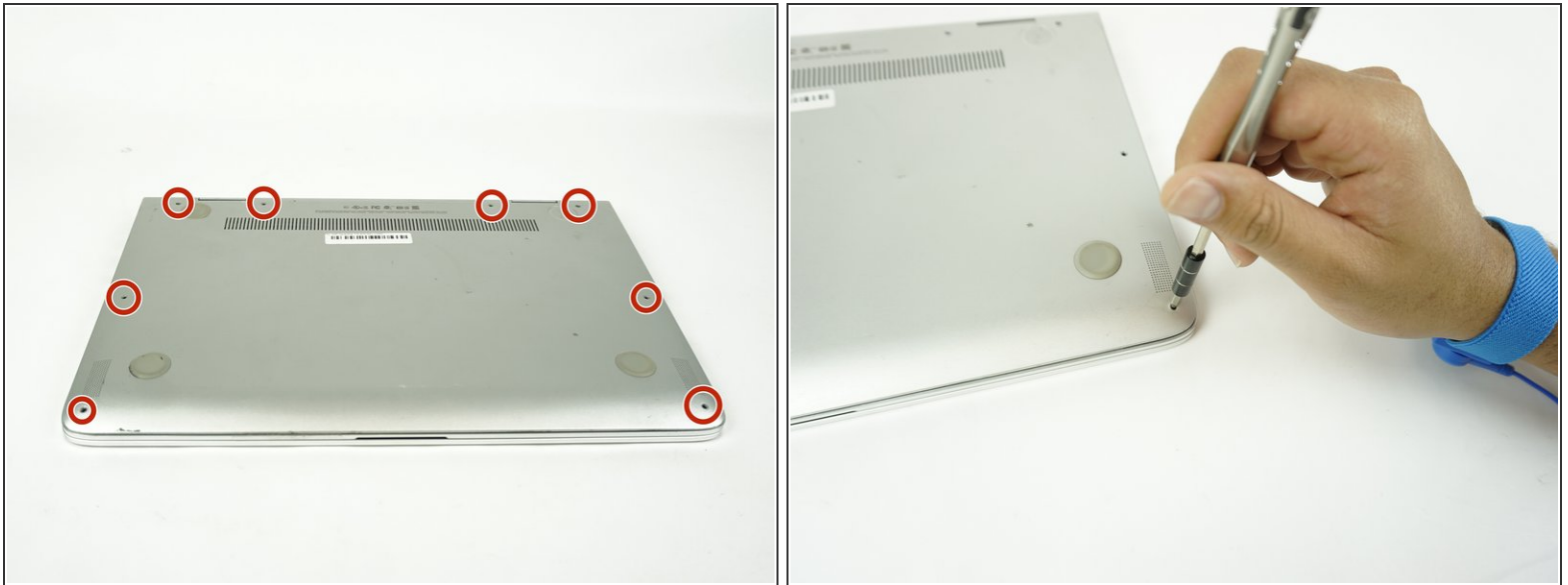
This guide will give you step-by-step instructions on how to replace your display assembly. Make sure you have a clean, dry, uncluttered, and roomy work space that has good lighting before you start. Also, make sure that your display assembly actually needs to be replaced by consulting our [troubleshooting guide](#).



TOOLS:

- [Anti-Static Wrist Strap](#) (1)
- [Phillips #00 Screwdriver](#) (1)
- [Magnetic Project Mat](#) (1)
- [Tweezers](#) (1)
- [T4 Torx Screwdriver](#) (1)

Step 1 — Battery



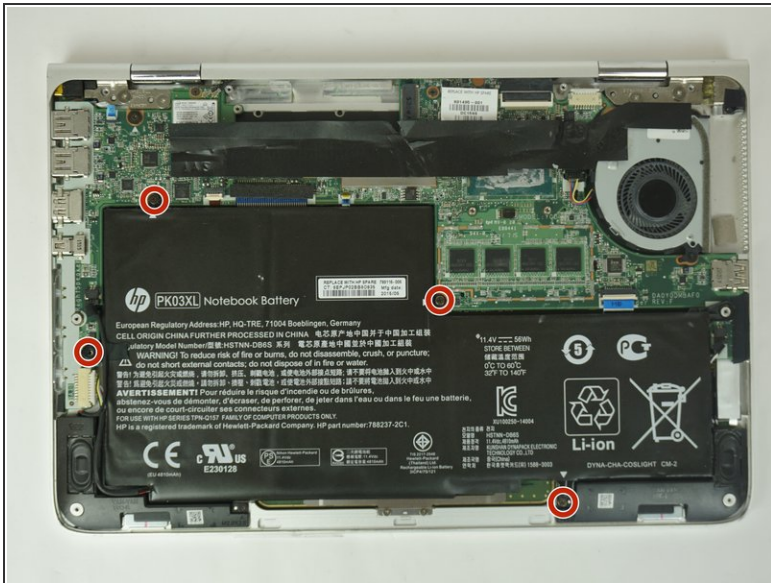
- ⓘ Before you begin, be sure to turn off your laptop and discharge the battery down to 25%.
 - Turn the computer upside down.
 - Use the T5 Torx Screwdriver to remove the eight 3.3 mm screws.
- ⓘ Make sure to use the [magnetic project mat](#) to help you keep track of the small screws.

Step 2



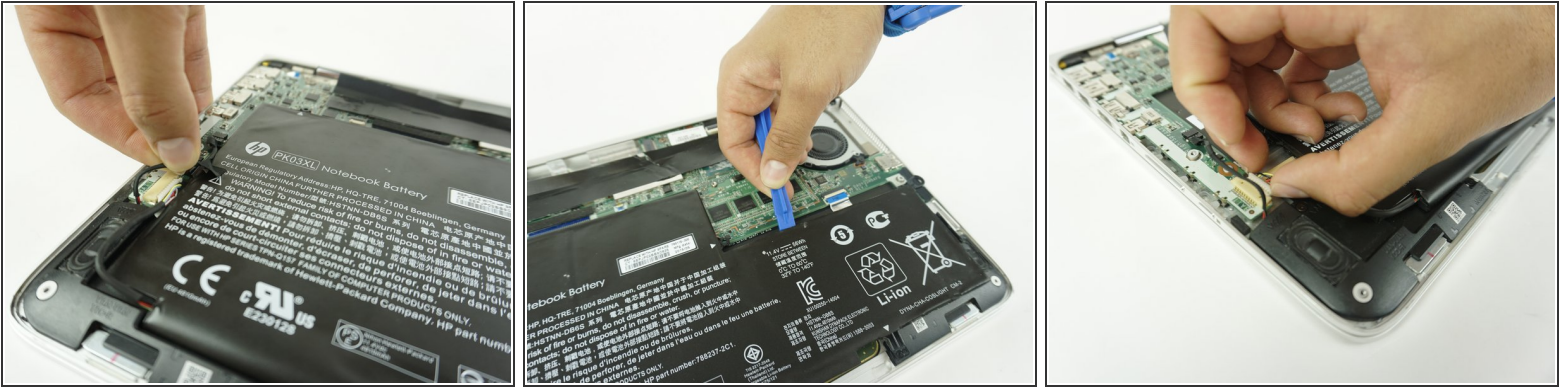
- Use an opening tool to pry up and loosen the back case from the laptop.
 - ⚠ If the back case doesn't loosen easily, there may be screws hidden underneath the rubber feet. Carefully pry a foot up and remove any hidden screws.
- Remove the back case.

Step 3



- Remove the four 2mm Phillips #00 screws securing the battery.
- ⓘ The screw locations are marked by small white arrows on the battery.

Step 4



- Peel off the adhesive on the left side of the battery holding the speaker wire down.
- Move the battery slightly to gain access to the battery plug, located on the left edge of the battery.
- Carefully unplug the battery by pulling the connector towards the battery.

⚠ Pull parallel to the battery, not straight up.

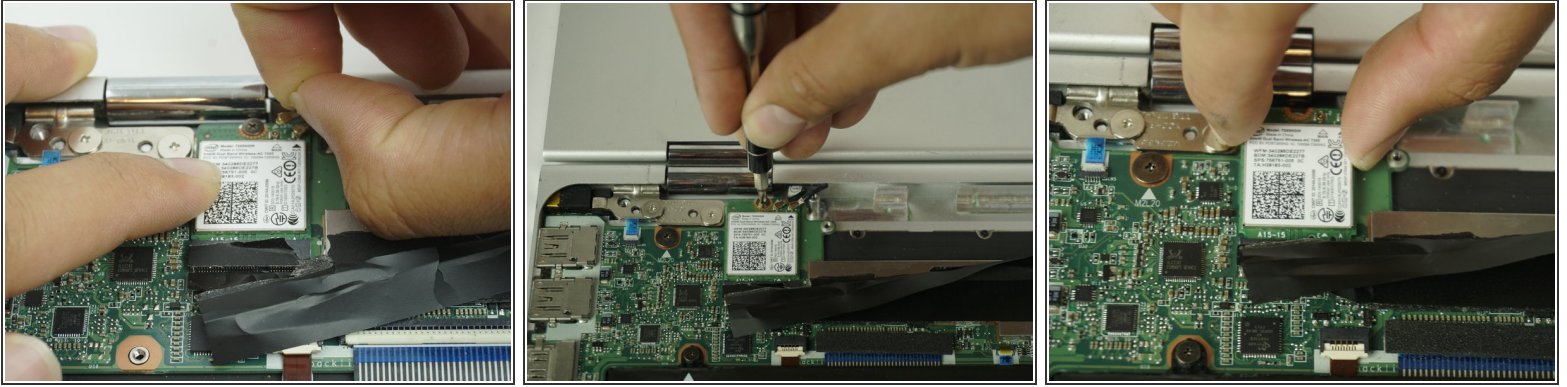
- Remove the battery.
- ⓘ It is normal for your battery to flex and bend a bit where the wider section meets the narrower section.

Step 5 — Display Assembly



- Remove the two 2mm Phillips #00 screws from the fan.
- Disconnect the fan from the motherboard.

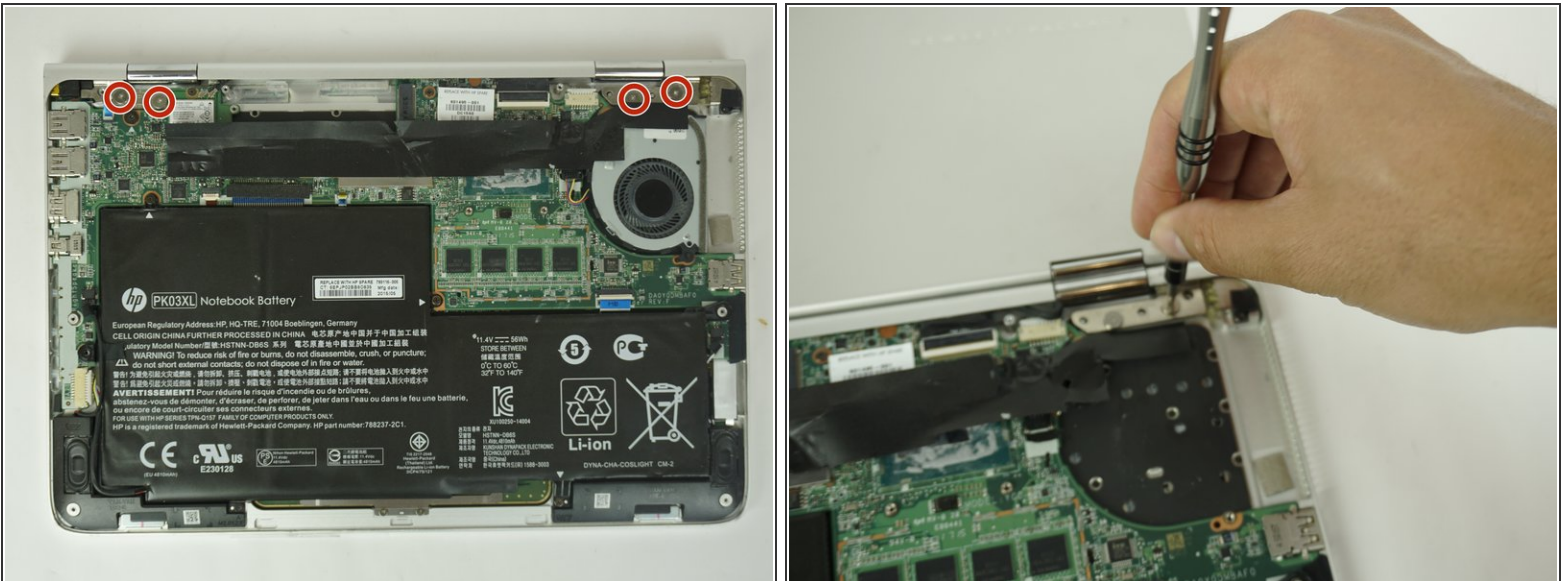
Step 6



- Using minimal force, disconnect both WiFi antennae cables.
- Remove the single Phillips #00 screw that secures the WiFi card.
- Slide the WiFi card up until it is completely removed.

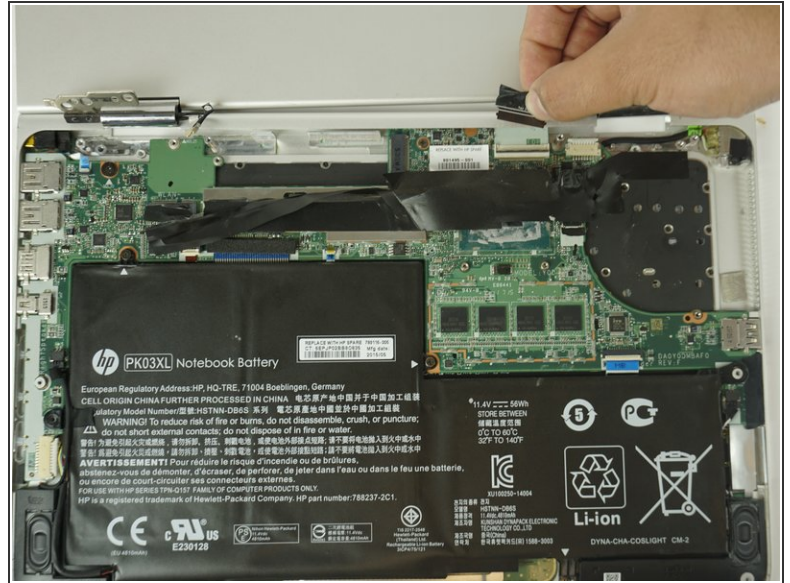
⚠ Do not pull up on the wireless module while it is still seated. You may inadvertently damage it.

Step 7



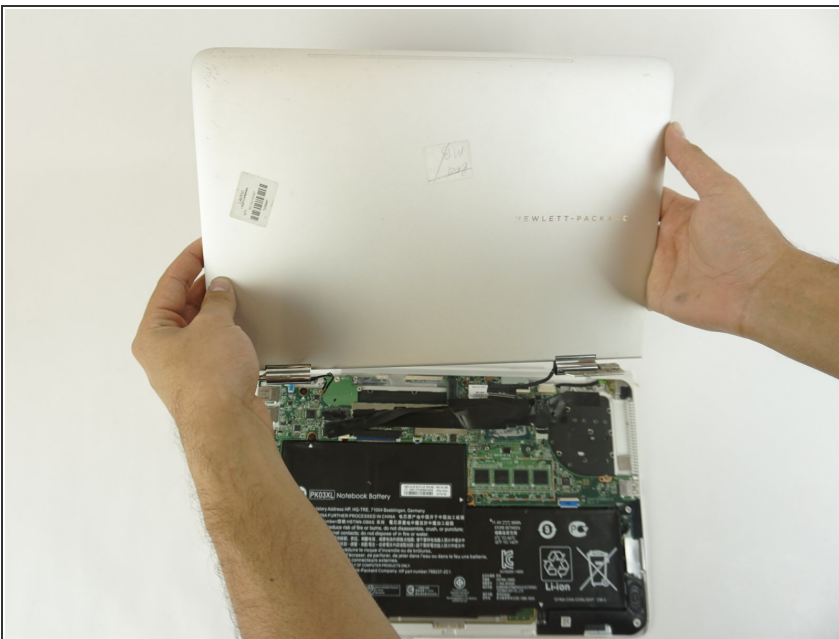
- Remove the four hinge screw with a Phillips #00 screwdriver.

Step 8



- Grip the black tape and pull up to unplug.

Step 9



- Separate the display assembly from the body of the computer.
- ⓘ As a result of the orientation of the hinges, you may need to rotate open the laptop to around 270 degrees to clear them.

To reassemble your device, follow these instructions in reverse order.