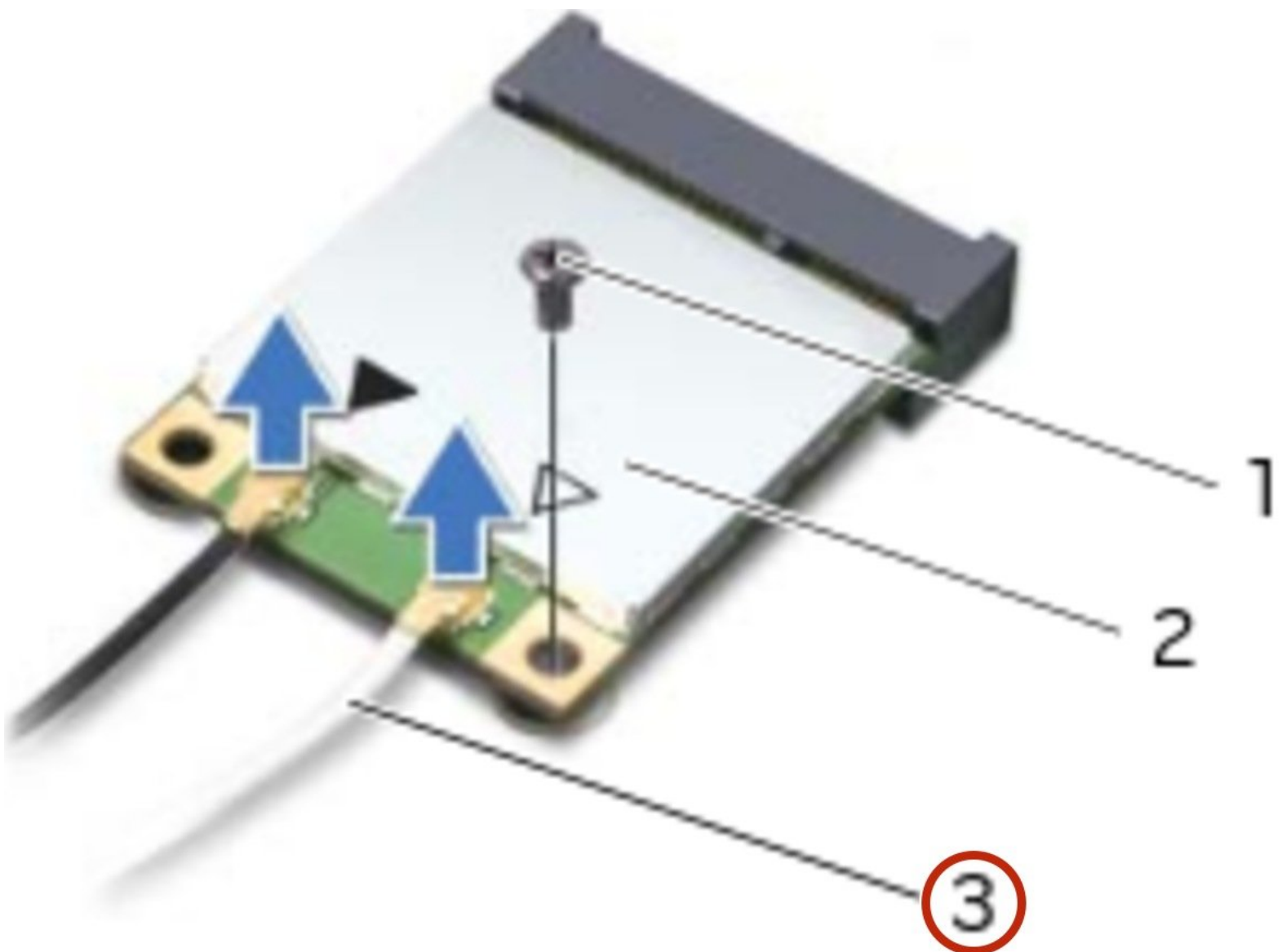




# Dell Alienware 14 Wireless Mini-Card Replacement

Follow this guide to remove and replace the wireless card for the Dell Alienware 14.

Written By: Terrence15



---

## INTRODUCTION

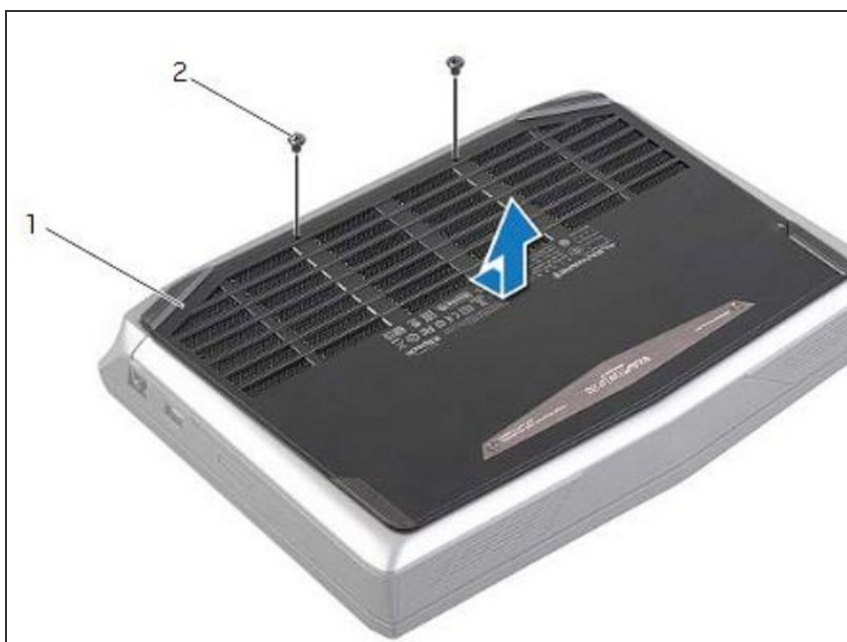
in this guide, we will be showing you how to remove and replace the Wireless Mini-Card.



### TOOLS:

- [Pro Tech Toolkit](#) (1)
-

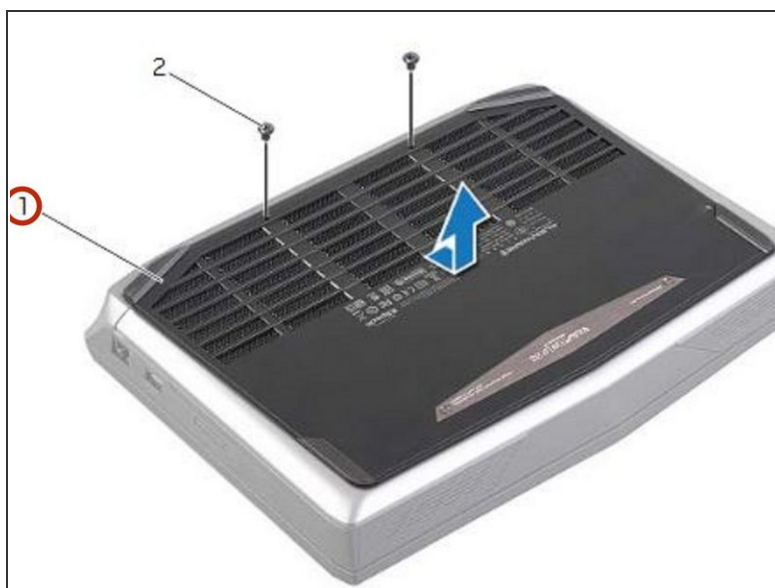
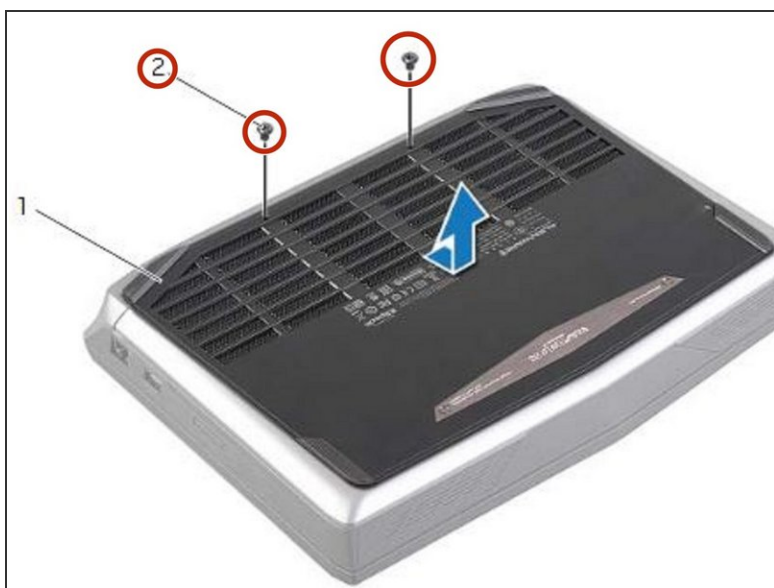
## Step 1 — Close the Display



**⚠ WARNING:** Before working inside your computer, read the safety information that shipped with your computer and follow the steps in [Before You Begin](#). After working inside your computer, follow the instructions in [After Working Inside Your Computer](#).

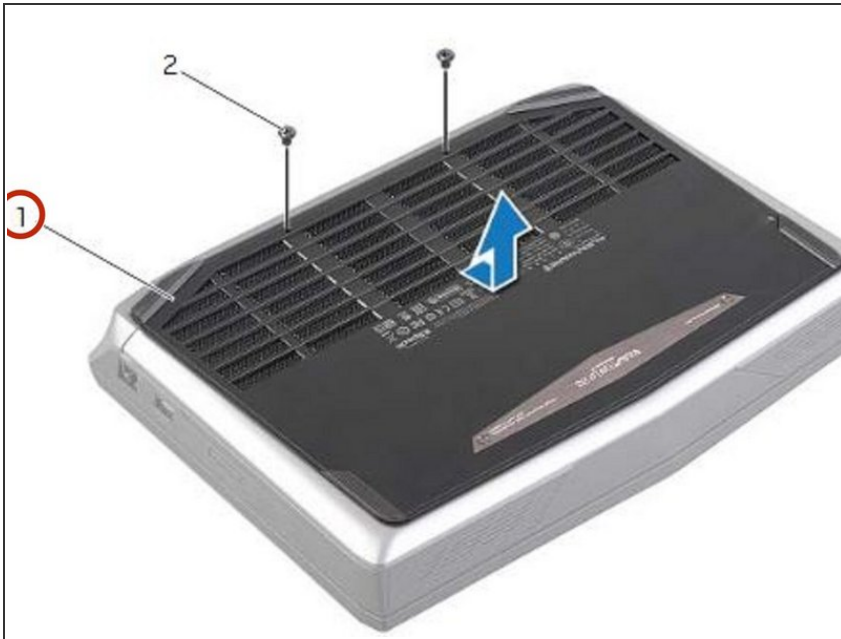
- Close the display, and turn the computer over.

## Step 2 — Remove the Screws



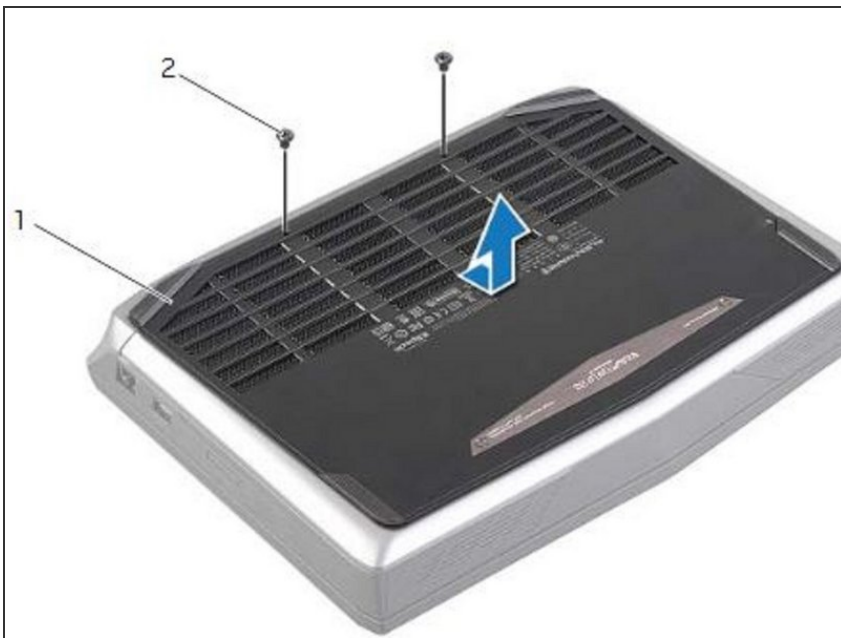
- Remove the screws that secure the base cover to the computer base.

### Step 3 — Slide and Lift the Base Cover



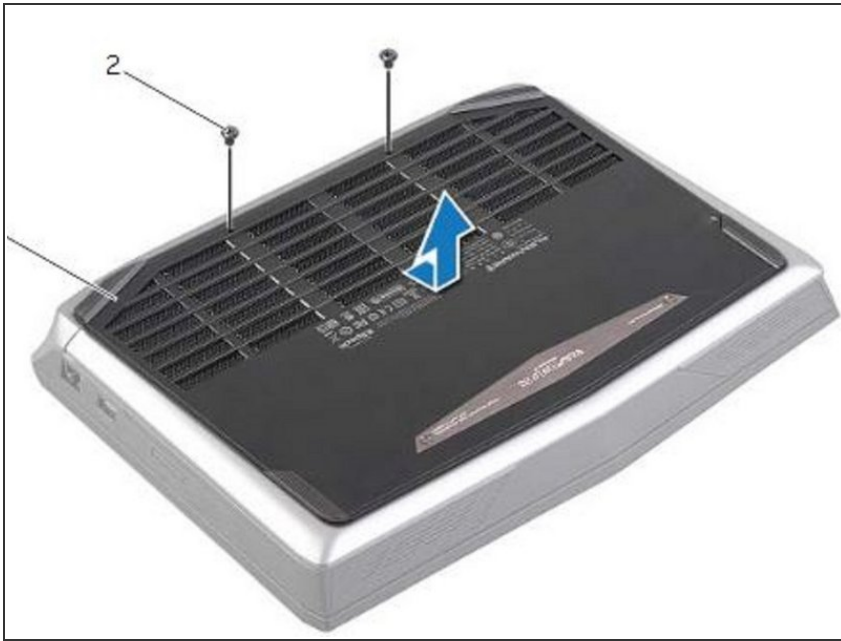
- Slide and lift the base cover off the computer base.

### Step 4 — Align the Tabs



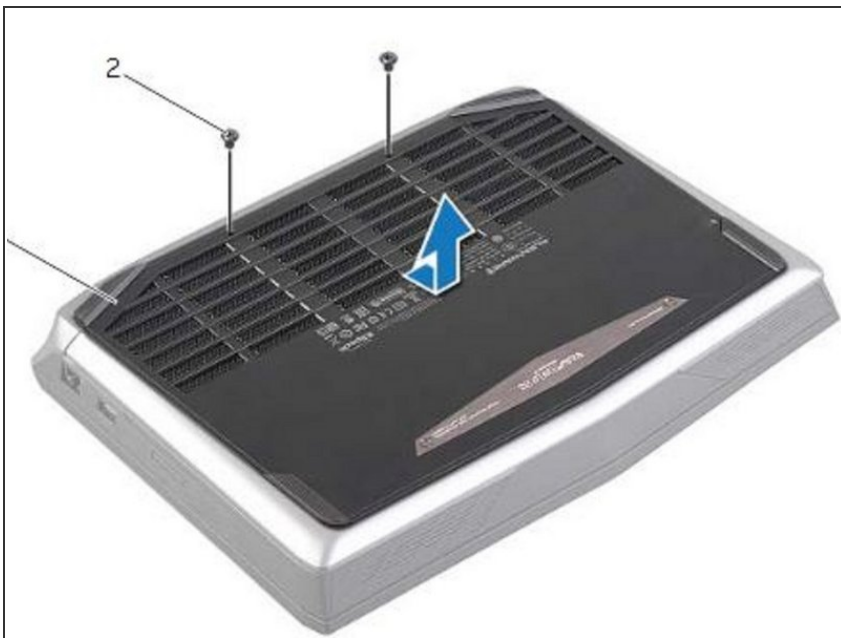
- Align the tabs on the **NEW** base cover with the slots on the computer base and slide the base cover into place.

## Step 5 — Replace the Screws



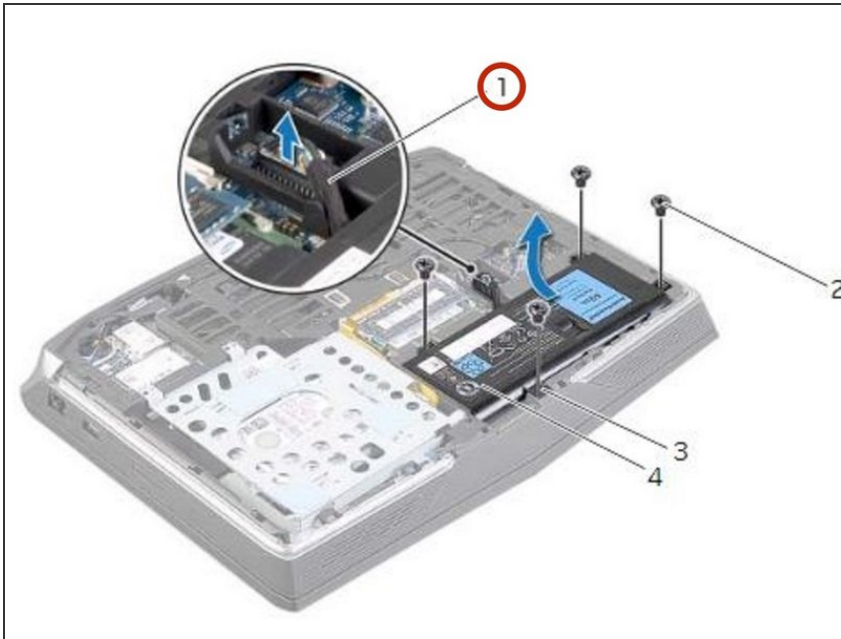
- Replace the screws that secure the base cover to the computer base.

## Step 6 — Turn the Computer Over



- Turn the computer over and open the display.

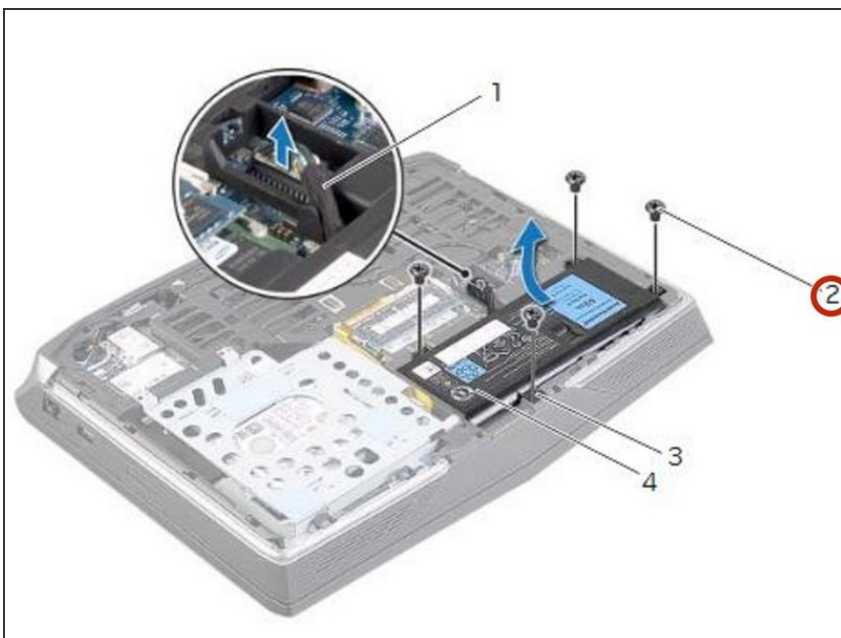
## Step 7 — Disconnecting the Battery Cable



**⚠ WARNING:** Before working inside your computer, read the safety information that shipped with your computer and follow the steps in [Before Working Inside Your Computer](#). After working inside your computer, follow the instructions in [After Working Inside Your Computer](#).

- Disconnect the battery cable from the system-board connector.

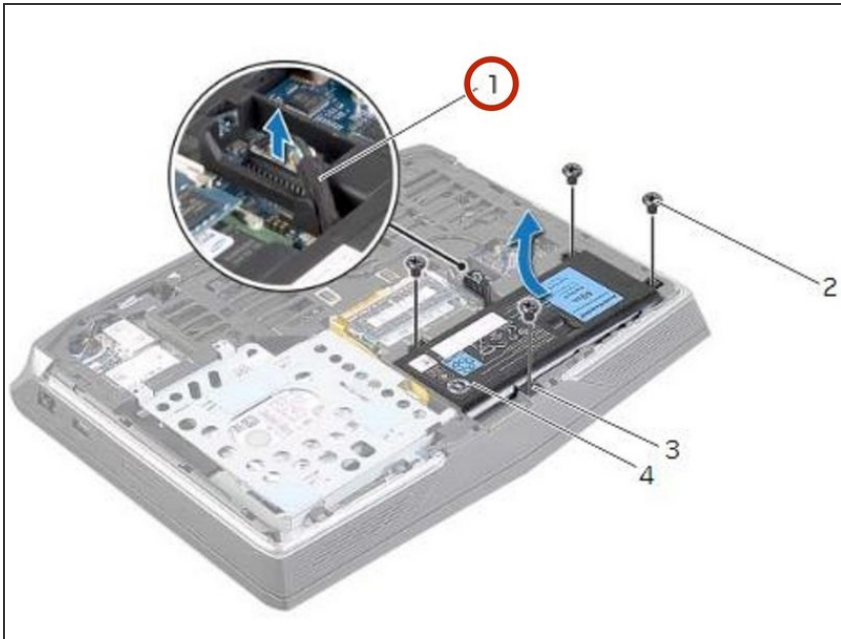
## Step 8 — Remove the Screws



- Remove the screws that secure the battery to the computer base.

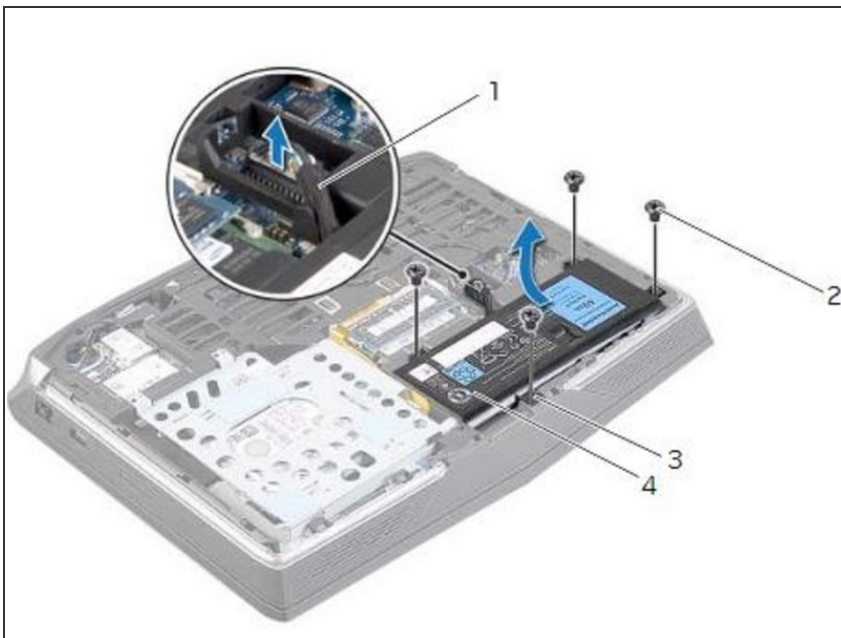


## Step 9 — Using the Battery Cable



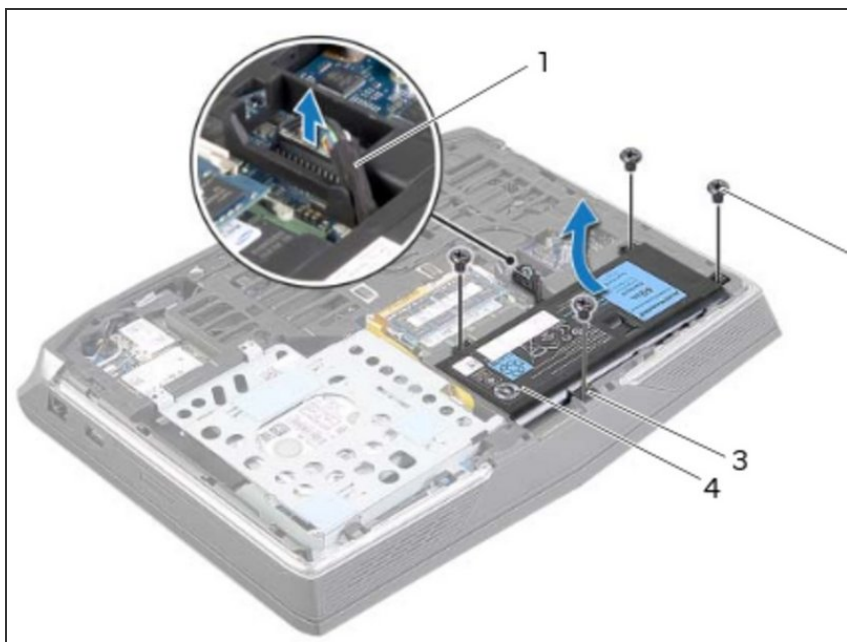
- Using the battery cable, lift the battery and release it from the tabs on the computer base.

## Step 10 — Turn the Computer Over



- Turn the computer over and open the display as far as possible.

## Step 11 — The Power Button



- Press and hold the power button for five seconds to ground the system board.

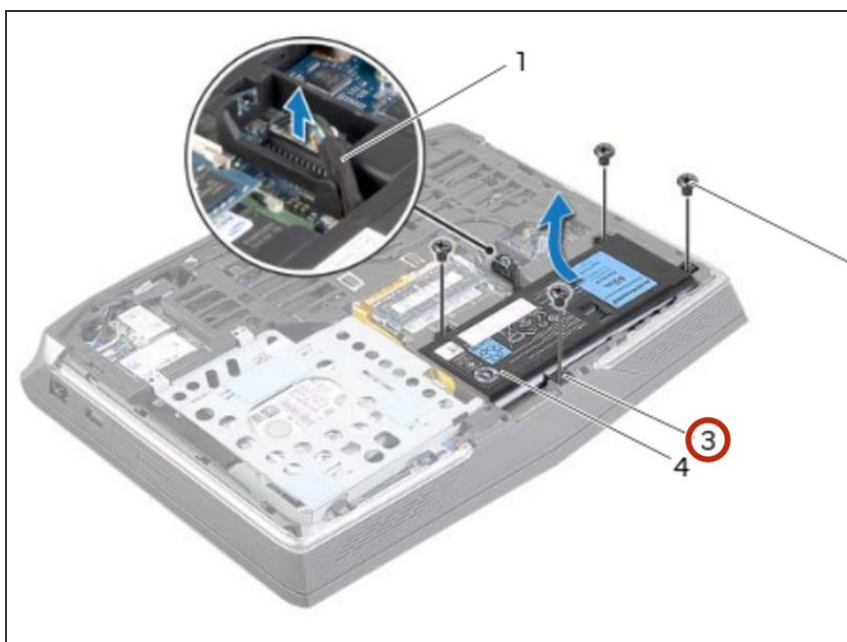
## Step 12 — Close the Display



- Close the display and turn the computer over.

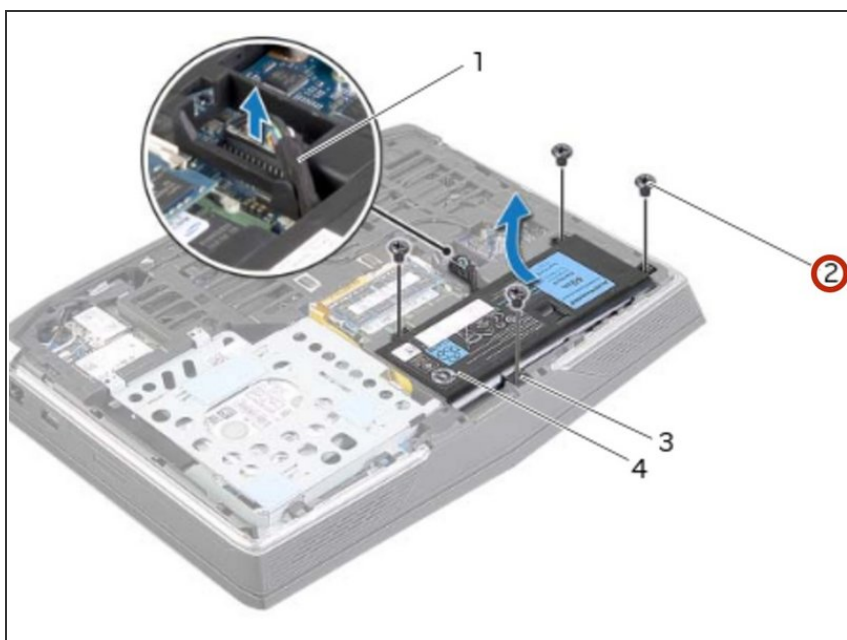


## Step 13 — Align the Tabs



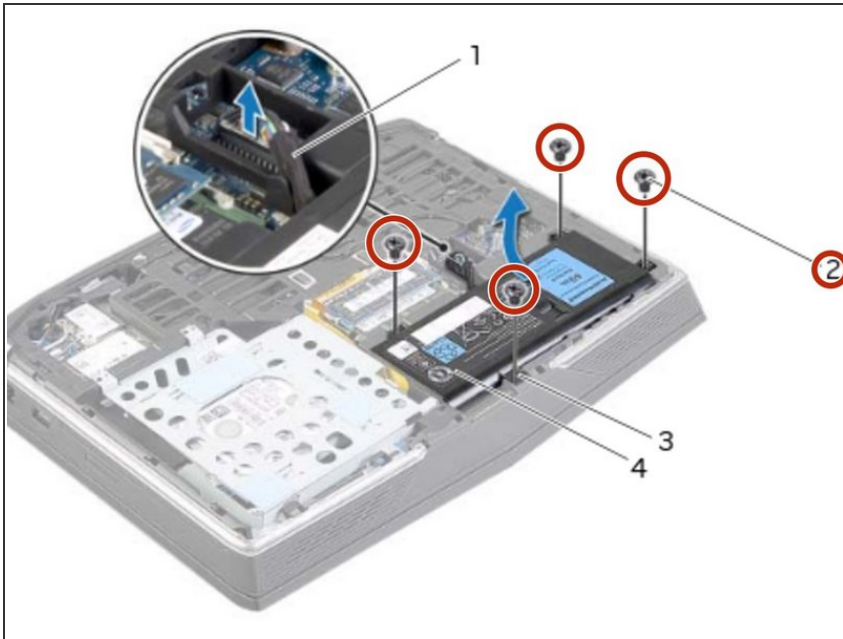
- Align the tabs on the **NEW** battery with the slots on the computer base.

## Step 14 — Align the Screw Holes



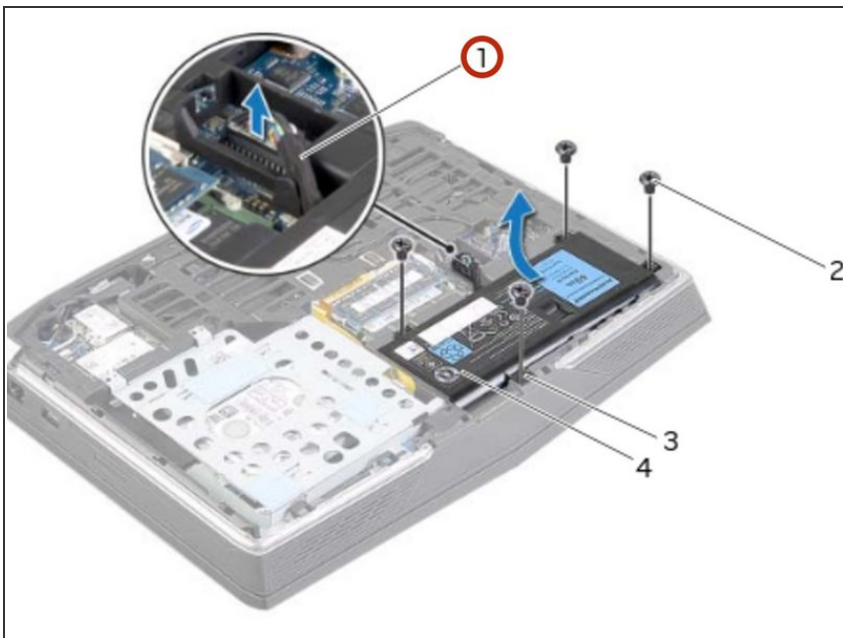
- Align the screw holes on the battery with the screw holes on the computer base.

## Step 15 — Replace the Screws



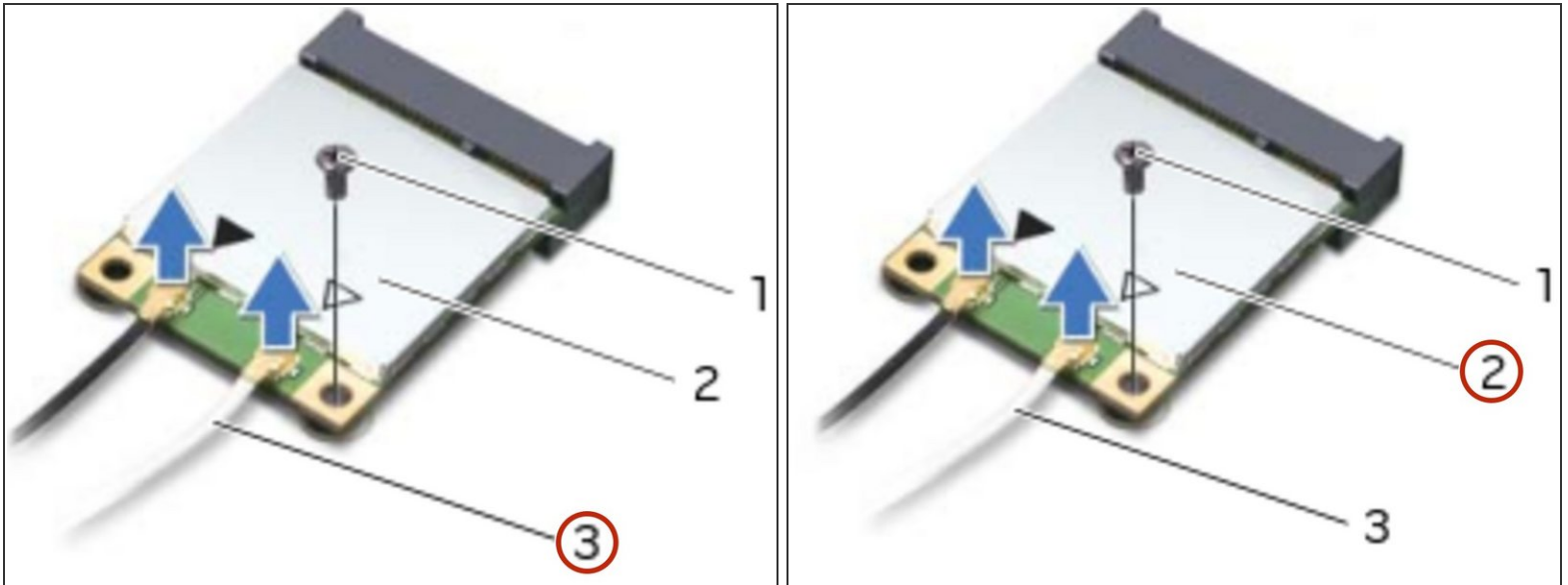
- Replace the screws that secure the battery to the computer base.

## Step 16 — Connect the Battery Cable



- Connect the battery cable to the system-board connector.

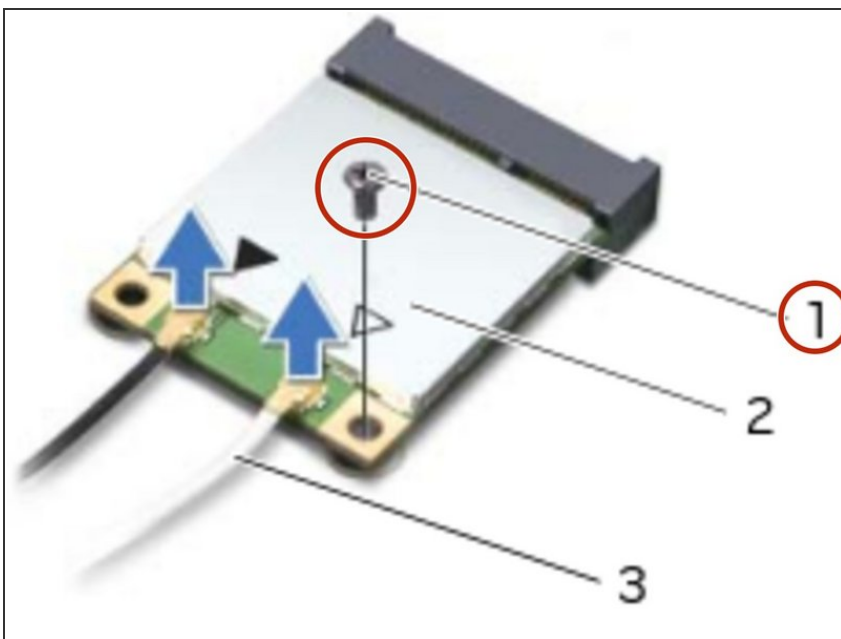
## Step 17 — Disconnect the Antenna Cables



**⚠ WARNING:** Before working inside your computer, read the safety information that shipped with your computer and follow the steps in [Before Working Inside Your Computer](#). After working inside your computer, follow the instructions in [After Working Inside Your Computer](#).

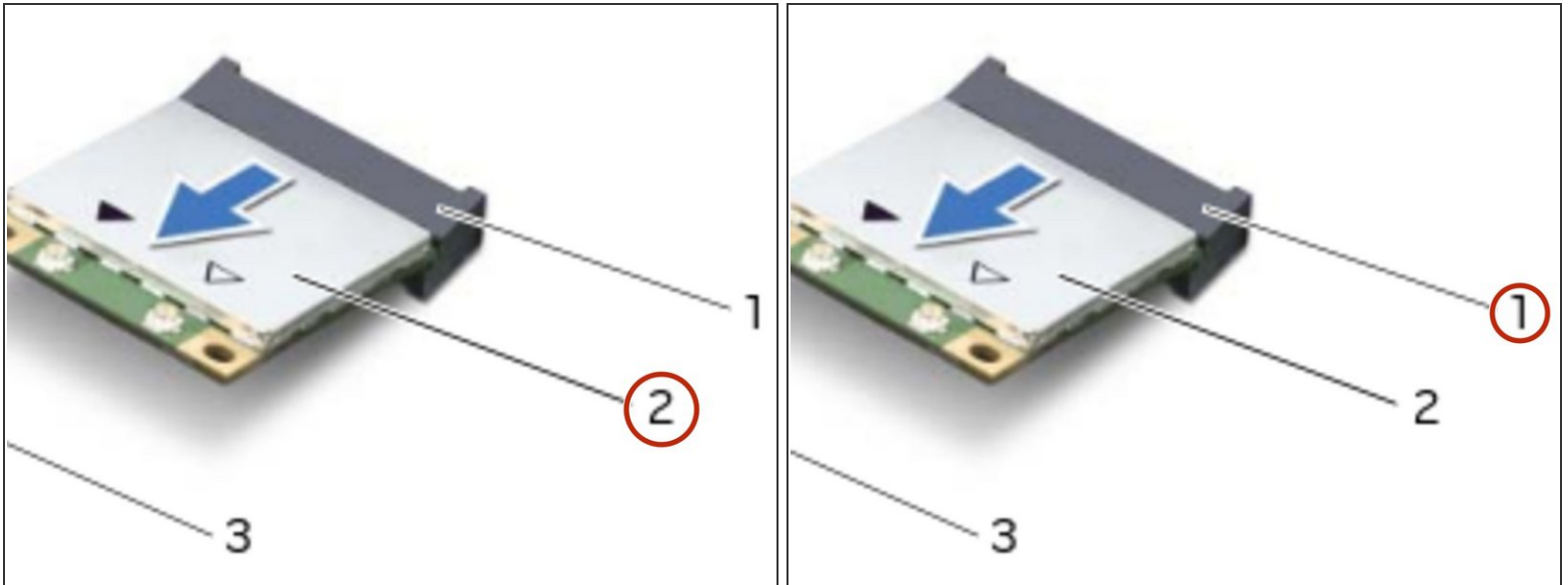
- Disconnect the antenna cables from the wireless mini-card.

## Step 18 — Remove the Screw



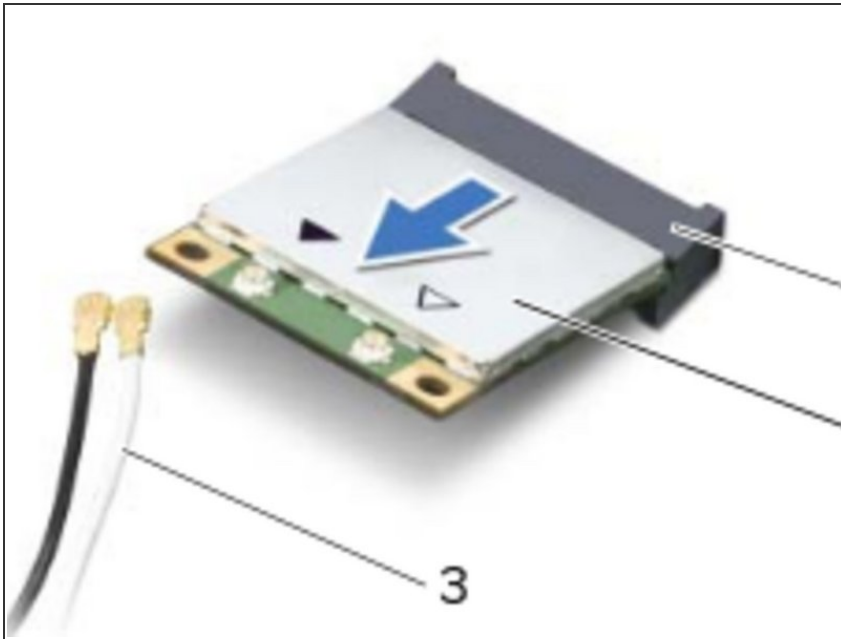
- Remove the screw that secures the wireless mini-card to the system board.

## Step 19 — Remove the Wireless-Mini Card



- Slide and remove the wireless-mini card from the system-board connector.

## Step 20 — Align the Notch



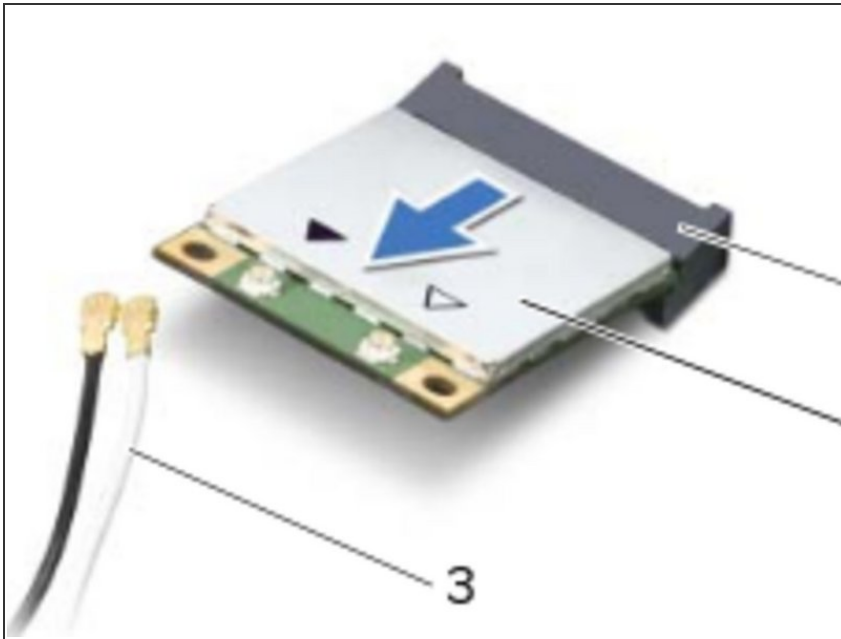
- Align the notch on the **NEW** wireless mini-card with the tab on the system-board connector.

⚠ CAUTION: Use firm and even pressure to slide the wireless mini-card into place. If you use excessive force, you may damage the connector.

⚠ CAUTION: The connectors are keyed to ensure correct insertion. If you feel resistance, check the connectors on the wireless mini-card and on the system-board connector, and realign the wireless mini-card.

⚠ CAUTION: To avoid damage to the wireless mini-card, never place cables under the wireless mini-card.

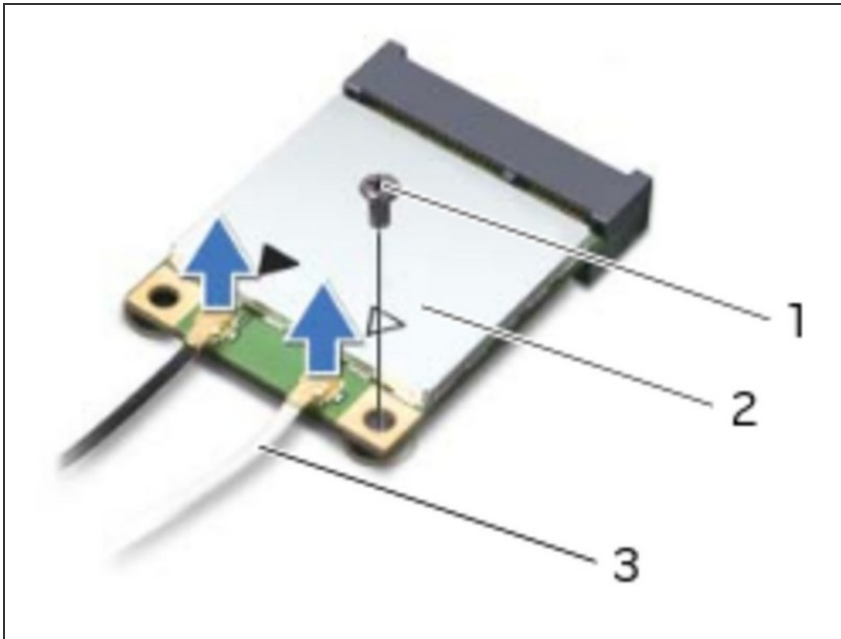
## Step 21 — Inserting the Wireless Mini-Card



- Insert the wireless mini-card at a 45-degree angle into the system-board connector.

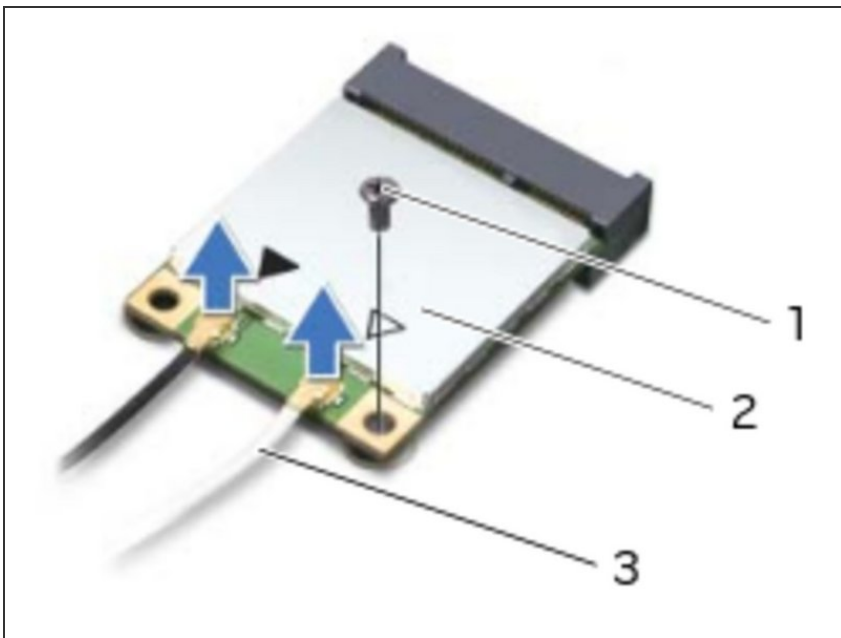


## Step 22 — Securing the Wireless Mini-Card



- Press the other end of the wireless mini-card down into the slot on the system board and replace the screw that secures the wireless mini-card to the system board.

## Step 23 — Connect the Antenna Cables



- Connect the antenna cables to the connectors on the wireless mini-card.

To reassemble your device, follow these instructions in reverse order.