



Samsung Galaxy S9 Teardown

Samsung Galaxy S9 Teardown done on March 9, 2018

Written By: Michael Degnan



INTRODUCTION

Breaking news! Updated S9 Teardown Below!

There's a new Samsung Galaxy flagship phone in the world, the S9—and though you may have to squint to tell it apart from its predecessor, we're here to squint into its innards. It's time to tear down the Galaxy S9! Grab a spudger and let's poke around inside.

Were you hoping for something a little bigger? Try our [S9+ teardown](#) on for size.

Geek out with us on [Facebook](#), [Twitter](#), or [Instagram](#), where we plug in with all our fellow tinkerers.



TOOLS:

- [Heat Gun](#) (1)
 - [Suction Handle](#) (1)
 - [iFixit Opening Picks set of 6](#) (1)
 - [Spudger](#) (1)
 - [Phillips #00 Screwdriver](#) (1)
 - [Tweezers](#) (1)
 - [Halberd Spudger](#) (1)
 - [iFixit Adhesive Remover \(for Battery, Screen, and Glass Adhesive\)](#) (1)
 - [iSlack](#) (1)
-

Step 1 — Teardown



- This smaller version of the S9+ gets a big hardware upgrade. Let's take a look:
 - Notchless 5.8" AMOLED Display with resolution of 2960 × 1440 (~570 ppi)
 - Qualcomm Snapdragon 845 or Samsung's own Exynos 9810, depending on location
 - 12 MP OIS dual-aperture main camera—f/1.5 and f/2.4 modes—plus an 8 MP selfie cam
 - Headphone jack and microSD slot
 - IP68 water/dust-proofing rating
 - Android 8.0 Oreo

Step 2



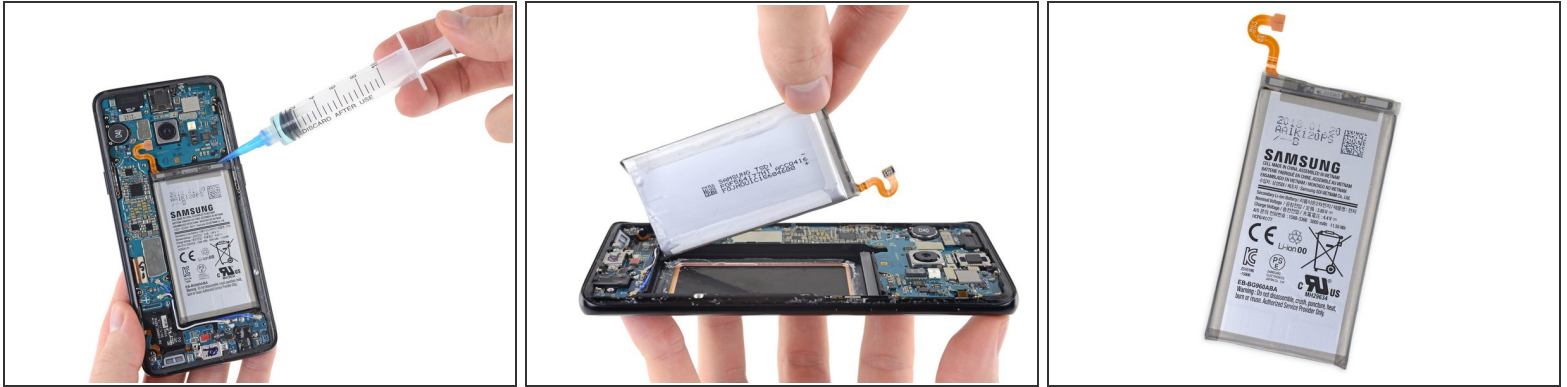
- We start with a sneak peek—X-ray intel provided by our co-conspirators at [Creative Electron](#).
- If you liked the S8, we've got good news—Samsung agrees with you. The design seems *almost* totally unchanged, save for the new (and better) fingerprint sensor location.
 - Our S9 cozies up to its S8 ancestor on the left (reassembled from [our 2017 teardown](#)) and its S9+ sibling on the right (still sore from [our teardown last weekend](#)).
- Props to Samsung for keeping the headphone jack and expandable storage, all while maintaining IP68 protection.
- ❗ Are these things new? No. Are they still good? We say yes.

Step 3



- Getting inside a Galaxy phone hasn't gotten any easier lately, but at least the procedure is familiar:
 - Step 1: get it hot.
 - Step 2: add more heat.
 - Step 3: suction and slice, and don't hit that fingerprint sensor cable that you can't see.
- You've probably heard us complain about this before, so we'll just add this: yes it's risky and tedious, but at least if you crack the back glass, you stand a chance of being able to replace it economically. (Our favorite fruit company is [still working on that one.](#))

Step 4



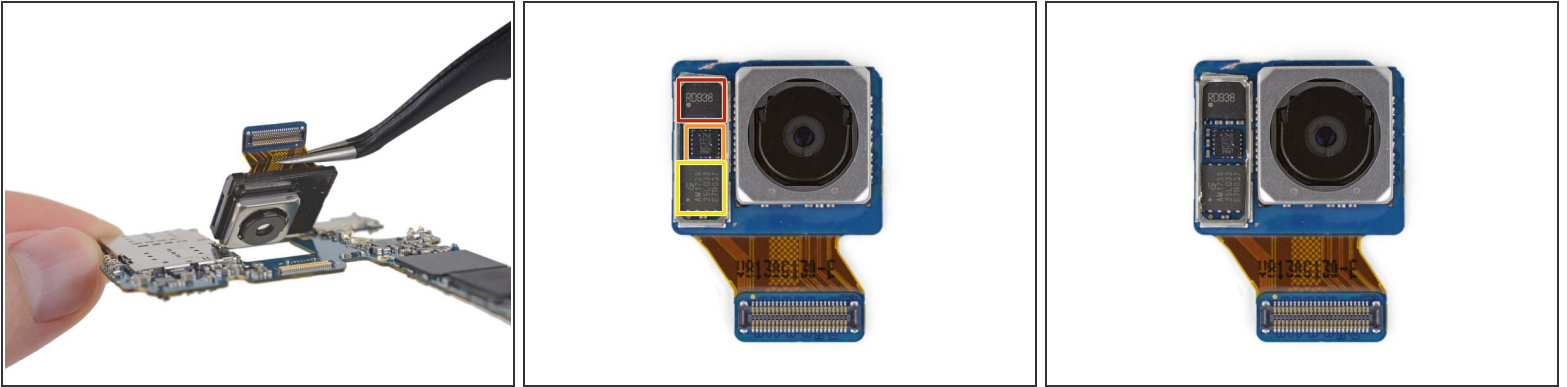
- As if afraid the battery might run away, Samsung really didn't hold back on the glue.
- Fear not! We've [seen this before](#), and developed a [secret formula](#) for just this sort of sticky situation.
- ☑ Remember when Samsung [made fun of iPhones for having a sealed-in battery](#)?
 - Remember when Samsung made a waterproof smartphone with a battery that [you could swap in 10 seconds with no tools](#)?
- Although smaller than the [S9+](#), the S9's battery is no slouch, and packs 3000 mAh at 3.85 V, for 11.55 Wh.
- This is exactly the same as the [S8](#), and a little larger than competitors like the Pixel 2 (10.39 Wh) and [iPhone X](#) (10.35 Wh).

Step 5



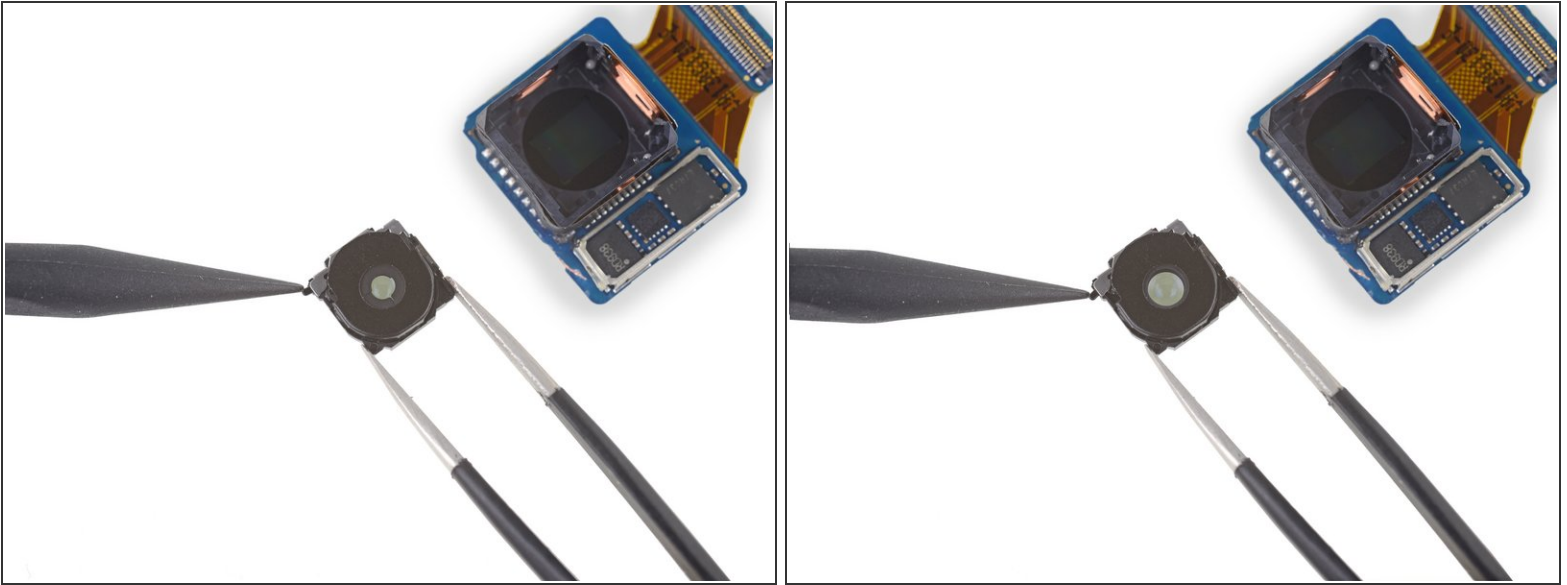
- Next we turn our attention to the brains of the phone, and after removing a few friendly Phillips screws, the motherboard slides free.
- ❗ If this board already looks a bit worse for wear, that's because we previously removed the EMI shields for our video teardown. Give yourself a pat on the back if you noticed!
- Near the top of the board we get a look at the S9's new heart rate and blood pressure sensors, a step up from the standard heart rate sensor seen on many phones.
- ❗ This new blood pressure hardware works alongside a [Samsung and UCSF co-developed research app](#) to give users info about stress levels and blood pressure.
- Say hello to *Dr. Bixby*.

Step 6



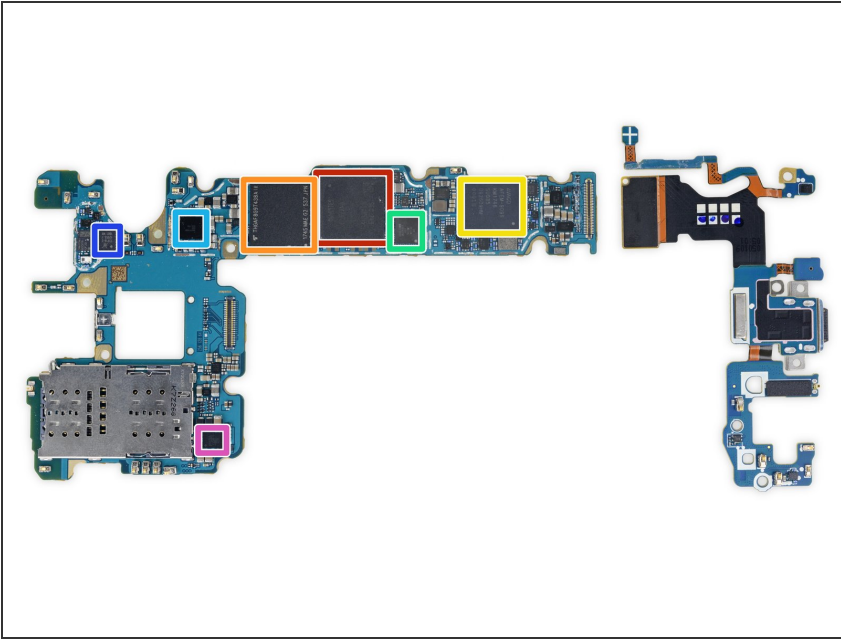
- Compared to some flagships, the S9 has twice the f-stops and half the sensors.
- Not shown: Samsung's highly touted 2 Gbit LPDDR4 DRAM, [layered right underneath the image sensor](#).
- Shown: Some other mystery chips.
 - RD938 likely OIS driver
 - STMicroelectronics [L2G2IS](#) 2-axis OIS gyroscope
 - GigaDevice [GD25LQ32](#) 32 Mb serial flash

Step 7



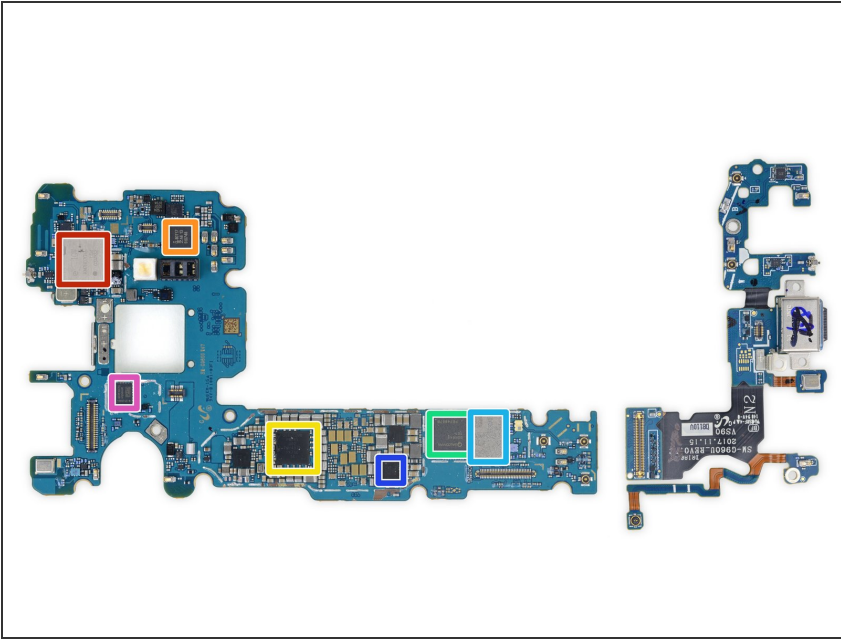
- We want to try out the S9's new dual aperture, but using the camera app seems a little too conventional.
- After a bit of disassembly, a spudger seems to do the trick instead.
 - This may seem goofy, but the S9 really will have a small actuator that mechanically opens and closes the aperture—a mechanical bit that can fail.
- Removing the lens also reveals the image sensor. Taking a closer look we see...yep that's an image sensor. Maybe some X-rays can show us that DRAM...

Step 8



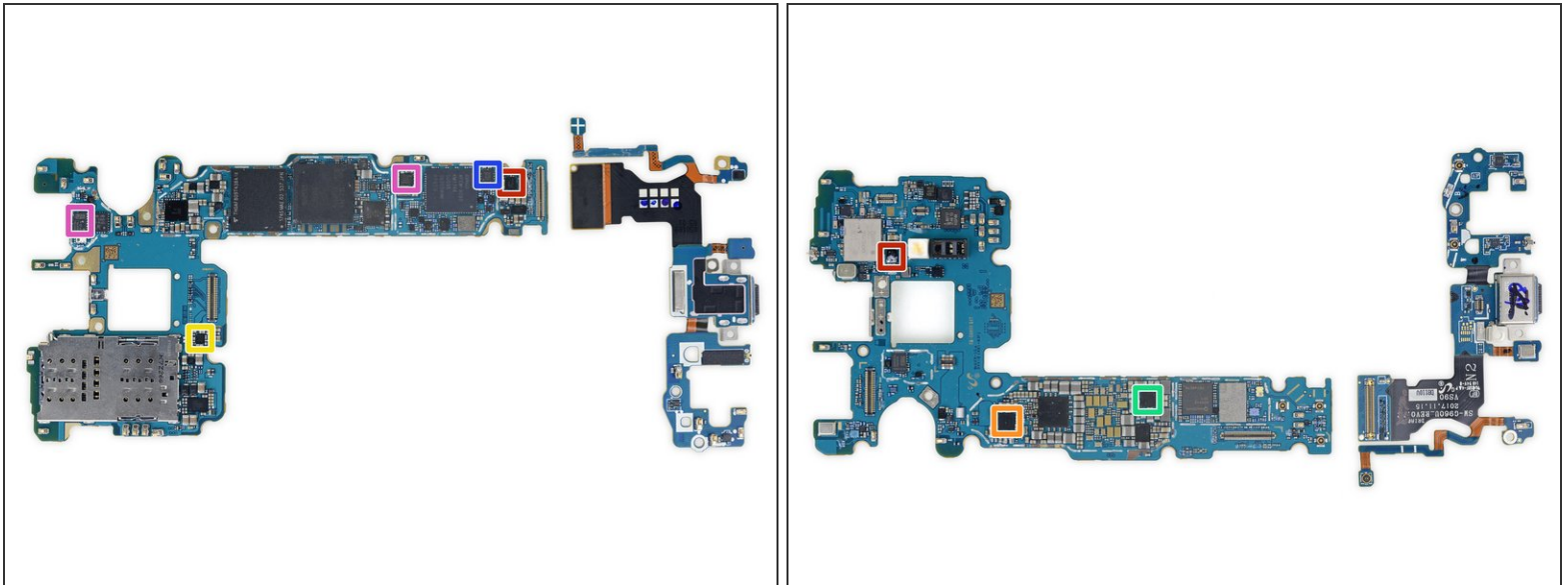
- Lets take a look at the chips that power all that fancy hardware:
 - Samsung [K3UH5H5OMM-AGCJ](#) 32 Gb (4 GB) LPDDR4X DRAM, layered over a [Qualcomm Snapdragon 845](#)
 - Toshiba [THGAF8G9T43BAIR](#) 64 GB UFS (NAND flash + controller)
 - Avago AFEM-9096 front end module
 - Qualcomm Aqstic [WCD9341](#) audio codec
 - Maxim MAX77705F PMIC
 - Skyworks [SKY13716-1](#) low band front end module
 - IDT P9320S wireless power receiver likely similar to the [P9320](#)

Step 9



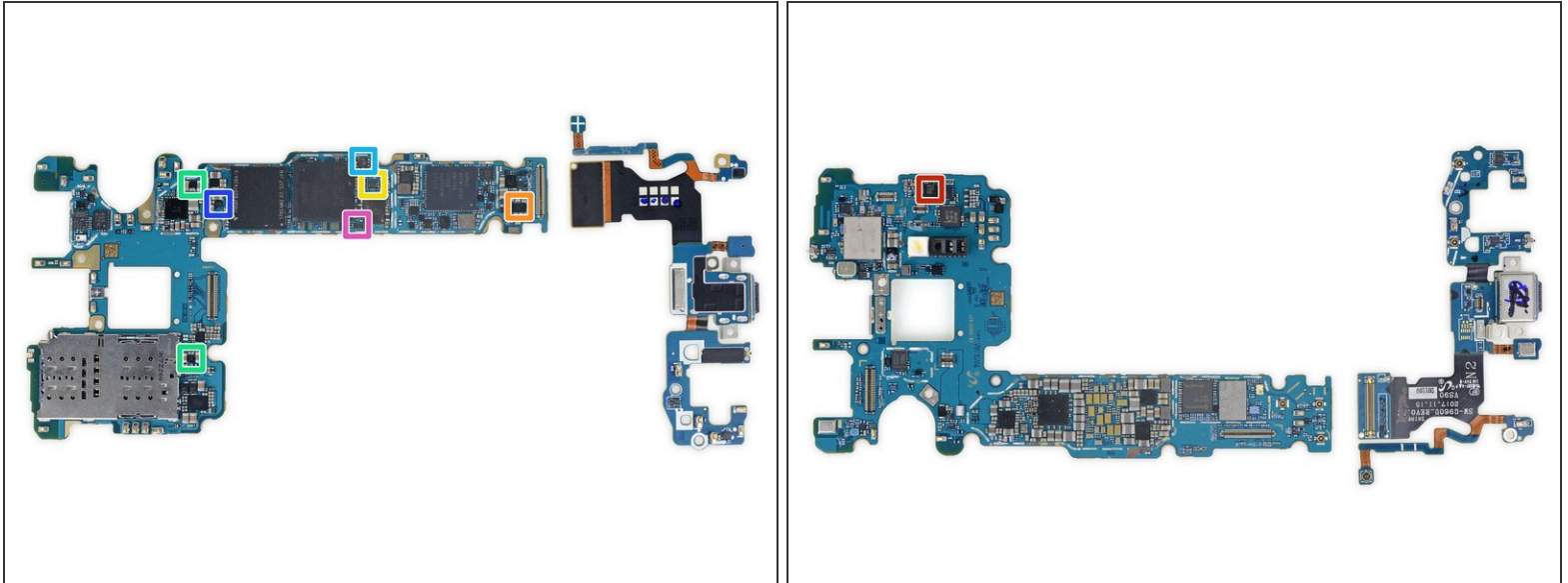
- There's another gathering of integrated circuits on the flip side:
 - Murata KM7N07016 Wi-Fi/Bluetooth module
 - NXP [PN80T](#) NFC controller
 - Qualcomm PM845 (likely PMIC)
 - Qualcomm SDR845 RF transceiver
 - Hard to make out, but we think this is likely the same Skyworks [SKY78160-11](#) front-end module we found in the S9+
 - Qualcomm PM8005 PMIC
 - Qualcomm QDM3870 high-band diversity front-end module

Step 10



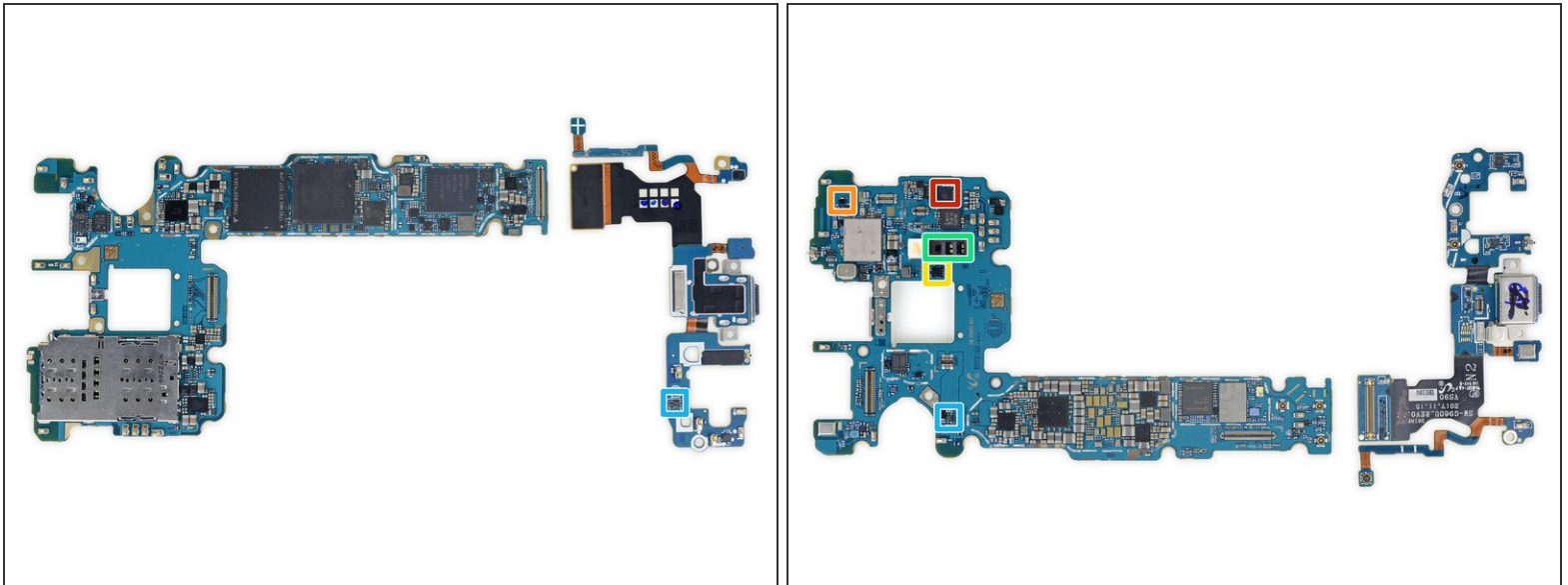
- IC Identification, pt. 2:
 - Maxim Integrated MAX98512 audio amplifier (1st one marked is unconfirmed)
 - Samsung S2MPB02 camera power management
 - Samsung S2MPB03 camera power management
 - Samsung S2DOS05 display power management
 - Qualcomm D5319 mid-band diversity front-end module
 - RDA Microelectronics RDA6213N FM transceiver (likely)
 - Qualcomm [QET4100](#) envelope tracker

Step 11



- IC Identification, pt. 3:
 - NXP Semiconductor [PCAL6524](#) 24-bit I/O expander
 - ON Semiconductor FPF3688UCX load switch
 - Vishay [DG2730](#) 2-port, 480 Mbps USB 2.0 DPDT analog switch
 - ON Semiconductor [FAN48618BUC53X](#) 1 A boost regulator
 - Richtek [RT8010GQW](#) 1 A step-down DC-DC converter
 - Texas Instruments boost converter (likely)
 - NXP Semiconductor [NCX2200](#) comparator

Step 12



- IC Identification, pt. 4 (sensors):
 - STMicroelectronics [LSM6DSL](#) 3-axis accelerometer/gyroscope
 - AKM Semiconductor AK09916C 3-axis electronic compass
 - STMicroelectronics [LPS22HB](#) pressure sensor
 - heart rate sensor
 - Ablic (formerly Seiko Instruments) [S-5712CCDL1-I4T1U](#) hall sensor

Step 13



- From "S9" to "See ya later!" This teardown is toast!
- ★ We skipped a lot of the familiar details—if you haven't already, you can get the deeper dive into some similar Samsungs like the [S9+](#), [S8](#), and [S8+](#).

Step 14 — Final Thoughts

REPAIRABILITY SCORE:



- The Samsung Galaxy S9 earns a **4 out of 10** on our repairability scale (10 is the easiest to repair):
 - Many components are modular and can be replaced independently.
 - The battery replacement is technically possible, but accessing it is an unnecessary challenge.
 - Glued-down glass both front and back means greater risk of breakage, and makes repairs difficult to start.
 - Screen repairs require a lot of disassembly while battling tough adhesive.