



# Repairing a Nova waffle iron

Make the very best waffles with grandma's...

Written By: Pierre

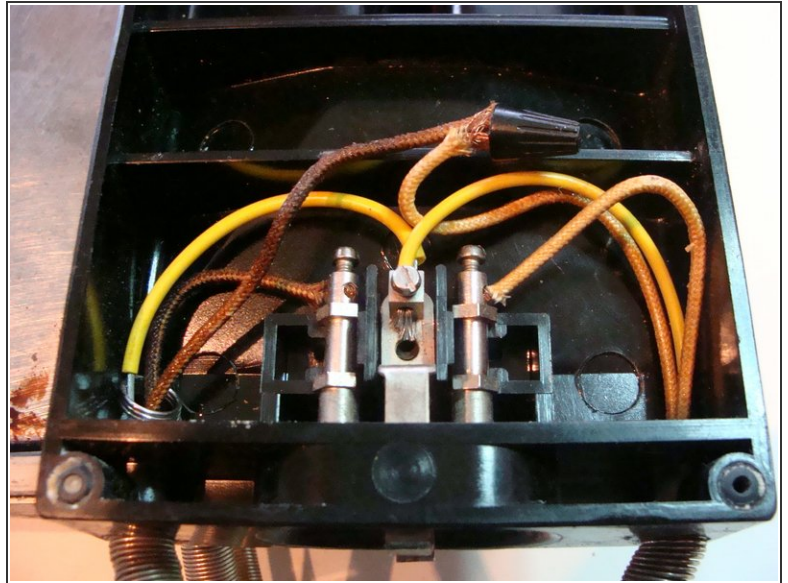


# INTRODUCTION

Make the very best waffles with grandma's waffle iron.

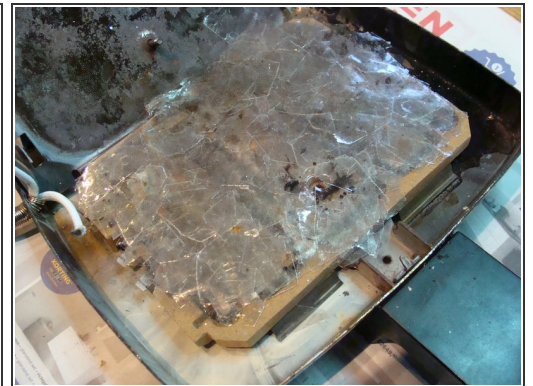
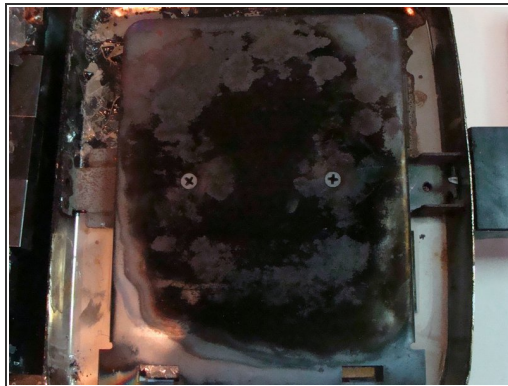
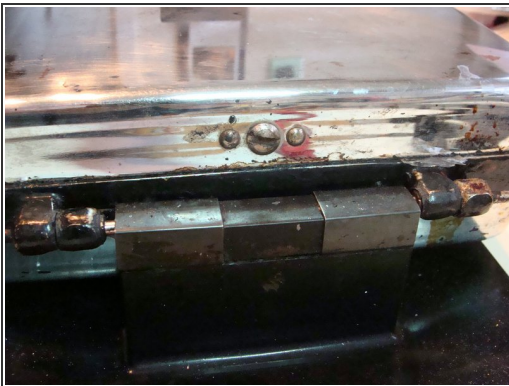


## Step 1 — Check the electrical connections in the socket



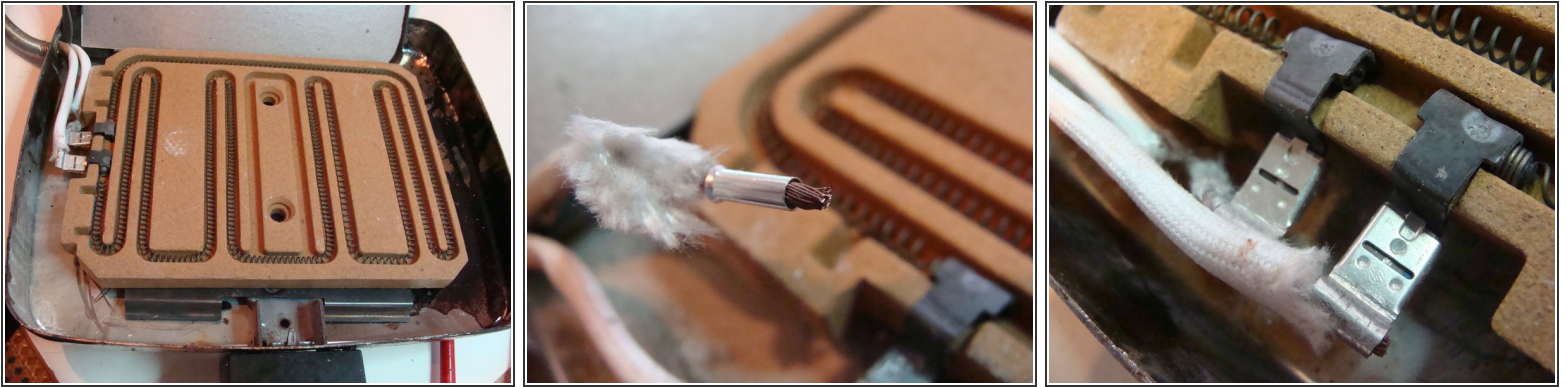
- Open the socket to check the connections.
- This wire connection should be reconnected.

## Step 2 — Open one side of the device



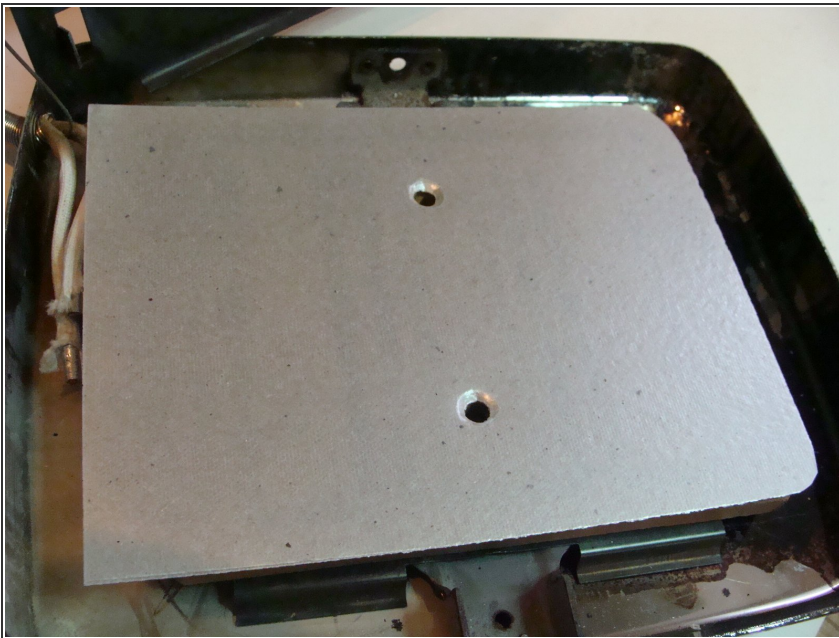
- Open one side of the device.
- Remove the protective plate.
- Remove the old mica-flakes.

### Step 3 — Renew the cable lugs



- Install new cable ends and cable lugs.

### Step 4 — Replace the mica-sheet



- Cut new mica sheets to size. These form an electrical insulator and at the same time a heat conductor with the protective plate.
- Assemble the protective plate and mount this side back on the waffle iron.
- Repeat these steps on the other side of the waffle maker.



## Step 5 — Put the waffle iron back together



- Follow the instructions in reverse order to reassemble the waffle iron.
- Now get to work... baking waffles the grandmotherly way! Enjoy your meal!

To reassemble the device, follow these instructions in reverse order.