



HP Envy x360 m6-aq005dx Hard Drive Replacement

The hard drive is the main storage unit of the...

Written By: Matthew Martin



INTRODUCTION

The hard drive is the main storage unit of the laptop. It is the component that stores all of the data of the device. This guide will show the proper removal of the laptop's hard drive.

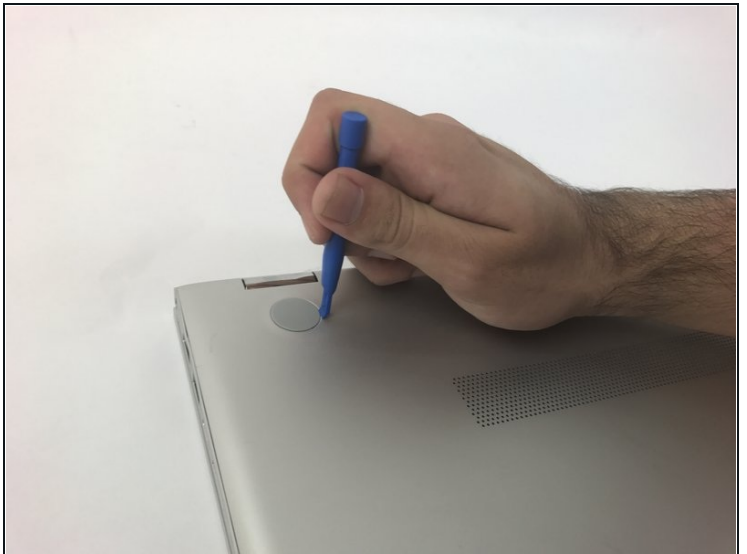
TOOLS:

[JIS #1](#) (1)
[iFixit Opening Tool](#) (1)
[T5 Torx Screwdriver](#) (1)
[Tweezers](#) (1)

PARTS:

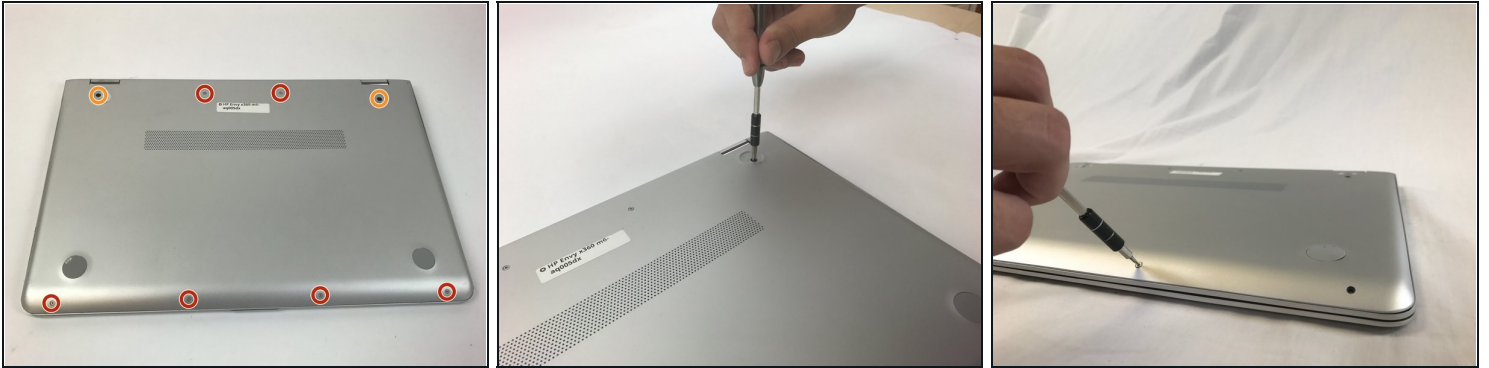
[Crucial MX500 1 TB SSD](#) (1)
[Crucial MX500 250 GB SSD](#) (1)
[Crucial MX500 500 GB SSD](#) (1)
[2 TB SSD](#) (1)

Step 1 — Back Panel



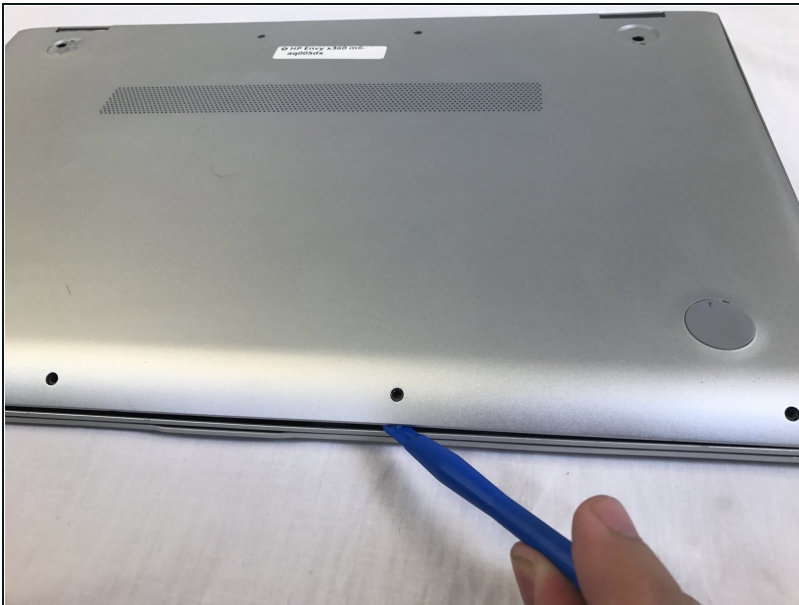
- Use the plastic opening tool to remove the gray rubber pads on the bottom of the laptop. For our device we only needed to remove the two at the top.

Step 2



- Use a Torx T5 screwdriver to remove the six 5.1 mm screws.
- Use a JIS #1 screwdriver to remove the two 7.2mm screws.

Step 3



- Use a plastic opening tool to pry open the case. Go slowly around the edge. You will hear popping noises, such are due to popping open the small joints that keep the cover attached.

Step 4 — Battery



- Use a JIS #1 screwdriver to remove the six 4.7 mm screws.

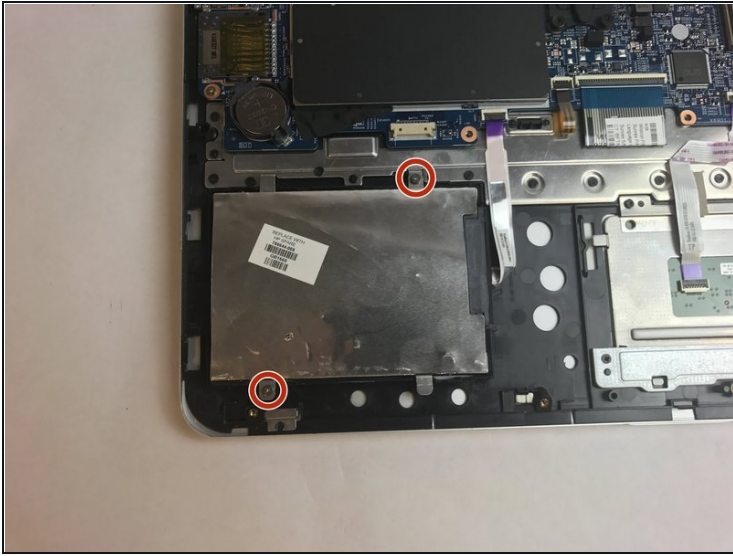
Step 5



⚠ Battery might cause a small electric shock.

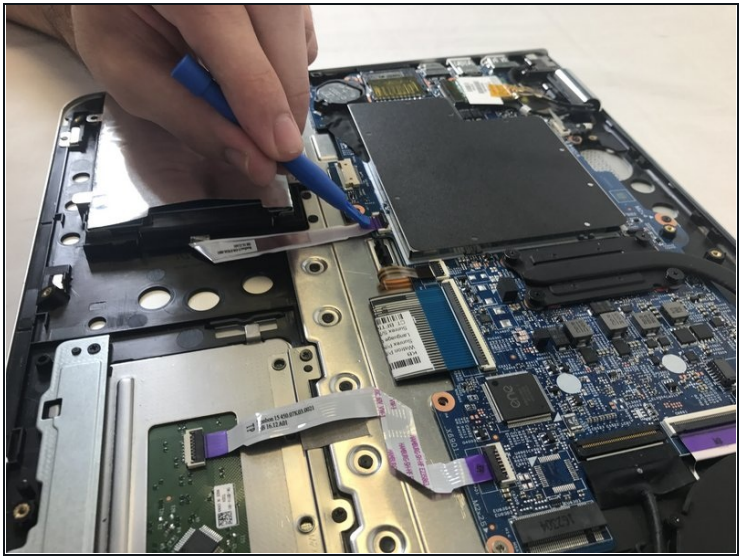
- Use [tweezers](#) to disconnect the battery from the motherboard.

Step 6 — Hard Drive



- Use a JIS J1 bit to remove the two 4.6 mm screws.

Step 7



- The red square is around the ribbon cable.
- Use the plastic opening tool to open the black security connector. then pull the ribbon cable to disconnect it from the motherboard.

To reassemble your device, follow these instructions in reverse order.

