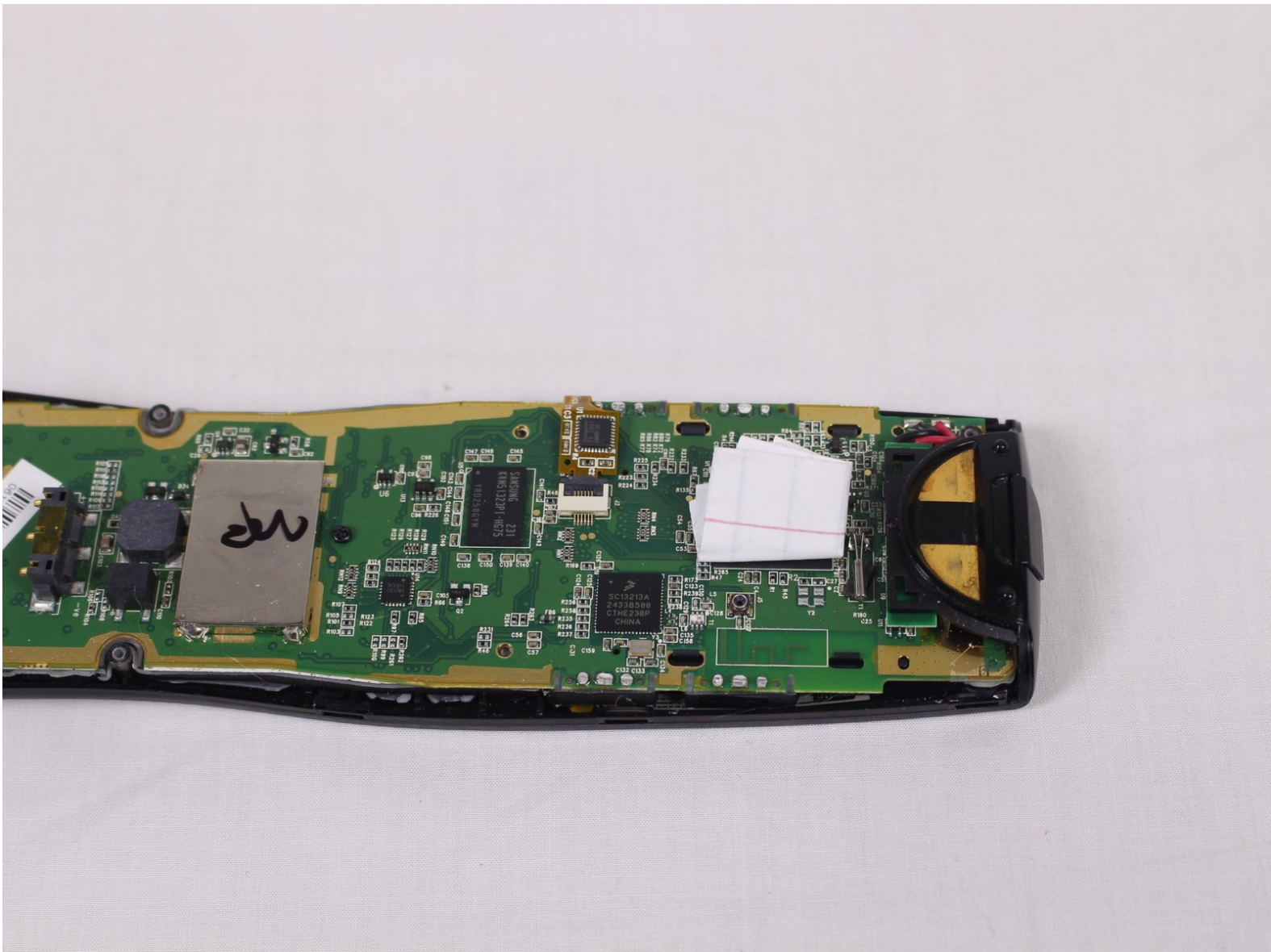




# How to Stabilize the Logitech Harmony 900 Motherboard

This guide teaches you how to stabilize the motherboard in the Logitech Harmony 900 to fix the issue of it not turning on.

Written By: Tyler Hanks



This document was generated on 2020-11-28 06:17:25 AM (MST).

---

## INTRODUCTION

This guide will show you how to stabilize the motherboard of the Logitech Harmony 900 by placing a shim on the CPU. This guide is designed to solve the problem of device not starting due to bad CPU connections.



### TOOLS:

- [Credit Card / Plastic](#) (1)
  - [Tweezers](#) (1)
  - [Phillips #0 Screwdriver](#) (1)
-

## Step 1 — Battery



- Press the oval shaped button on the lower back of the remote to release the battery cover.
- While pressing the button, remove the cover.

## Step 2



- Push the battery in, pull it up, and slide it out.

## Step 3 — Motherboard



- Using tweezers, peel off the sticker located under the battery cover to reveal two screws.

## Step 4



- Locate and unscrew the four 50mm screws using the Philips #0 screwdriver.



## Step 5



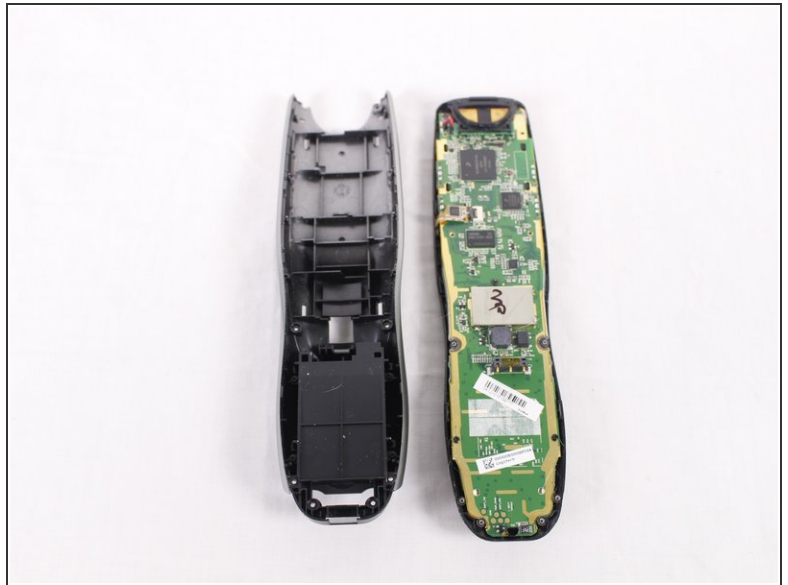
- Use a credit card to pry the black, plastic, back cover off of the device.
- ⓘ You may need to get the process started with a metal prying tool before you start using the credit card.

## Step 6



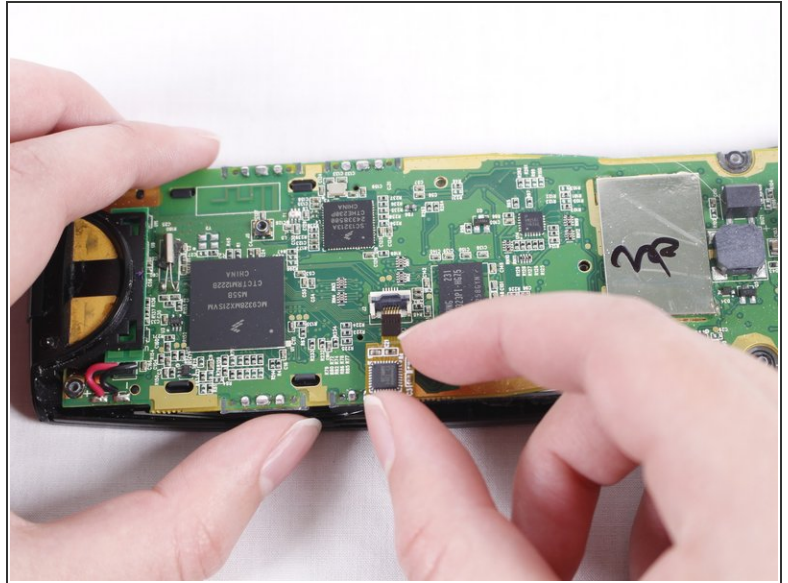
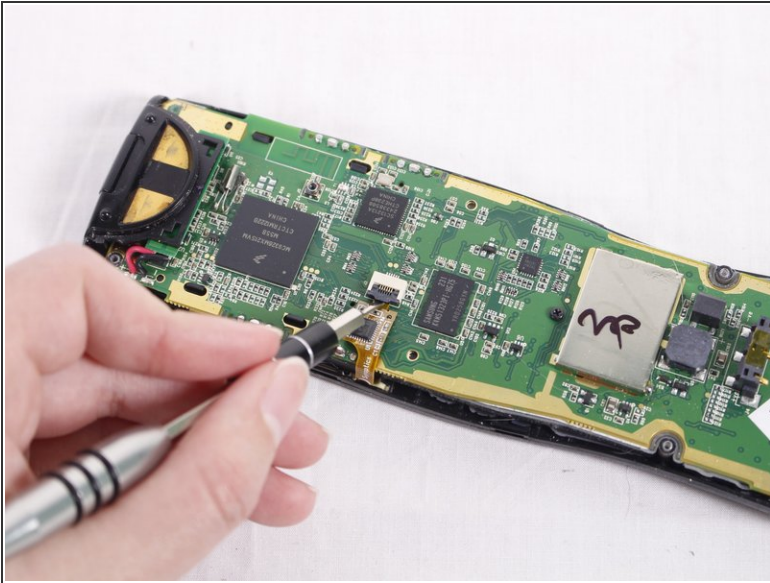
- Locate the three 50mm screws on the back of the remote and remove them using the Phillips #0 screwdriver.

## Step 7



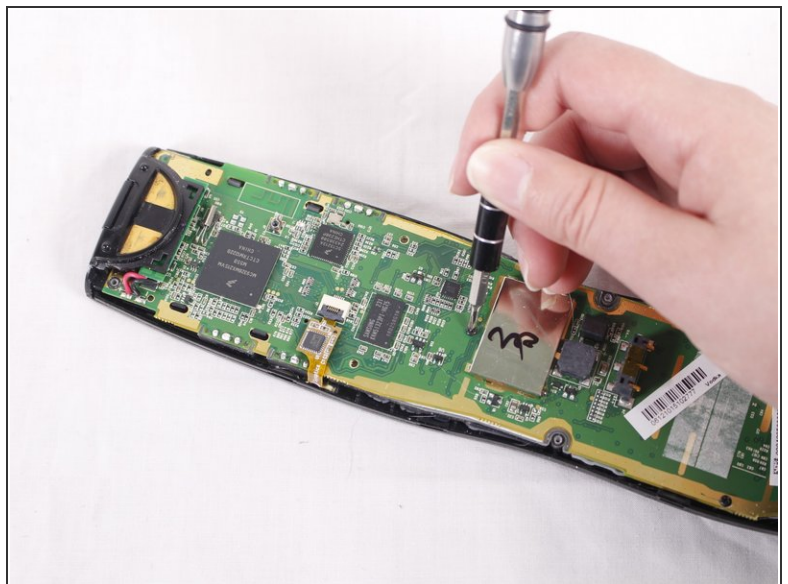
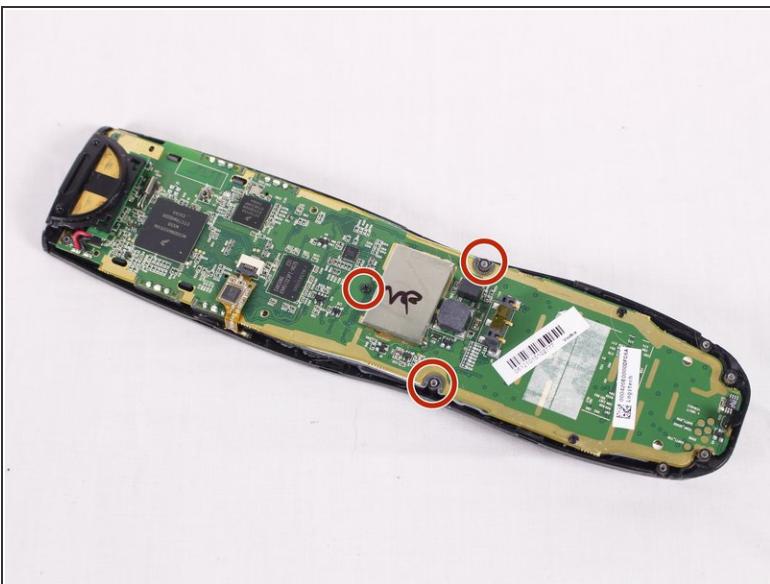
- Pry the black, front face of the remote from the back silver part by inserting a credit card in between and sliding down.
- ⓘ Again, you may need to use a metal prying tool to get the separation started.

## Step 8



- When you look at the circuit board, you should see a ribbon attaching the board to the plastic casing.
- A little lever is holding the ribbon in place. Lift the lever with your nail or a 2.5mm flat-head screwdriver. Move the ribbon away from the circuit board.

## Step 9



- Using the Philips #0 screwdriver, remove the three 50mm screws from the circuit board.



## Step 10



- Using your hands, carefully separate the motherboard from the rest of the remote.

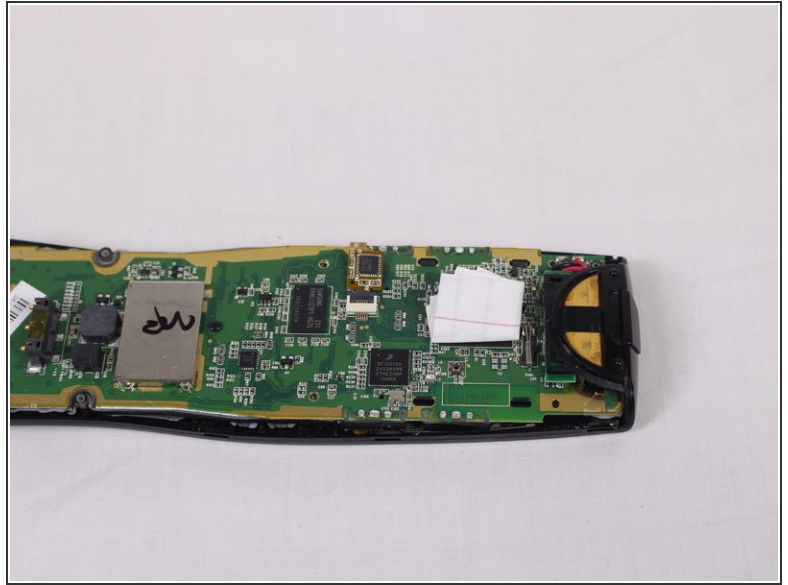
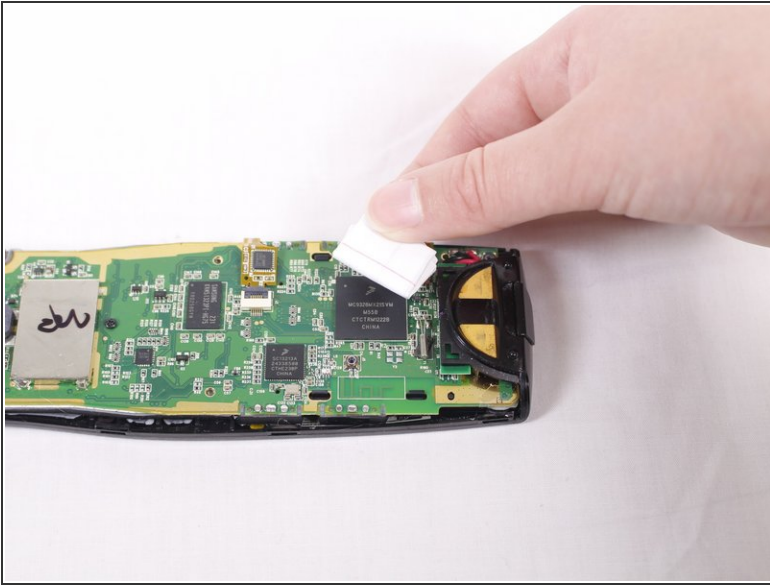
## Step 11 — How to Stabilize the Logitech Harmony 900 Motherboard



- Fold a small piece of paper several times until you have a shim about the size of a penny.



## Step 12



- Place the shim on the CPU, which is the top leftmost black box on the motherboard.

To reassemble your device, follow these instructions in reverse order.