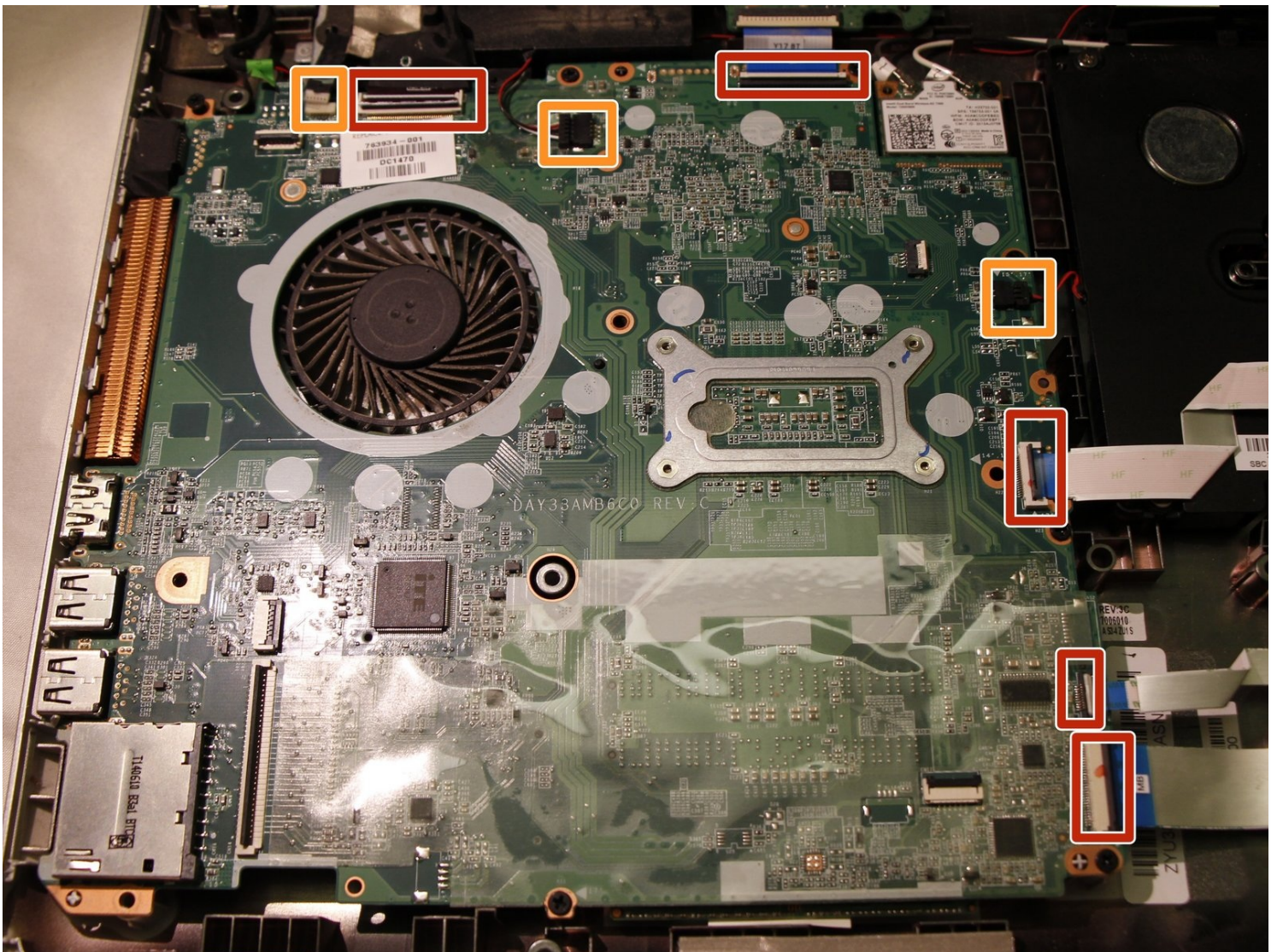




# HP Envy TouchSmart m7 k010dx Motherboard Replacement

This guide will walk you through the process of...

Written By: Owen Ou



# INTRODUCTION

This guide will walk you through the process of replacing a broken motherboard in the HP Envy TouchSmart m7 k010dx.

---

## TOOLS:

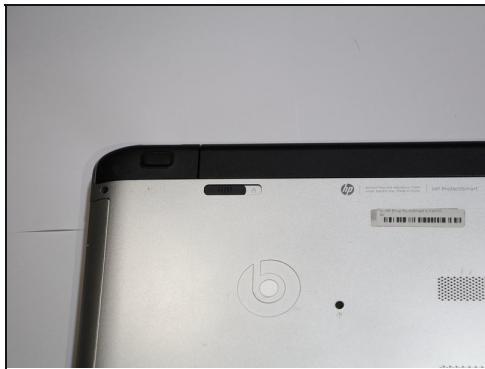
[Plastic Cards](#) (1)  
[iFixit Opening Tool](#) (1)  
[Phillips #0 Screwdriver](#) (1)  
[JIS #000 Screwdriver](#) (1)  
[Spudger](#) (1)

## PARTS:

[Replacement motherboard](#) (1)

---

## Step 1 — Battery



- Turn your computer over so that the bottom is facing up.
- Slide the left black switch towards center.
- You should see an unlock image exposed to the left of switch if done correctly.

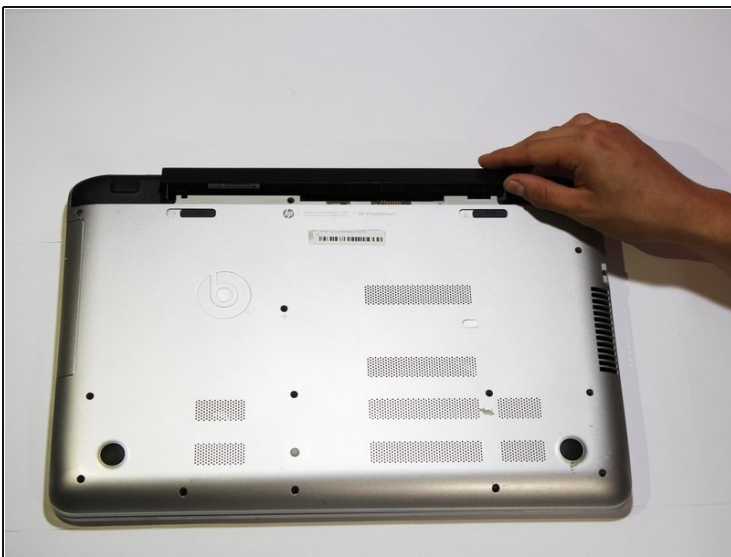


## Step 2



- Slide the right black switch towards center to release the battery.

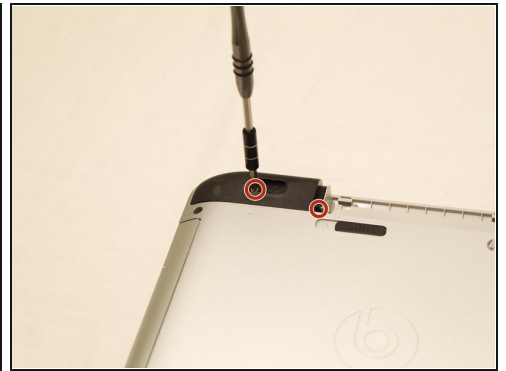
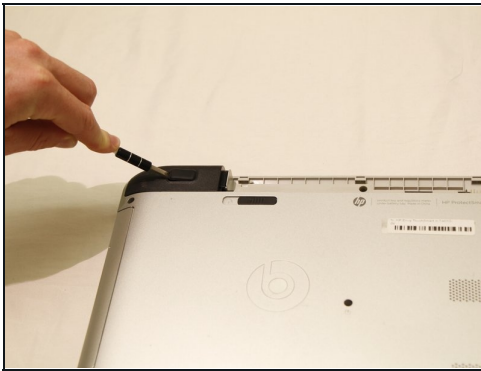
## Step 3



- Pivot the loose edge of the battery closes to you by pushing it toward the back of the computer.
- The battery should slide out freely.

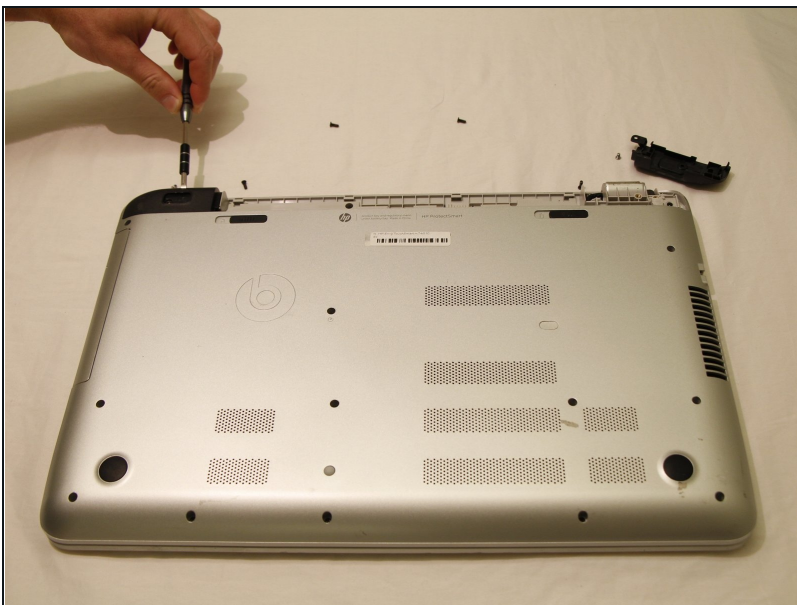
⚠ If battery is not pivoted before sliding out, you risk breaking interlocking tabs on the battery or computer.

## Step 4 — Keyboard



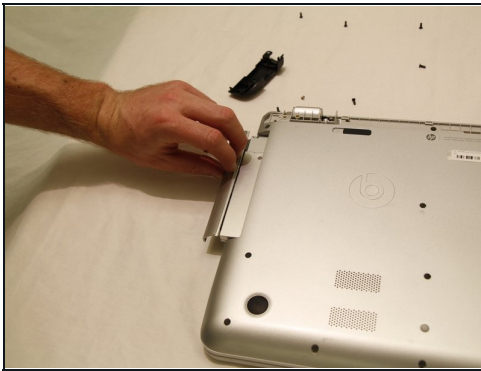
- With the computer turned over use a nylon spudger to pry the rectangular pads off to reveal two hidden screws.
- Using a Phillips #0 screwdriver, remove the screw that is beneath the black rubber pad, as well as the other holding down the black corner plastic pieces on both the left and right sides.

## Step 5



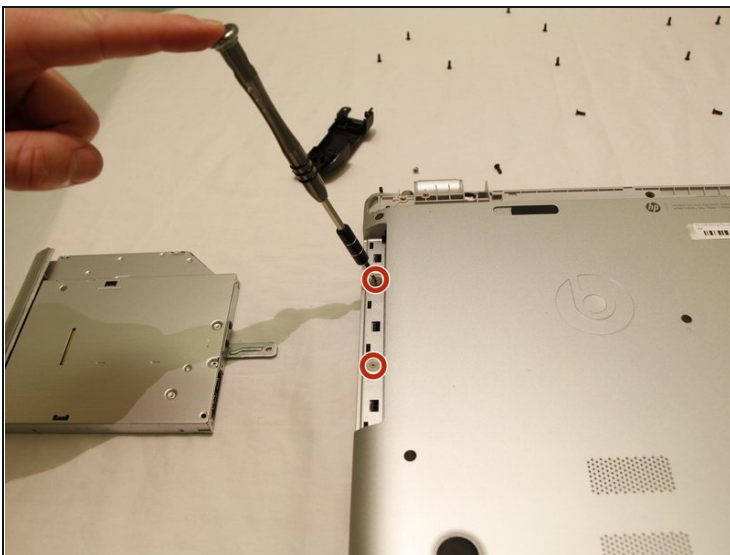
- Use a plastic opening tool to pop the corners off by wedging between casing. Do this for both legs as depicted in the picture.

## Step 6



- Using the Phillips #0 screwdriver, remove the screw in the center of the computer, and to the right of the Beats logo.
- Use your fingernails to pull out the optical drive. It will have some resistance to start, but will come out easily afterwards.

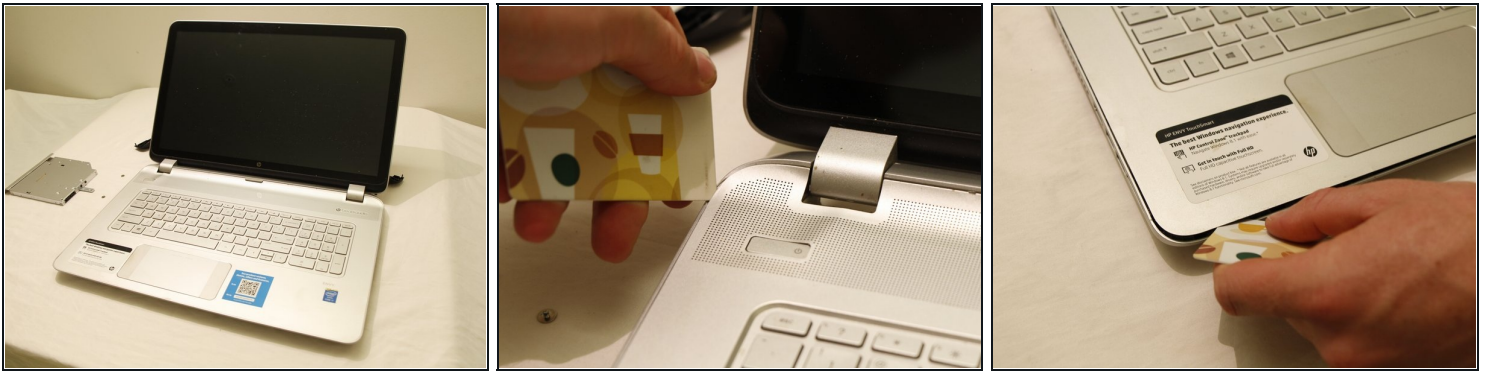
## Step 7



- Using a JIS #00 screwdriver, remove the two screws that were revealed when the optical drive was removed.
- Use a Phillips #0 screwdriver to remove all screws that are visible on the bottom.
- There is an oval tab near the center of the laptop, use the flat end of a nylon spudger to wedge it free to reveal another Phillips #0 screw.

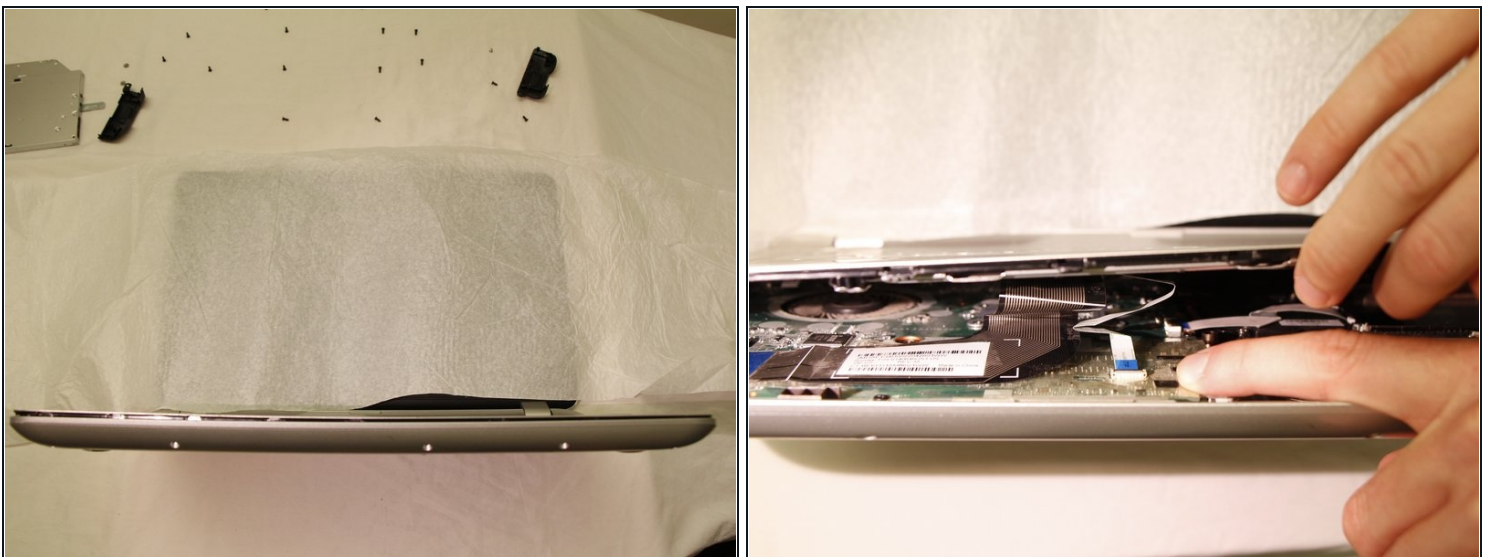


## Step 8



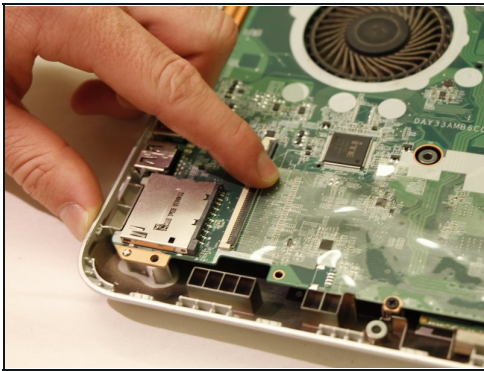
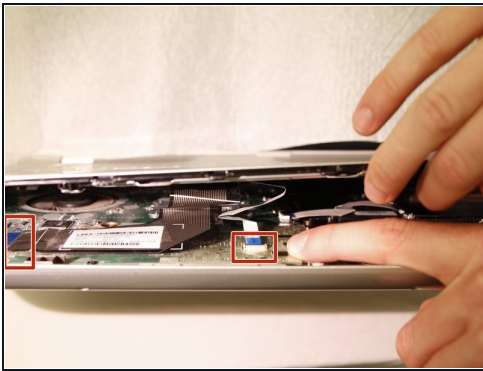
- Open up the laptop and set it down normally.
- Use a credit card or spudger to wedge between the top and bottom keyboard casing.
- Slide the card all the way around the laptop, making sure to pop free all tabs.

## Step 9



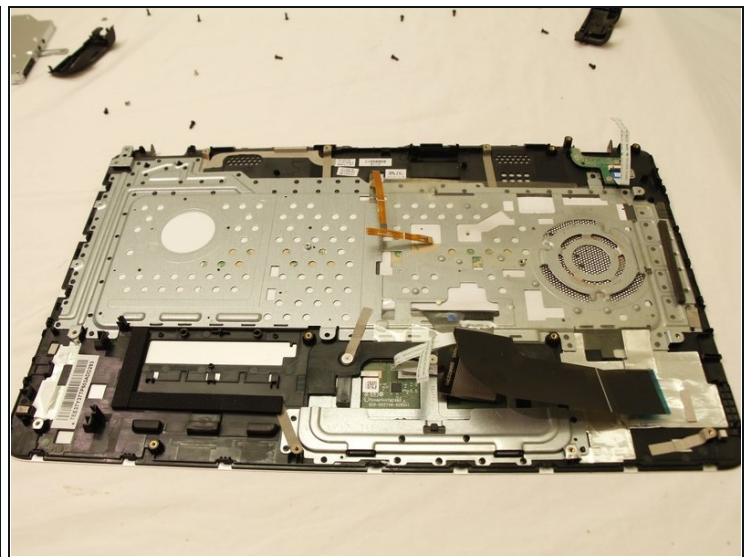
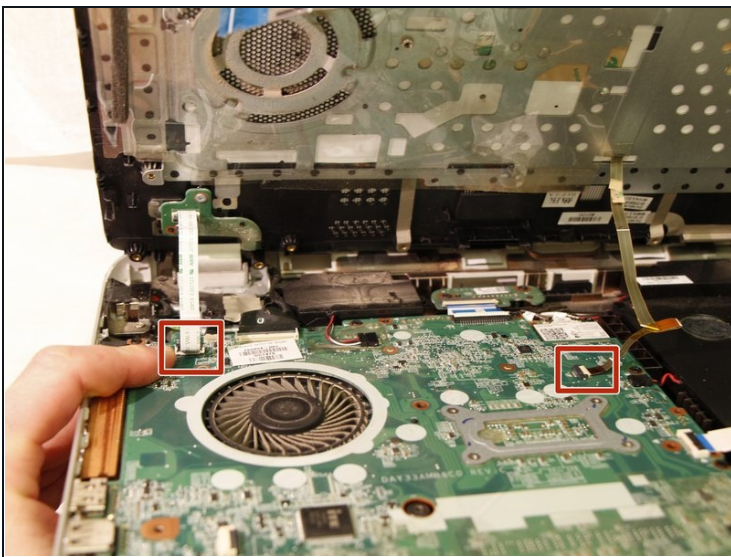
- Place the computer on the backside of the screen, so that the bottom of it is pointing up into the air.
  - ① You may want to place a rag over the screen so that if the front panel touches it while being removed, no damage is caused.
- Carefully begin to separate the top case from the bottom case, as if you are opening it like a book from the edge nearest the touch pad.

## Step 10



- The two panels are connected with 4 flexible electrical ribbon strips. The ribbon strips have a locking tab that will need to be disengaged prior to removal. Using fingers, begin by removing the two strips nearest to the opening.
- Picture 3 shows the tab unlocked

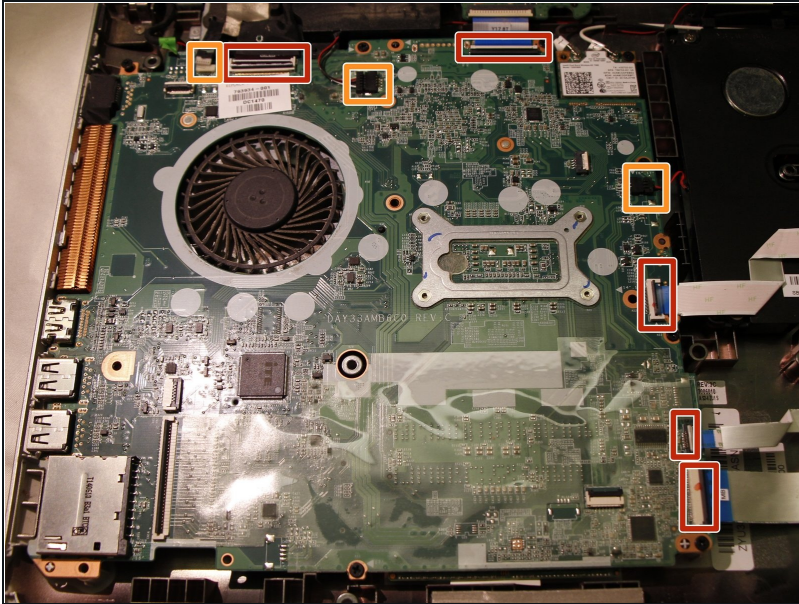
## Step 11



- With the two panels now separated, you can see the other two strips towards the back of the computer. With finger, carefully release each strip from the locking tab.
- Once all are unplugged, carefully remove the top case.

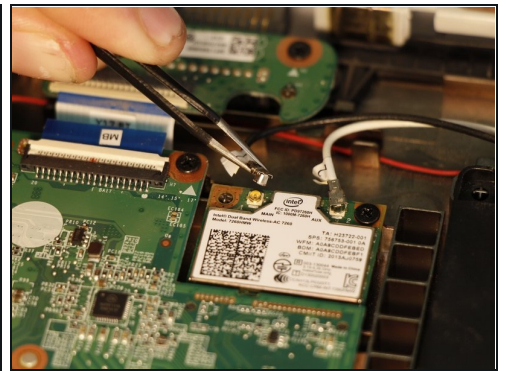
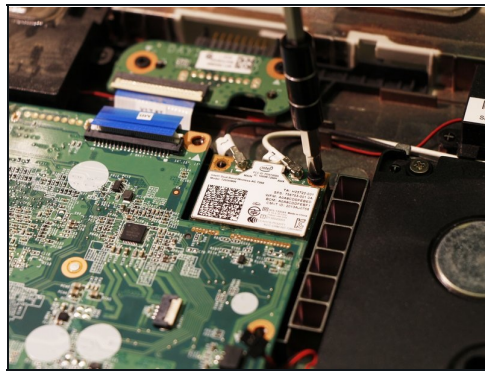
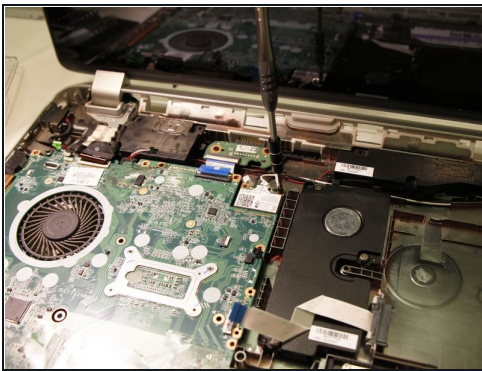


## Step 12 — Motherboard



- There is a series of tabs that hold ribbon strips around the outside of the motherboard. Remove all of the tabs as you did when removing the front panel.
- To disconnect the 3 plugs, use your fingernails or the spudger to pry them free.
- ⓘ Some of these connections may be covered with tape that will need to be removed to gain access to the tab.

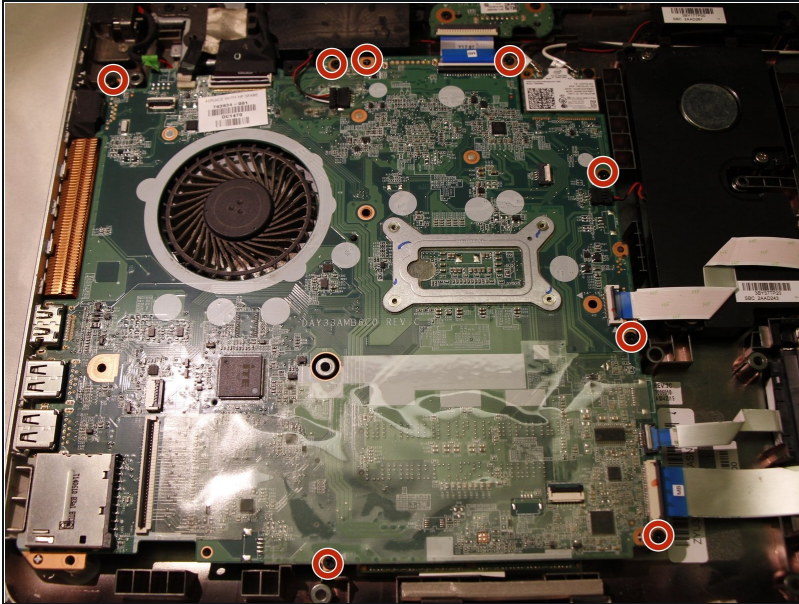
## Step 13



- In the top right of the motherboard is the wireless card, which is separate from the motherboard.
- Remove the one screw on it and unplug the two antennae, then pop it up and pull it out gently.

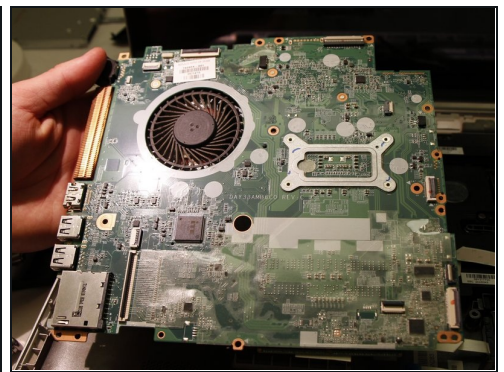
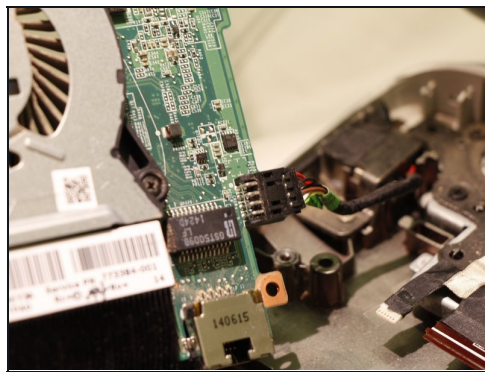
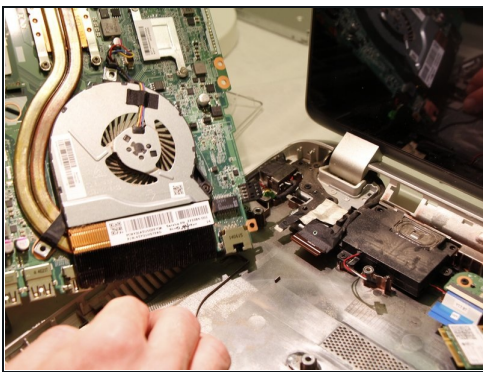


## Step 14



- Remove all screws around the outside of the motherboard.
- Pop the motherboard up, then gently remove it.

## Step 15



- Flip the motherboard over to find the power connection.
- Remove the connection.

To reassemble your device, follow these instructions in reverse order.