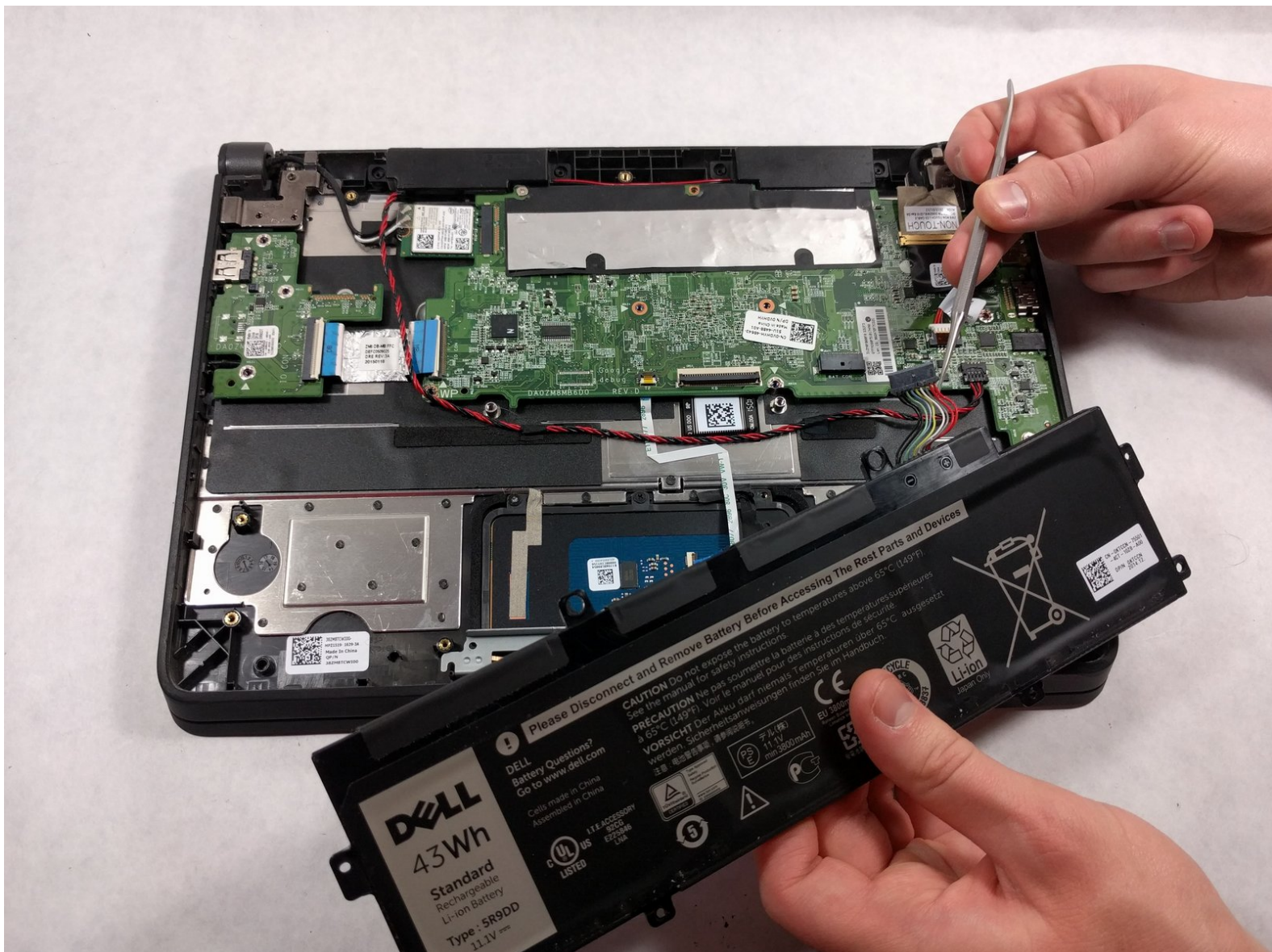




Dell Chromebook 11-3120 Battery Replacement

This guide will demonstrate how to replace the battery in a Dell Chromebook 11-3120.

Written By: Mitchell Stevens



INTRODUCTION

When a laptop's battery becomes old and obsolete it may not be able to hold a charge and will need to be replaced. A new battery allows for a better power supply to important parts to the laptop for optimal usage. When removing the battery, it is important to be careful and use caution. You will need a #J0 Philips Screwdriver for the removal of the battery.



TOOLS:

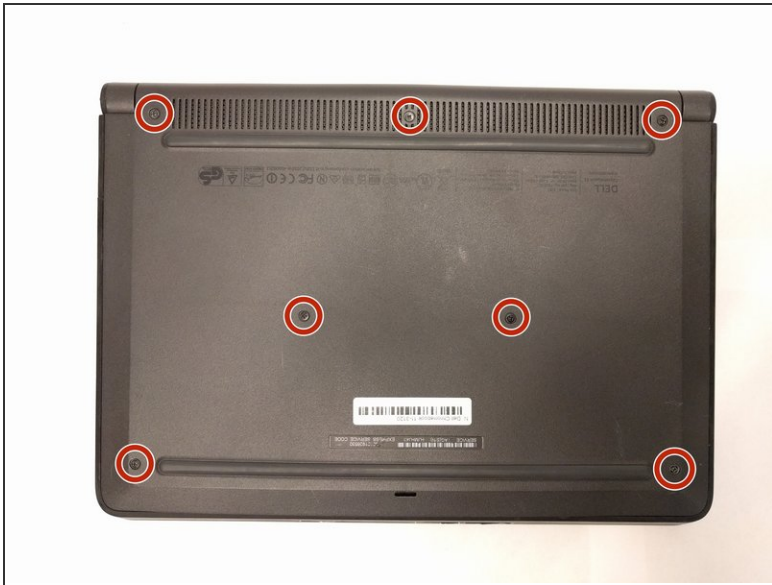
- [JIS #0 Screwdriver](#) (1)
- [iFixit Opening Tools](#) (1)
- [Metal Spudger](#) (1)



PARTS:

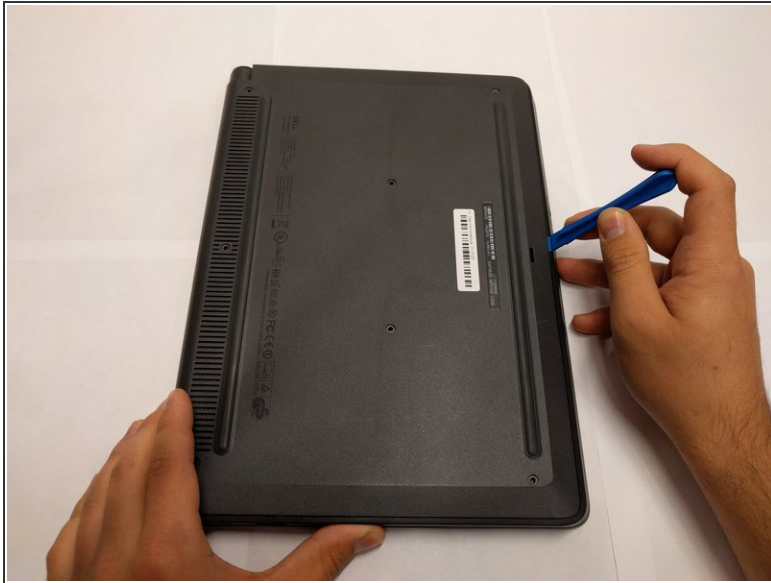
- [Dell Chromebook 11 3120/P22T Battery](#) (1)

Step 1 — Back Panel



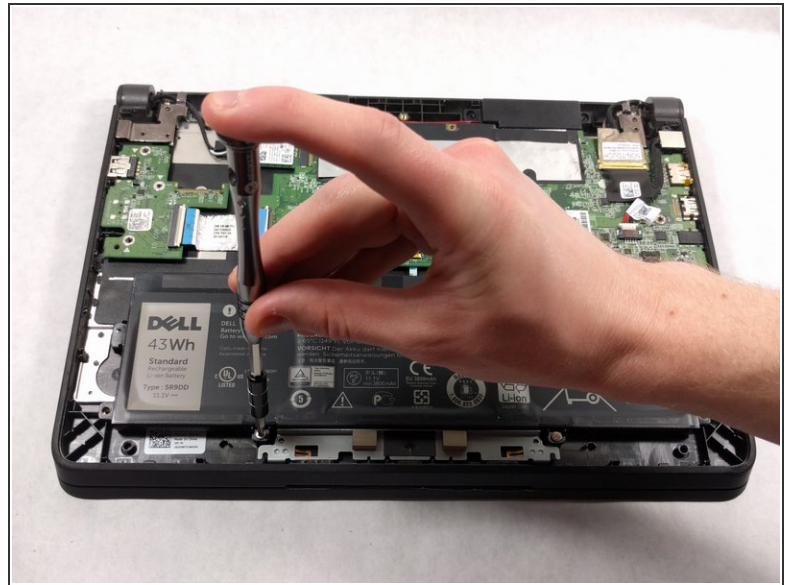
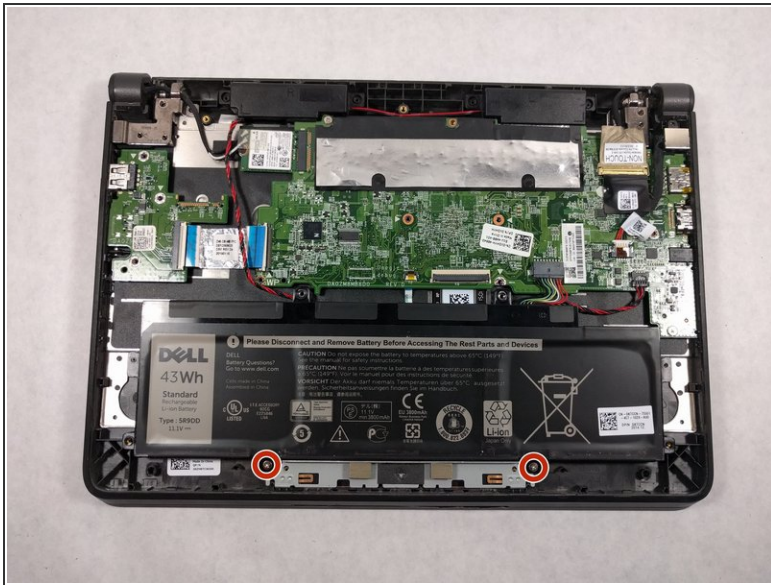
- Use the #J0 screwdriver to unscrew the seven 4mm screws located around the back panel.

Step 2



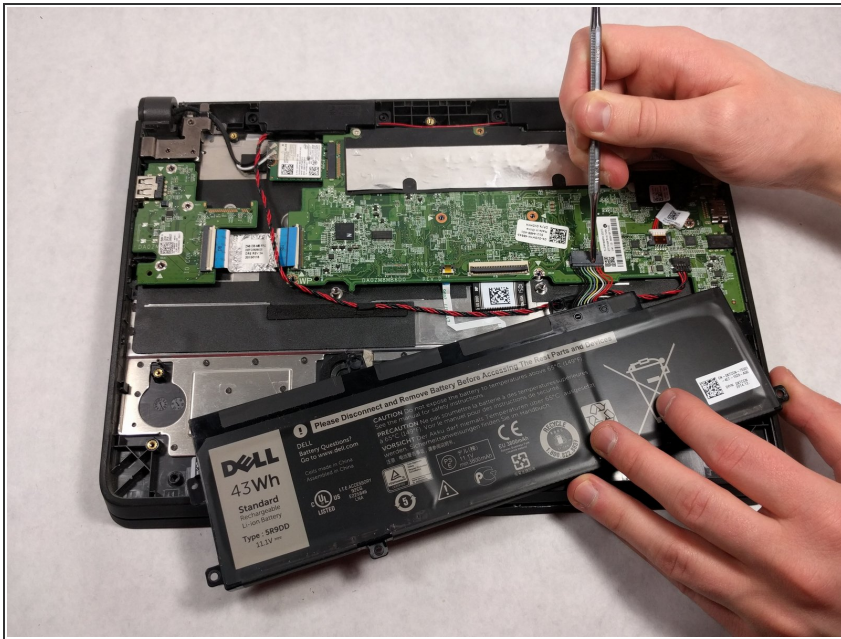
- Use the plastic opening tool to gently pry around the four sides of the back panel until the panel is fully released.
- ⓘ Taking the back cover off of the computer may require more force than expected. When using the opening tool, be careful not to use too much force on it, and make sure all the screws are removed.

Step 3 — Battery



- Using a JIS #0 screwdriver, unscrew the two 4mm screws securing the battery in place.

Step 4



- Using the pointed end of a #2 spudger, remove the connection between the battery and motherboard by slightly pulling on the wires while pushing the tiny hole down using the spudger.
- Pull out the battery from inside the laptop.

To reassemble your device, follow these instructions in reverse order.