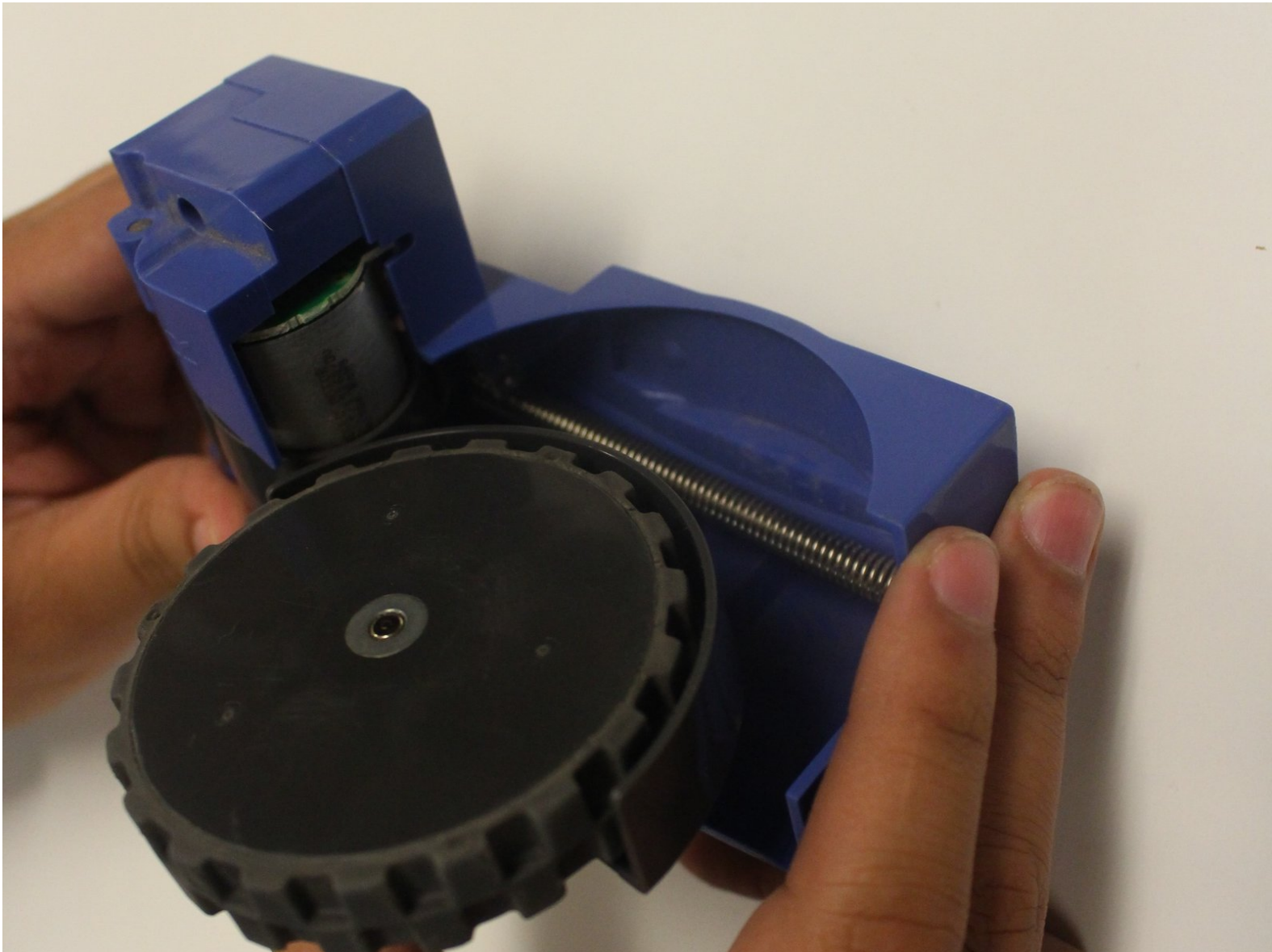




# iRobot Roomba 595 Pet Series Wheel Spring Replacement

Replacement of the spring in one of the wheels for the iRobot Roomba 595 Pet Series

Written By: Dale Shirley-Potopsingh



## INTRODUCTION

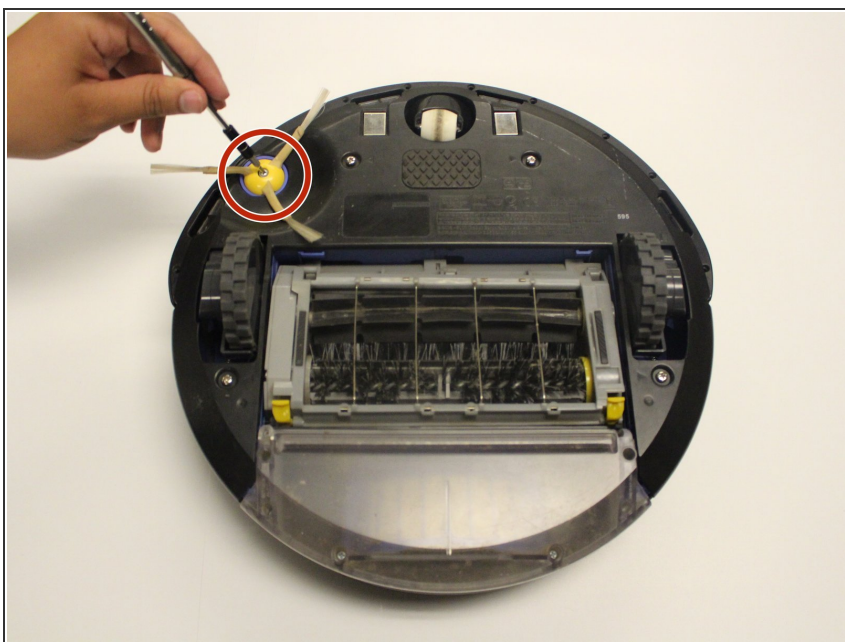
The springs in the wheel are very important to moving the Roomba, if they happen to break or become bad they could get in the way of the movement of the Roomba. This guide is relatively complicated and does require that you take inventory of every screw that is pulled out.



### TOOLS:

- [Phillips #0 Screwdriver](#) (1)
  - [Phillips #1 Screwdriver](#) (1)
-

## Step 1 — Secondary Brush



- Flip the Roomba upside down. Using the Phillips #0 screwdriver, carefully remove the 5 mm screw holding the brush in place.

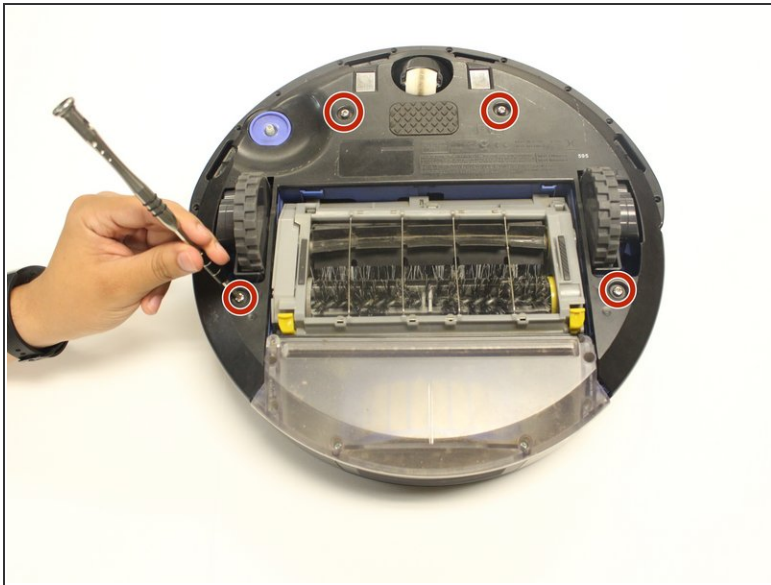
## Step 2



- Gently pull the brush up and remove it from the device.

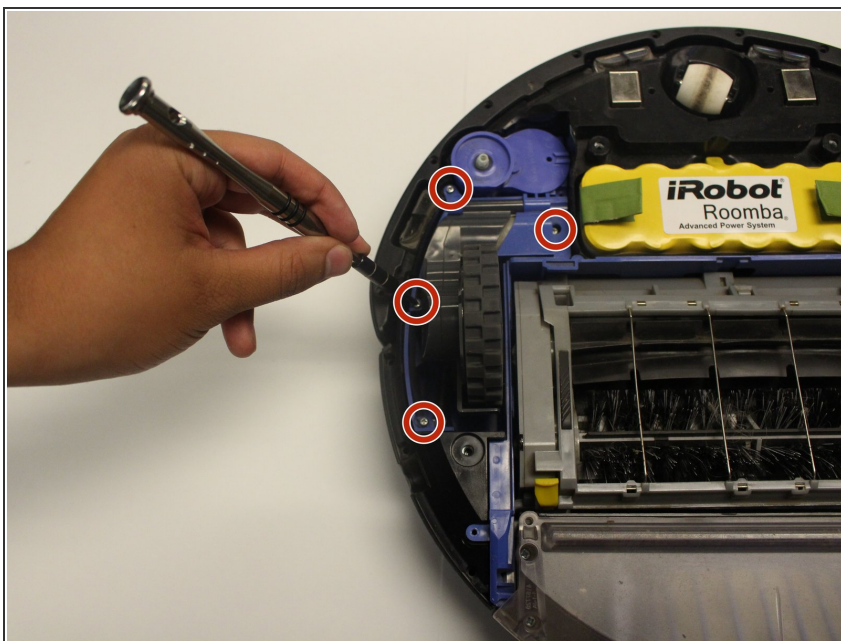


### Step 3 — Wheel Spring



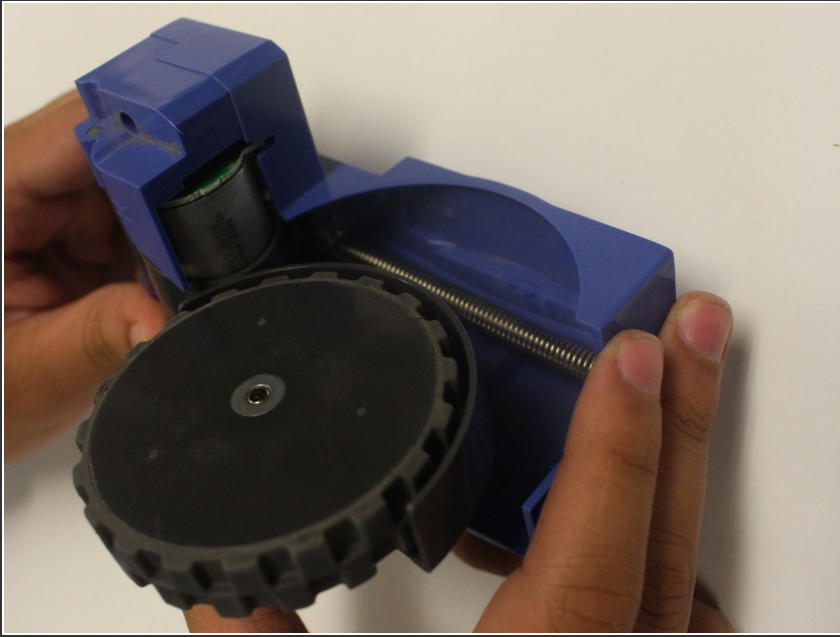
- Unscrew the four 10mm screws on the underside of the Roomba with a Phillips #1 screwdriver.
- Remove the Roomba's external underside.

### Step 4



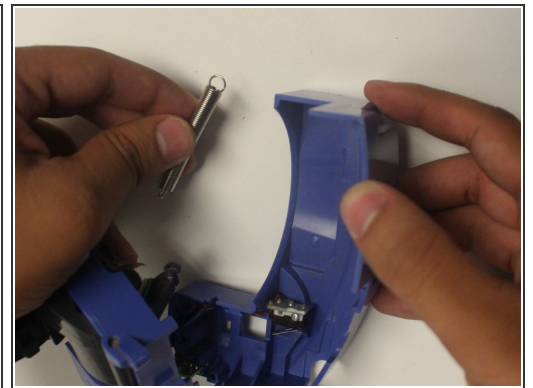
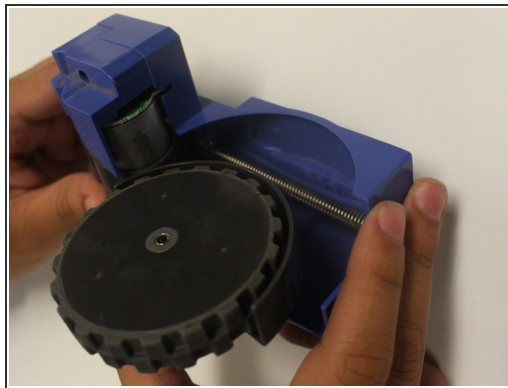
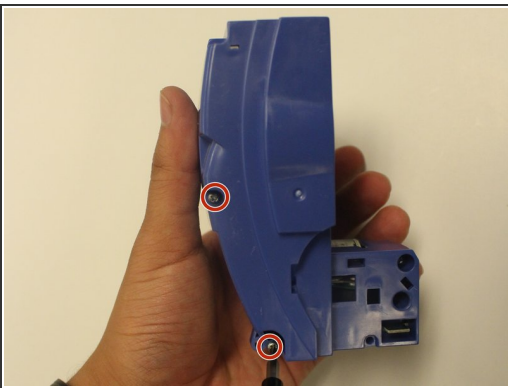
- Remove the 15 mm screws with the Phillips #0 screwdriver bit.

## Step 5



- Once the screws have been taken care of, the wheel component (with the spring inside) can be removed from the main assembly.

## Step 6



- Remove the two 5mm screws in the component and gently twist the casing until the spring is exposed.
- Carefully remove the spring from the component assembly as shown

To reassemble your device, follow these instructions in reverse order.